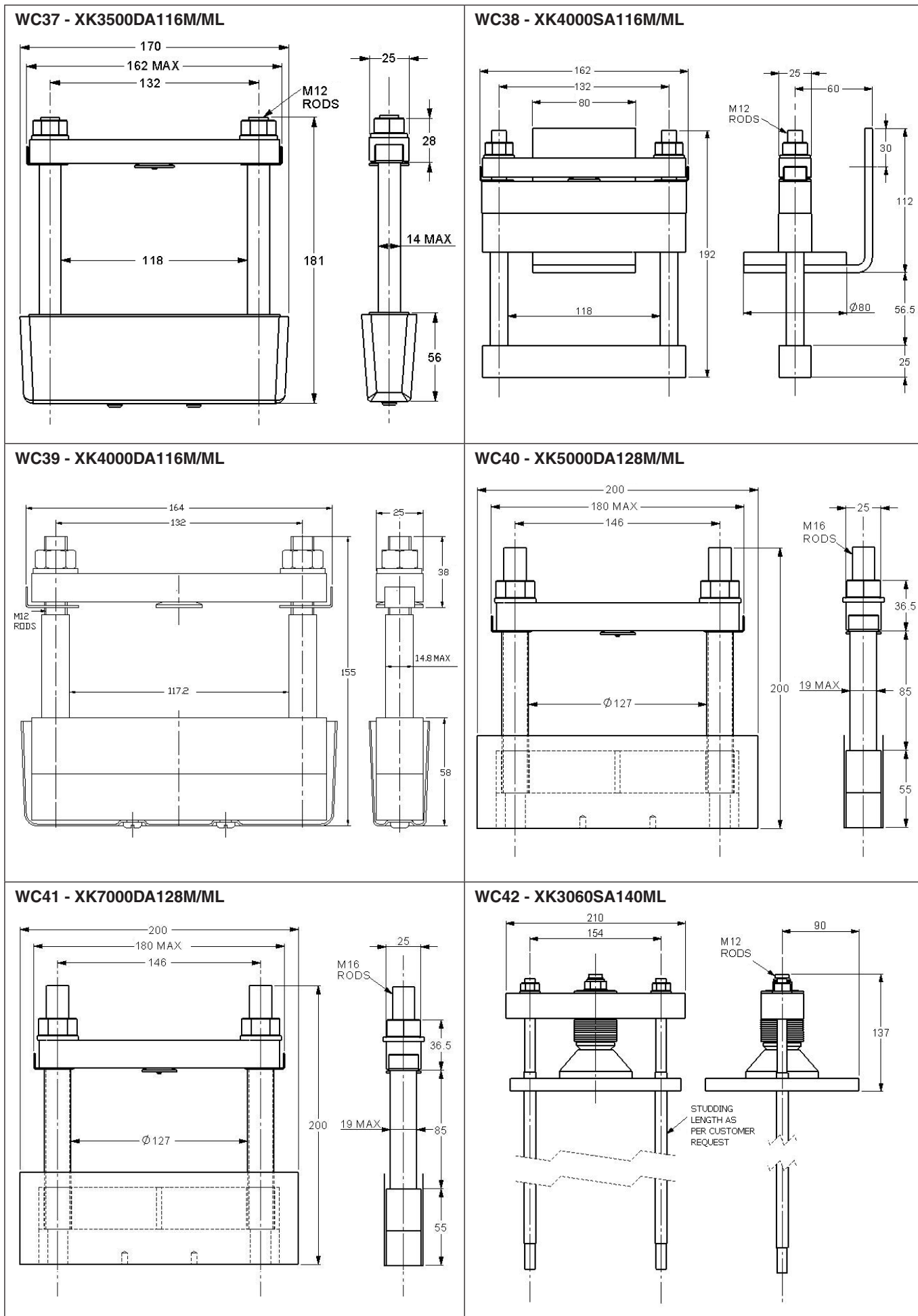


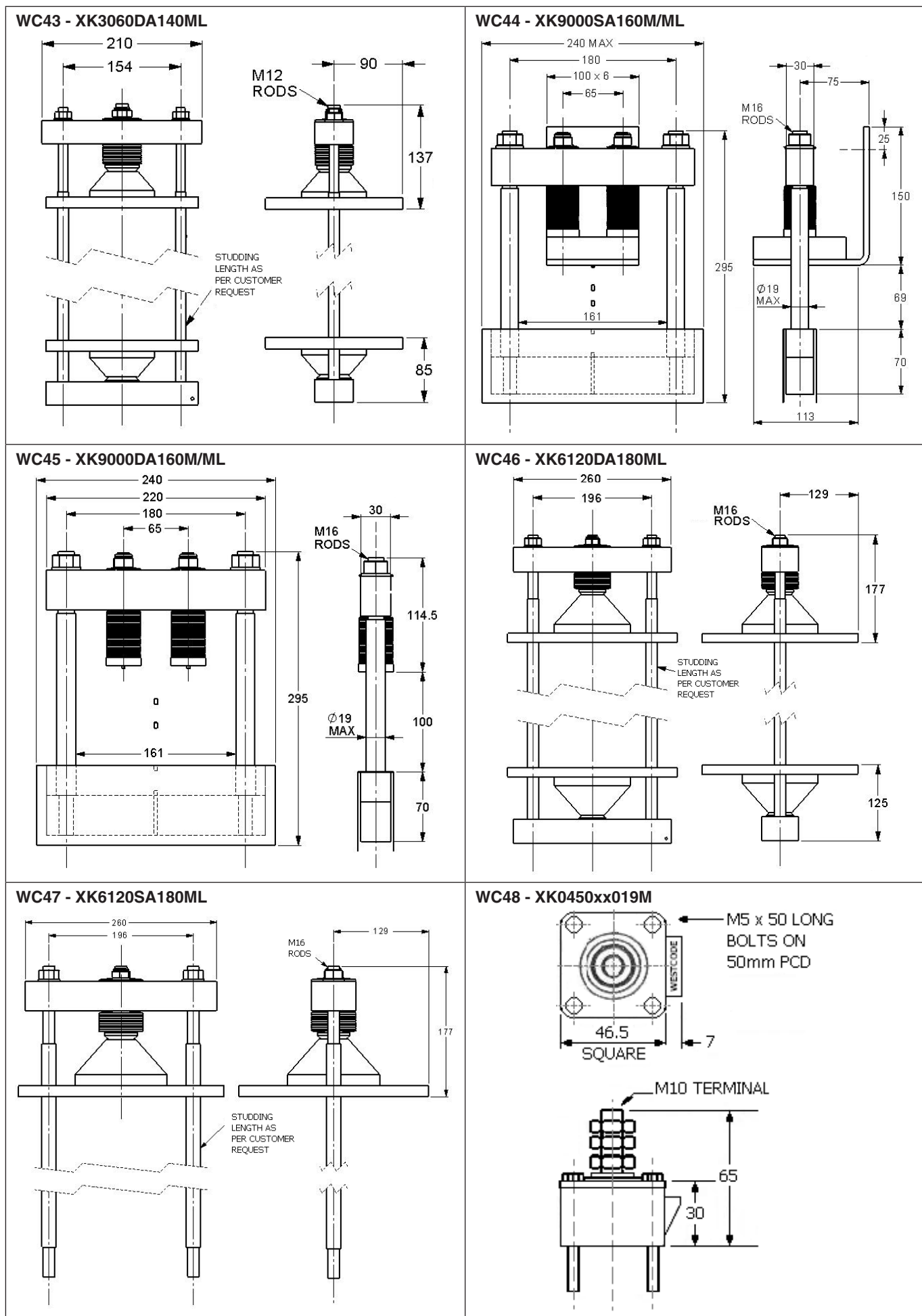
*IXYS Модули igbt, транзисторы, тиристоры, диоды  
тел.факс 8(017)2005646 тел.моб 8(044)7584780 Минск www.foforele.net minsk17@tut.by  
радиодетали электронные компоненты продажа в Минске*



# Outline drawings



Dimensions in mm and inches (1 mm = 0.0394")



# Outline drawings

Dimensions in mm and inches (1 mm = 0.0394")

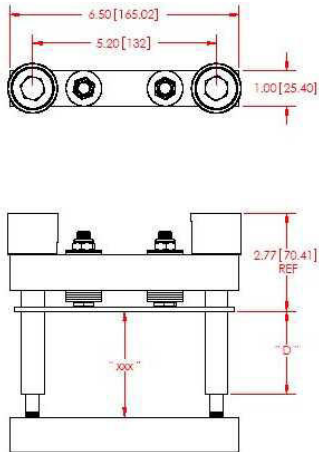
<p><b>WC49 - XK####xx025M</b></p> <p>M5 x 50 LONG BOLTS ON 50mm PCD</p> <p>WESTCODE</p> <p>46.5 SQUARE</p> <p>7</p> <p>M10 TERMINAL</p> <p>65</p> <p>30</p>	<p><b>WC50 - XK1500BA034M</b></p> <p>M8 X 75 LONG BOLTS ON 70mm PCD</p> <p>64.5 SQUARE</p> <p>M8 TERMINAL</p> <p>73</p> <p>60</p>
<p><b>WC51 - XSK1500DA076xxx</b></p> <p>4.44 [112.78]</p> <p>3.50 [89]</p> <p>1.00 [25.40]</p> <p>1.91 [48.48] REF</p> <p>"D"</p> <p>"xxx"</p> <p><b>Notes:</b></p> <p>1. DIMENSIONS IN INCHES [ MILLIMETERS ].</p> <p>2. " Z " DIMENSION CAN BE CHANGED AS PER REQUIREMENT.</p> <p>3. " D " DIMENSION CAN BE CHANGED AS PER REQUIREMENT.</p>	<p><b>WC52 - XSK2000DA076xxx</b></p> <p>4.44 [112.78]</p> <p>3.50 [89]</p> <p>1.00 [25.40]</p> <p>1.97 [50.06] REF</p> <p>"D"</p> <p>"xxx"</p> <p><b>Notes:</b></p> <p>1. DIMENSIONS IN INCHES [ MILLIMETERS ].</p> <p>2. " Z " DIMENSION CAN BE CHANGED AS PER REQUIREMENT.</p> <p>3. " D " DIMENSION CAN BE CHANGED AS PER REQUIREMENT.</p>
<p><b>WC53 - XSK3000DA076xxx</b></p> <p>4.44 [112.78]</p> <p>3.50 [89]</p> <p>1.00 [25.40]</p> <p>2.16 [54.81] REF</p> <p>"D"</p> <p>"xxx"</p> <p><b>Notes:</b></p> <p>1. DIMENSIONS IN INCHES [ MILLIMETERS ].</p> <p>2. " Z " DIMENSION CAN BE CHANGED AS PER REQUIREMENT.</p> <p>3. " D " DIMENSION CAN BE CHANGED AS PER REQUIREMENT.</p>	<p><b>WC54 - XSK3400DA076xxx</b></p> <p>4.44 [112.78]</p> <p>3.50 [89]</p> <p>1.00 [25.40]</p> <p>2.22 [56.39] REF</p> <p>"D"</p> <p>"xxx"</p> <p><b>Notes:</b></p> <p>1. DIMENSIONS IN INCHES [ MILLIMETERS ].</p> <p>2. " Z " DIMENSION CAN BE CHANGED AS PER REQUIREMENT.</p> <p>3. " D " DIMENSION CAN BE CHANGED AS PER REQUIREMENT.</p>

# Outline drawings



Dimensions in mm and inches (1 mm = 0.0394")

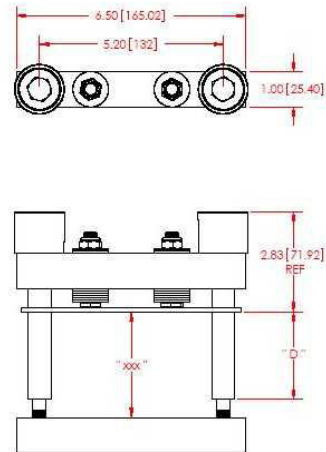
**WC55 - SK3800DA116Mxxx**



**Notes:**

1. DIMENSIONS IN INCHES [ MILLIMETERS ].
2. " Z " DIMENSION CAN BE CHANGED AS PER REQUIREMENT.
3. " D " DIMENSION CAN BE CHANGED AS PER REQUIREMENT.

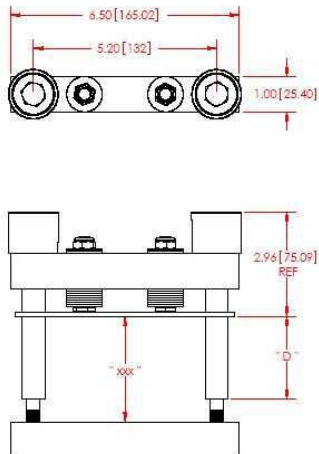
**WC56 - XSK4400DA116Mxxx**



**Notes:**

1. DIMENSIONS IN INCHES [ MILLIMETERS ].
2. " Z " DIMENSION CAN BE CHANGED AS PER REQUIREMENT.
3. " D " DIMENSION CAN BE CHANGED AS PER REQUIREMENT.

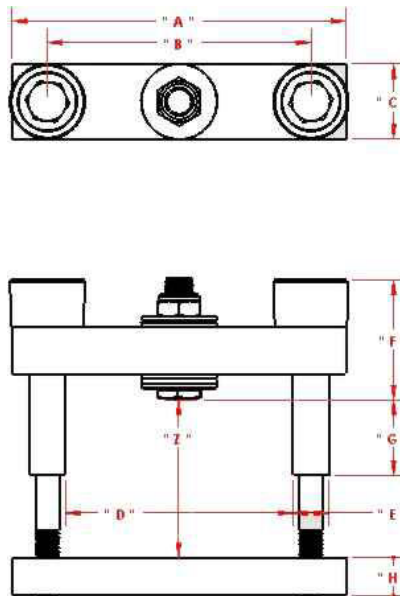
**WC57 - XSK6000DA116Mxxx**



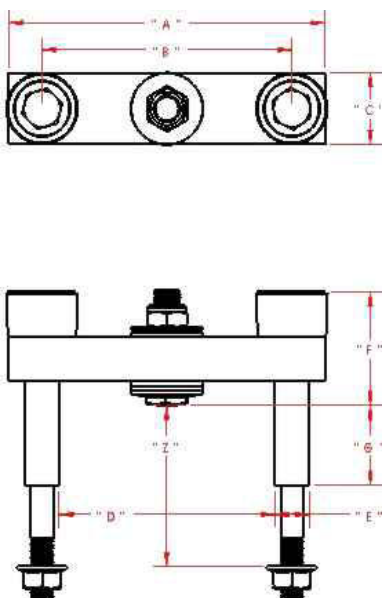
**Notes:**

1. DIMENSIONS IN INCHES [ MILLIMETERS ].
2. " Z " DIMENSION CAN BE CHANGED AS PER REQUIREMENT.
3. " D " DIMENSION CAN BE CHANGED AS PER REQUIREMENT.

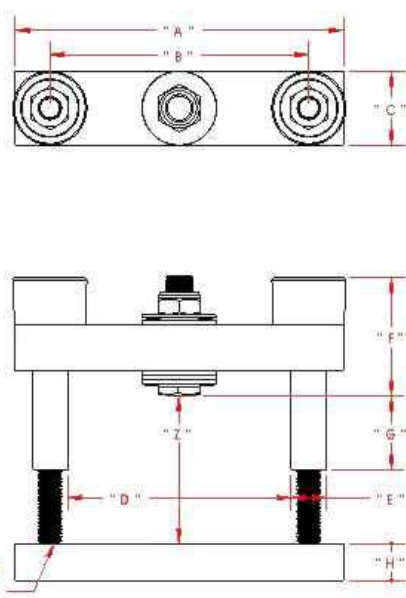
**WC58 - DA**



**WC59 - DT**



**WC60 - DF**



# Outline drawings

Dimensions in mm and inches (1 mm = 0.0394")

<p><b>WC61 - DA</b></p>	<p><b>WC62 - DT</b></p>
<p><b>WC63 - DF</b></p> <p>RODS LOCATE INTO THE BOTTOM BAR (ALL THE WAY)</p>	<p><b>WC64 - XK1500CB034M</b></p> <p>4 OFF Ø9 THRO' HOLES CORE Ø16 X 9.5MM DEEP FOR MOUNTING</p> <p>Ø8 X 16MM DEEP CONNECTION HOLE</p>
<p><b>WC65 - XK1130SB076M</b></p> <p>4 OFF Ø9 THRO' HOLES CORE Ø18 X 6MM DEEP FOR MOUNTING</p> <p>2 OFF Ø8.5 CONNECTION HOLES</p>	<p><b>WC66 - XK2140SB076M</b></p> <p>4 OFF Ø9 THRO' HOLES CORE Ø18 X 6MM DEEP FOR MOUNTING</p> <p>2 OFF Ø8.5 CONNECTION HOLES</p>

# Outline drawings



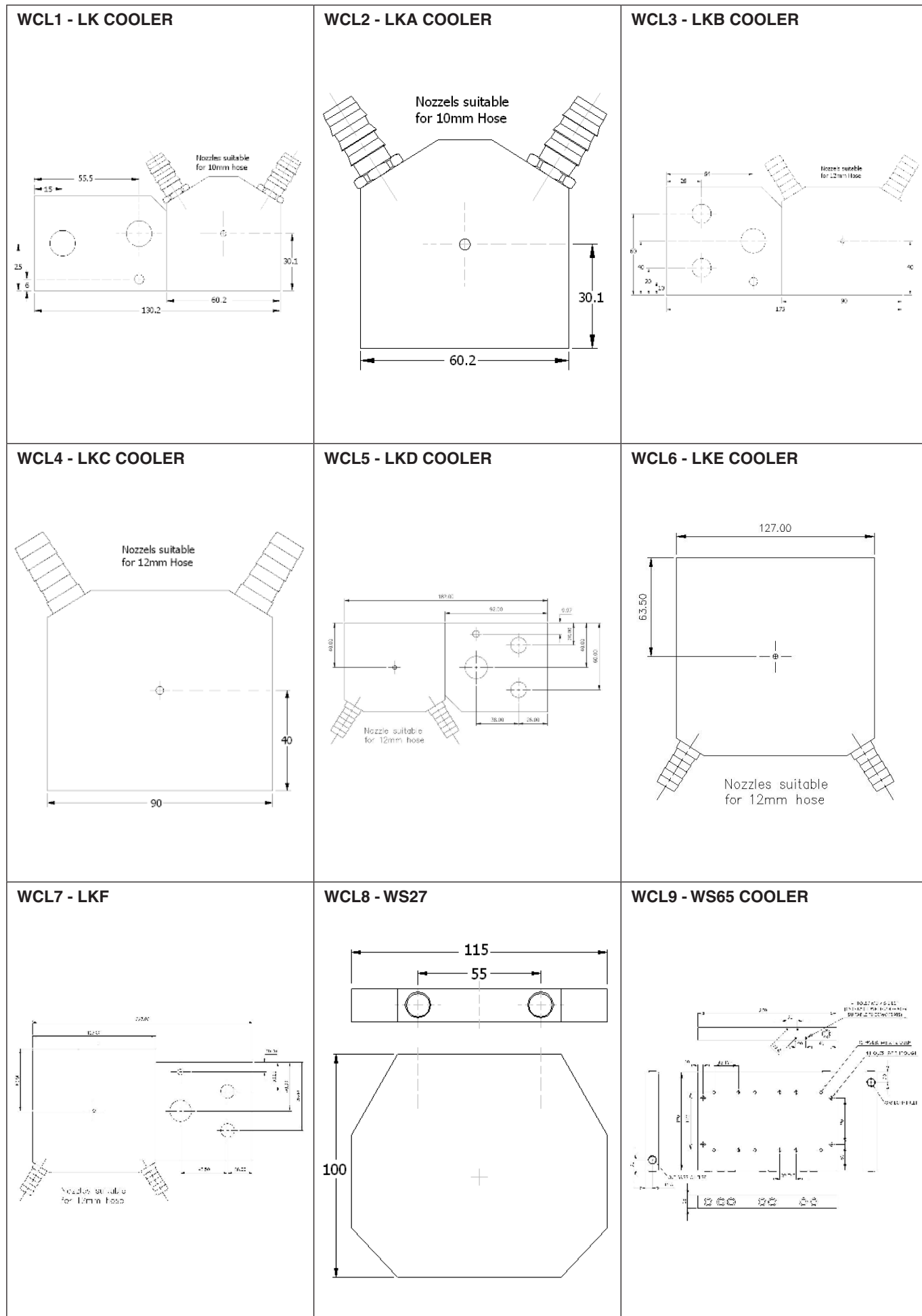
Dimensions in mm and inches (1 mm = 0.0394")

<p><b>WH1 - G FIN</b></p> <p>Dimensions: 68, 50, 44, 90</p>	<p><b>WH2 - GA FIN</b></p> <p>Dimensions: 100, 72, 64, 120</p>	<p><b>WH3 - H FIN</b></p> <p>Dimensions: 64, 79, 10, 27, 142, 178</p>
<p><b>WH4 - T FIN</b></p> <p>Dimensions: 175, 132, 78, 38, 26, 145</p>	<p><b>WH5 - TB FIN</b></p> <p>Dimensions: 146, 11, 5, 20, 240, 240</p>	<p><b>WH6 - TC FIN</b></p> <p>Dimensions: 110, 10, 120, 23, 47, 200, 222</p>
<p><b>WH7 - LP100</b></p> <p>Dimensions: 222, 20, 100, 3, 2</p>	<p><b>WH8 - WS46</b></p> <p>Dimensions: 270, 210, 60.5, 49.5, 38</p>	<p><b>WH9 - WS30 - COPPER</b></p> <p>Dimensions: 93, 175, 125, 89, 125, 19</p>

# Outline drawings



Dimensions in mm and inches (1 mm = 0.0394")











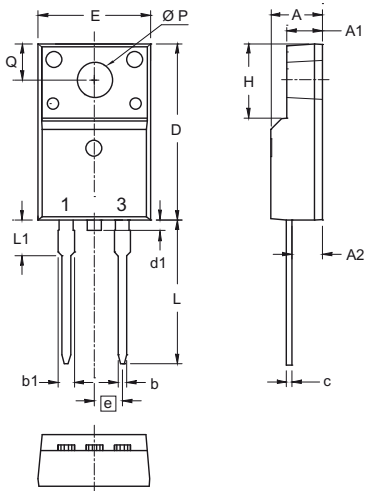
# Outline drawings



Dimensions in mm and inches (1 mm = 0.0394")

**X007b TO-220 ACFP**

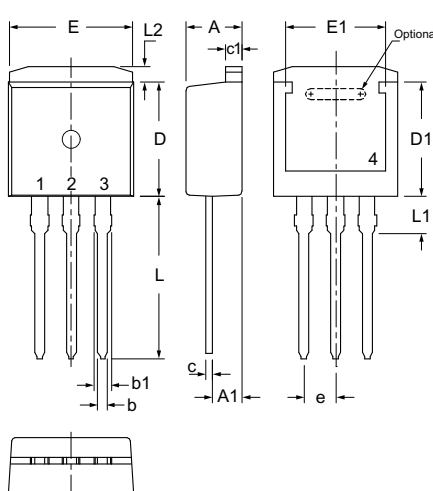
Weight = 2 g



Dim.	Millimeters		Inches	
	min	max	min	max
A	4.50	4.90	0.177	0.193
A1	2.34	2.74	0.092	0.108
A2	2.56	2.96	0.101	0.117
b	0.70	0.90	0.028	0.035
b1	1.27	1.47	0.050	0.058
c	0.45	0.60	0.018	0.024
D	15.67	16.07	0.617	0.633
d1	0.00	1.10	0.000	0.043
E	9.96	10.36	0.392	0.408
e	2.54 BSC		0.100 BSC	
H	6.48	6.88	0.255	0.271
L	12.68	13.28	0.499	0.523
L1	3.03	3.43	0.119	0.135
Ø P	3.08	3.28	0.121	0.129
Q	3.20	3.40	0.126	0.134

**X008a TO-262 I<sup>2</sup>PAK**

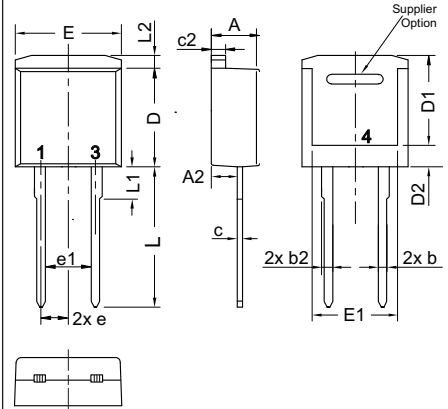
Weight = 1.5 g



Dim.	Millimeters		Inches	
	min	max	min	max
A	4.30	4.70	0.169	0.185
A1	2.20	2.60	0.087	0.102
b	0.70	0.90	0.028	0.035
b1	1.37	1.57	0.054	0.062
c	0.45	0.60	0.018	0.024
c1	1.25	1.40	0.049	0.055
D	9.00	9.40	0.355	0.370
D1	7.20		0.284	
E	9.70	9.90	0.382	0.390
E1	7.00		0.276	
e	2.54 BSC		0.100 BSC	
L	12.88	13.28	0.507	0.523
L1	3.00	-	0.118	-
L2	1.00	1.40	0.039	0.055

**X008b TO-262 I<sup>2</sup>PAK**

Weight = 1.5 g



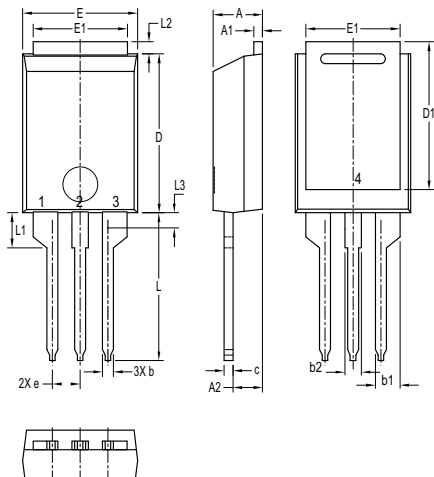
Dim.	Millimeters		Inches	
	min	max	min	max
A	4.06	4.83	0.160	0.190
A2	2.41		0.095	
b	0.51	0.99	0.020	0.039
b2	1.14	1.40	0.045	0.055
c	0.40	0.74	0.016	0.029
c2	1.14	1.40	0.045	0.055
D	8.38	9.40	0.330	0.370
D1	8.00	8.89	0.315	0.350
D2	2.5		0.098	
E	9.65	10.41	0.380	0.410
E1	6.22	8.50	0.245	0.335
e	2.54 BSC		0.100 BSC	
e1	4.28		0.169	
L	13.00	13.60	0.512	0.535
L1	2.90	3.10	0.114	0.122
L2	1.02	1.68	0.040	0.066

All dimensions conform with and/or within JEDEC standard

**X009a PLUS220™**

Weight = 2.5 g

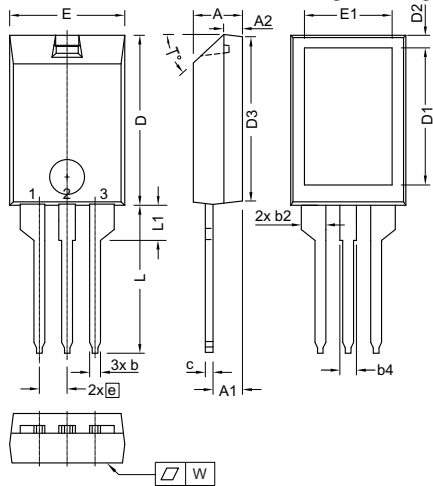
b) middle leg cut



Dim.	Millimeters		Inches	
	min	max	min	max
A	4.30	4.70	0.169	0.185
A1	0.70	0.90	0.028	0.035
A2	2.50	3.00	0.098	0.118
b	0.90	1.20	0.035	0.047
b1	2.03	2.41	0.080	0.095
b2	1.37	1.63	0.054	0.064
c	0.70	0.90	0.028	0.035
D	14.00	15.00	0.551	0.591
D1	13.00	13.70	0.512	0.539
E	10.00	11.00	0.394	0.433
E1	8.40	8.80	0.331	0.346
e	2.54 BSC		0.100 BSC	
L	13.00	14.00	0.512	0.551
L1	3.00	3.50	0.118	0.138
L2	0.90	1.30	0.035	0.051
L3	1.20	1.50	0.047	0.059

**X010a ISOPLUS220™ AB**

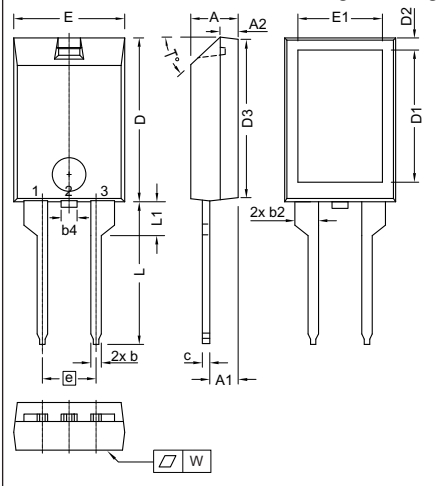
Weight = 2.5 g



Dim.	Millimeters		Inches	
	min	max	min	max
A	4.00	5.00	0.157	0.197
A1	2.50	3.00	0.098	0.118
A2	1.60	1.80	0.063	0.071
b	0.90	1.30	0.035	0.051
b2	2.35	2.55	0.093	0.100
b4	1.25	1.65	0.049	0.065
c	0.70	1.00	0.028	0.039
D	15.00	16.00	0.591	0.630
D1	12.00	13.00	0.472	0.512
D2	1.10	1.50	0.043	0.059
D3	14.90	15.50	0.587	0.610
E	10.00	11.00	0.394	0.433
E1	7.50	8.50	0.295	0.335
e	2.54 BSC		0.100 BSC	
L	13.00	14.50	0.512	0.571
L1	3.00	3.50	0.118	0.138
T°	42.5	47.5	-	-
W	-	0.10	-	0.004

**X010b ISOPLUS220™ AC**

Weight = 2.5 g



Dim.	Millimeters		Inches	
	min	max	min	max
A	4.00	5.00	0.157	0.197
A1	2.50	3.00	0.098	0.118
A2	1.60	1.80	0.063	0.071
b	0.90	1.30	0.035	0.051
b2	1.25	1.65	0.049	0.065
b4	2.35	2.55	0.093	0.100
c	0.70	1.00	0.028	0.039
D	15.00	16.00	0.591	0.630
D1	12.00	13.00	0.472	0.512
D2	1.10	1.50	0.043	0.059
D3	14.90	15.50	0.587	0.610
E	10.00	11.00	0.394	0.433
E1	7.50	8.50	0.295	0.335
e	5.08 BSC		0.200 BSC	
L	13.00	14.50	0.512	0.571
L1	3.00	3.50	0.118	0.138
T°	42.5	47.5	-	-
W	-	0.10	-	0.004

# Outline drawings

Dimensions in mm and inches (1 mm = 0.0394")

**X011a TO-263 AA (D<sup>2</sup>PAK)** Weight = 1.5 g

Dim.	Millimeter		Inches	
	min	max	min	max
A	4.06	4.83	0.160	0.190
A1	typ. 0.10		typ. 0.004	
b	0.51	0.99	0.020	0.039
b2	1.14	1.40	0.045	0.055
c	0.40	0.74	0.016	0.029
c2	1.14	1.40	0.045	0.055
D	8.38	9.40	0.330	0.370
D1	8.00	8.89	0.315	0.350
E	9.65	10.41	0.380	0.410
E1	6.22	8.13	0.245	0.320
e	2,54 BSC		0,100 BSC	
H	14.61	15.88	0.575	0.625
L	1.78	2.79	0.070	0.110
L1	1.02	1.68	0.040	0.066
W	typ. 0.02	0.040	typ. 0.0008	0.002

**X011b TO-263 AB (D<sup>2</sup>PAK)** Weight = 1.5 g

Dim.	Millimeter		Inches	
	min	max	min	max
A	4.06	4.83	0.160	0.190
A1	typ. 0.10		typ. 0.004	
b	0.51	0.99	0.020	0.039
b2	1.14	1.40	0.045	0.055
c	0.40	0.74	0.016	0.029
c2	1.14	1.40	0.045	0.055
D	8.38	9.40	0.330	0.370
D1	8.00	8.89	0.315	0.350
E	9.65	10.41	0.380	0.410
E1	6.22	8.13	0.245	0.320
e	2,54 BSC		0,100 BSC	
H	14.61	15.88	0.575	0.625
L	1.78	2.79	0.070	0.110
L1	1.02	1.68	0.040	0.066
W	typ. 0.02	0.040	typ. 0.0008	0.002

**X011c TO-263 AB (D<sup>2</sup>PAK)** Weight = ?? g

Dim.	Millimeters		Inches	
	min	max	min	max
A	4.06	4.83	0.160	0.190
A1	typ 0.10		typ 0.004	
A2	2.41		0.095	
b	0.51	0.99	0.020	0.039
b2	1.14	1.40	0.045	0.055
c	0.40	0.74	0.016	0.029
c2	1.14	1.40	0.045	0.055
D	8.38	9.40	0.330	0.370
D1	8.00	8.89	0.315	0.350
D2	2.5		0.098	
E	9.65	10.41	0.380	0.410
E1	6.22	8.50	0.245	0.335
e	2.54 BSC		0.100 BSC	
e1	4.28		0.169	
H	14.61	15.88	0.575	0.625
L	1.78	2.79	0.070	0.110
L2	1.02	1.68	0.040	0.066
W	typ 0.02	0.040	typ 0.0008	0.002

All dimensions conform with and/or within JEDEC standard

**X012a TO-263 (5)** Weight = 1.5 g

Dim.	Millimeter		Inches	
	min	max	min	max
A	4.20	4.80	0.160	0.190
A1	2.10	2.70	0.083	0.106
b	0.60	0.99	0.024	0.039
c	0.40	0.70	0.016	0.028
c2	1.20	1.40	0.047	0.055
D	8.80	9.50	0.346	0.374
D1	6.60	7.20	0.260	0.283
E	9.65	10.30	0.380	0.406
E1	7.50	8.20	0.295	0.323
e	1.70 BSC		0.067 BSC	
L	14.80	15.80	0.583	0.622
L1	2.24	2.84	0.088	0.112
L2	1.00	1.40	0.039	0.067
L3	1.20	1.70	0.047	0.067

**X012b TO-263 (7) c) middle leg cut** Weight = 2.5 g

Dim.	Millimeter		Inches	
	min	max	min	max
A	4.20	4.60	0.165	0.181
A1	2.45	2.75	0.096	0.108
b	0.65	0.90	0.026	0.035
c	0.40	0.60	0.016	0.024
c2	1.14	1.40	0.045	0.055
D	8.38	8.64	0.330	0.340
D1	6.10	6.35	0.240	0.250
E	10.00	10.30	0.394	0.406
E1	7.34	8.00	0.290	0.315
e	1.27 BSC		0.050 BSC	
L	14.73	15.75	0.580	0.620
L1	2.24	2.84	0.088	0.112
L2	1.35	1.55	0.053	0.061

**X013 PLUS220™ (SMD)** Weight = 2 g

Dim.	Millimeter		Inches	
	min	max	min	max
A	4.30	4.70	0.169	0.185
A1	0.70	0.90	0.028	0.035
A2	2.50	3.00	0.098	0.118
A3	0.00	0.25	0.000	0.010
b	0.90	1.20	0.035	0.047
b1	2.03	2.41	0.080	0.095
b2	1.37	1.63	0.054	0.064
c	0.70	0.90	0.028	0.035
D	14.00	15.00	0.551	0.591
D1	13.00	13.70	0.512	0.539
E	10.00	11.00	0.394	0.433
E1	8.40	8.80	0.331	0.346
e	5.08 BSC		0.200 BSC	
L	5.30	5.80	0.209	0.228
L1	3.00	3.50	0.118	0.138
L2	0.90	1.30	0.035	0.051
L3	1.20	1.50	0.047	0.059
L4	1.00	1.50	0.039	0.059

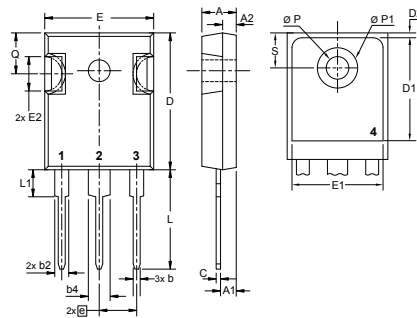
# Outline drawings



X014c

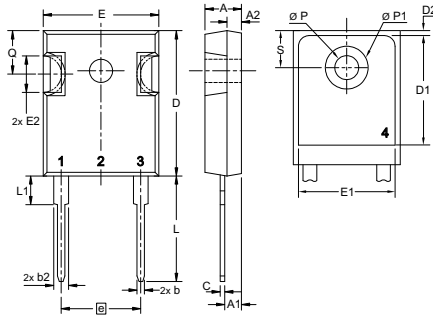
Dimensions in mm and inches (1 mm = 0.0394")

**X014a TO-247 AD** Weight = 6 g



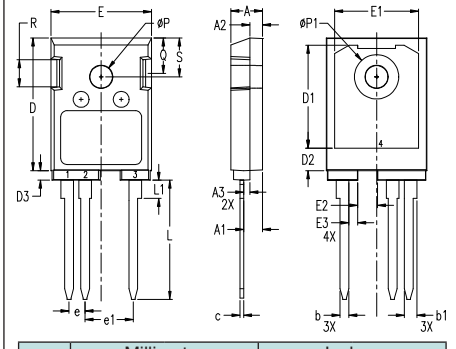
Dim.	Millimeter		Inches	
	min	max	min	max
A	4.70	5.30	0.185	0.209
A1	2.21	2.59	0.087	0.102
A2	1.50	2.49	0.059	0.098
b	0.99	1.40	0.039	0.055
b2	1.65	2.39	0.065	0.094
b4	2.59	3.43	0.102	0.135
c	0.38	0.89	0.015	0.035
D	20.79	21.45	0.819	0.845
D1	13.07	-	0.515	-
D2	0.51	1.35	0.020	0.053
E	15.48	16.24	0.610	0.640
E1	13.45	-	0.53	-
E2	4.31	5.48	0.170	0.216
e	5.45 BSC		0.215 BSC	
L	19.80	20.30	0.078	0.800
L1	-	4.49	-	0.177
Ø P	3.55	3.65	0.140	0.144
Ø P1	-	7.39	-	0.290
Q	5.38	6.19	0.212	0.244
S	6.14 BSC		0.242 BSC	

**X014b TO-247 AD** Weight = 6 g



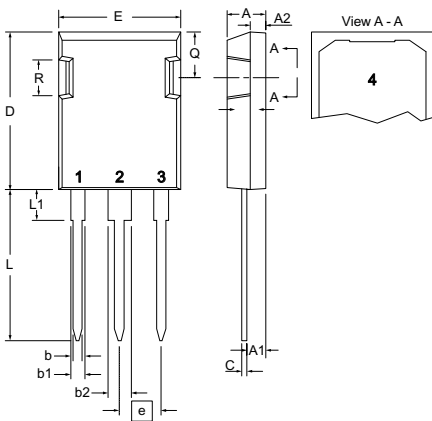
Dim.	Millimeter		Inches	
	min	max	min	max
A	4.70	5.30	0.185	0.209
A1	2.21	2.59	0.087	0.102
A2	1.50	2.49	0.059	0.098
b	0.99	1.40	0.039	0.055
b2	1.65	2.39	0.065	0.094
b4	2.59	3.43	0.102	0.135
c	0.38	0.89	0.015	0.035
D	20.79	21.45	0.819	0.845
D1	13.07	-	0.515	-
D2	0.51	1.35	0.020	0.053
E	15.48	16.24	0.610	0.640
E1	13.45	-	0.530	-
E2	4.31	5.48	0.170	0.216
e	10.90 BSC		0.430 BSC	
L	19.80	20.30	0.078	0.800
L1	-	4.49	-	0.177
Ø P	3.55	3.65	0.140	0.144
Ø P1	-	7.39	-	0.290
Q	5.38	6.19	0.212	0.244
S	6.14 BSC		0.242 BSC	

**X014c TO-247 AD** Weight = 6 g



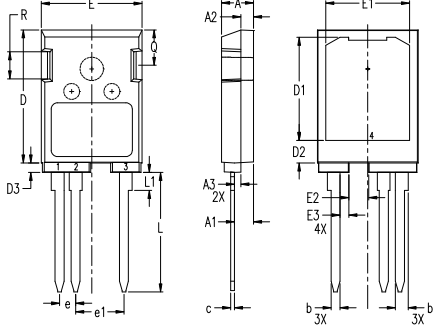
Dim.	Millimeter		Inches	
	min	max	min	max
A	4.90	5.10	0.193	0.201
A1	2.90	3.10	0.114	0.122
A2	1.90	2.10	0.075	0.083
A3	0.90	1.10	0.035	0.043
b	1.35	1.50	0.053	0.059
b1	1.90	2.10	0.075	0.083
c	0.55	0.75	0.022	0.030
D	20.80	21.40	0.819	0.843
D1	16.20	16.40	0.638	0.646
D2	3.40	3.70	0.134	0.146
D3	1.40	1.60	0.055	0.063
E	15.80	16.20	0.622	0.638
E1	13.20	13.40	0.520	0.528
E2	3.00	3.20	0.118	0.126
E3	1.30	1.50	0.051	0.059
e	2.54 BSC		0.100 BSC	
e1	7.62 BSC		0.300 BSC	
L	18.60	19.00	0.732	0.748
L1	2.70	3.00	0.106	0.118
Ø P	3.50	3.60	0.138	0.142
Ø P1	6.90	7.10	0.272	0.280
Q	5.50	5.70	0.216	0.224
R	4.20	4.30	0.165	0.169
S	6.10	6.30	0.240	0.248

**X015a PLUS247™** Weight = 7 g



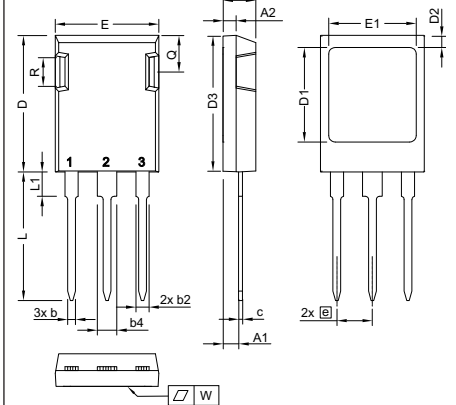
Dim.	Millimeter		Inches	
	min	max	min	max
A	4.83	5.21	0.190	0.205
A1	2.29	2.54	0.090	0.100
A2	1.91	2.16	0.075	0.085
b	1.14	1.40	0.045	0.055
b1	1.90	2.10	0.075	0.084
b2	2.92	3.12	0.115	0.123
C	0.60	0.80	0.024	0.031
D	20.80	21.34	0.819	0.840
E	15.75	16.13	0.620	0.635
e	5.45 BSC		0.215 BSC	
L	19.80	20.30	0.078	0.800
L1	3.80	4.30	0.150	0.170
Q	5.60	6.20	0.220	0.244
R	4.32	4.83	0.170	0.190

**X015c PLUS247™** Weight = 7 g



Dim.	Millimeter		Inches	
	min	max	min	max
A	4.90	5.10	0.193	0.201
A1	2.90	3.10	0.114	0.122
A2	1.90	2.10	0.075	0.083
A3	0.90	1.10	0.035	0.043
b	1.35	1.50	0.053	0.059
b1	1.90	2.10	0.075	0.083
c	0.55	0.75	0.022	0.030
D	20.80	21.40	0.819	0.843
D1	16.20	16.40	0.638	0.646
D2	3.40	3.70	0.134	0.146
D3	1.40	1.60	0.055	0.063
E	15.80	16.20	0.622	0.638
E1	13.20	13.40	0.520	0.528
E2	3.00	3.20	0.118	0.126
E3	1.30	1.50	0.051	0.059
e	2.54 BSC		0.100 BSC	
e1	7.62 BSC		0.300 BSC	
L	18.60	19.00	0.732	0.748
L1	2.70	3.00	0.106	0.118
Q	5.50	5.70	0.216	0.224
R	4.20	4.30	0.165	0.169

**X016a ISOPLUS247™** Weight = 4.5 g

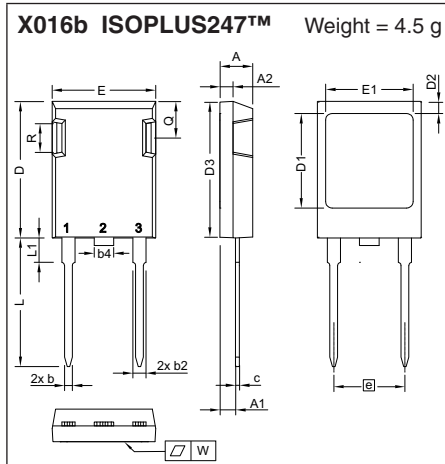


Dim.	Millimeter		Inches	
	min	max	min	max
A	4.83	5.21	0.190	0.205
A1	2.29	2.54	0.090	0.100
A2	1.91	2.16	0.075	0.085
b	1.14	1.40	0.045	0.055
b2	1.91	2.20	0.075	0.087
b4	2.92	3.24	0.115	0.128
c	0.61	0.83	0.024	0.033
D	20.80	21.34	0.819	0.840
D1	15.75	16.26	0.620	0.640
D2	1.65	2.15	0.065	0.085
D3	20.30	20.70	0.799	0.815
E	15.75	16.13	0.620	0.635
E1	13.21	13.72	0.520	0.540
e	5.45 BSC		0.215 BSC	
L	19.81	20.60	0.780	0.811
L1	3.81	4.38	0.150	0.172
Q	5.59	6.20	0.220	0.244
R	4.25	5.50	0.167	0.217
W	-	0.10	-	0.004

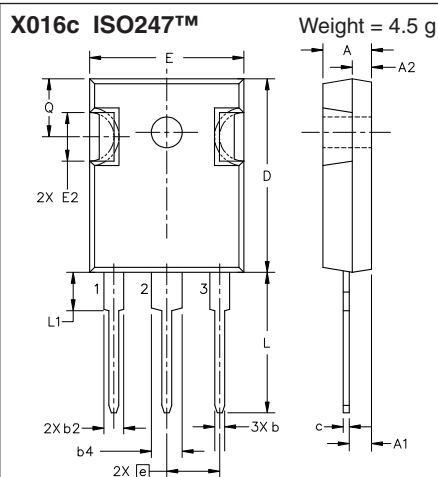
# Outline drawings



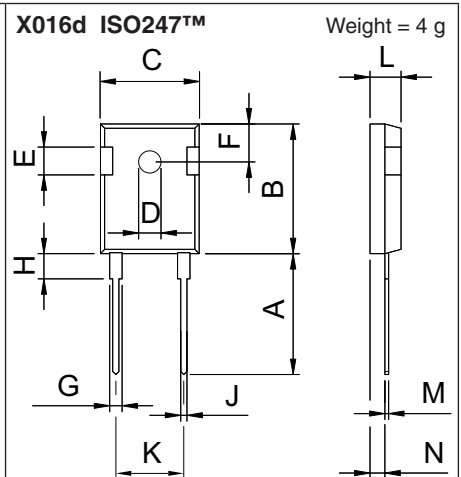
Dimensions in mm and inches (1 mm = 0.0394")



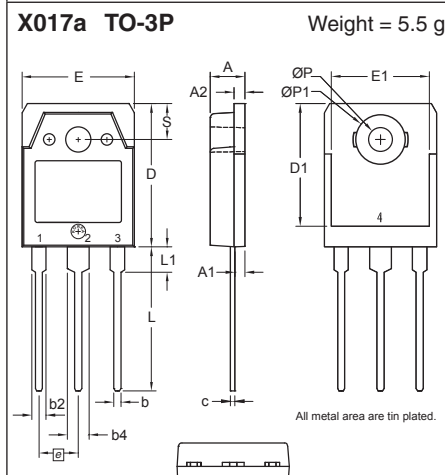
Dim.	Millimeter		Inches	
	min	max	min	max
A	4.83	5.21	0.190	0.205
A1	2.29	2.54	0.090	0.100
A2	1.91	2.16	0.075	0.085
b	1.14	1.40	0.045	0.055
b2	1.91	2.20	0.075	0.087
b4	2.92	3.24	0.115	0.128
c	0.61	0.83	0.024	0.033
D	20.80	21.34	0.819	0.840
D1	15.75	16.26	0.620	0.640
D2	1.65	2.15	0.065	0.085
D3	20.30	20.70	0.799	0.815
E	15.75	16.13	0.620	0.635
E1	13.21	13.72	0.520	0.540
e	10.90 BSC		0.430 BSC	
L	19.81	20.60	0.780	0.811
L1	3.81	4.38	0.150	0.172
Q	5.59	6.20	0.220	0.244
R	4.25	5.50	0.167	0.217
W	-	0.10	-	0.004



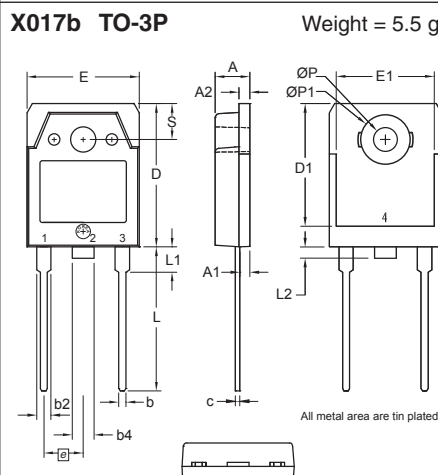
Dim.	Millimeter		Inches	
	min	max	min	max
A	4.70	5.30	0.185	0.209
A1	2.21	2.59	0.087	0.102
A2	1.50	2.49	0.059	0.098
b	0.99	1.40	0.039	0.055
b2	1.65	2.39	0.065	0.094
b4	2.59	3.43	0.102	0.135
c	0.38	0.89	0.015	0.035
D	20.79	21.45	0.819	0.844
E	15.49	16.24	0.610	0.639
E2	4.31	5.48	0.170	0.216
e	5.46 BSC		0.215 BSC	
L	19.80	20.30	0.780	0.799
L1	-	4.49	-	0.177
Ø P	3.55	3.65	0.140	0.144
Q	5.38	6.19	0.212	0.244



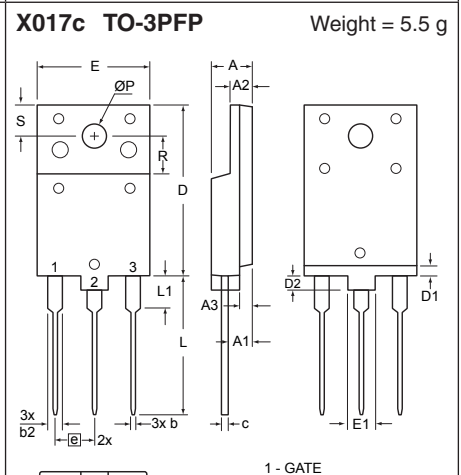
Dim.	Millimeter		Inches	
	min	max	min	max
A	19.81	20.32	0.780	0.800
B	20.80	21.46	0.819	0.845
C	15.75	16.26	0.610	0.640
D	3.55	3.65	0.140	0.144
E	4.32	5.49	0.170	0.216
F	5.40	6.20	0.212	0.244
G	1.65	2.13	0.065	0.084
H	-	4.50	-	0.177
J	1.00	1.40	0.040	0.055
K	10.80	11.00	0.426	0.433
L	4.70	5.30	0.185	0.209
M	0.40	0.80	0.016	0.031
N	1.50	2.49	0.087	0.102



Dim.	Millimeter		Inches	
	min	max	min	max
A	4.70	4.90	0.185	0.193
A1	1.30	1.50	0.051	0.059
A2	1.45	1.65	0.057	0.065
b	0.90	1.15	0.035	0.045
b2	1.90	2.20	0.075	0.087
b4	2.90	3.20	0.114	0.126
c	0.55	0.80	0.022	0.031
D	19.80	20.10	0.780	0.791
D1	16.90	17.20	0.665	0.677
E	15.50	15.80	0.610	0.622
E1	13.50	13.70	0.531	0.539
e	5.45 BSC		0.215 BSC	
L	19.80	20.20	0.780	0.795
L1	3.40	3.60	0.134	0.142
Ø P	3.20	3.40	0.126	0.134
ØP1	6.90	7.10	0.272	0.280
S	4.90	5.10	0.193	0.201



Dim.	Millimeter		Inches	
	min	max	min	max
A	4.70	4.90	0.185	0.193
A1	1.30	1.50	0.051	0.059
A2	1.45	1.65	0.057	0.065
b	0.90	1.15	0.035	0.045
b2	1.90	2.20	0.075	0.087
b4	2.90	3.20	0.114	0.126
c	0.55	0.80	0.022	0.031
D	19.80	20.10	0.780	0.791
D1	16.90	17.20	0.665	0.677
E	15.50	15.80	0.610	0.622
E1	13.50	13.70	0.531	0.539
e	5.45 BSC		0.215 BSC	
L	19.80	20.20	0.780	0.795
L1	3.40	3.60	0.134	0.142
L2	0.00	1.40	0.000	0.055
Ø P	3.20	3.40	0.126	0.134
ØP1	6.90	7.10	0.272	0.280
S	4.90	5.10	0.193	0.201



Dim.	Millimeter		Inches	
	min	max	min	max
A	5.40	5.80	0.213	0.228
A1	3.10	3.50	0.122	0.138
A2	2.90	3.30	0.114	0.130
A3	1.90	2.30	0.075	0.091
b	0.65	0.95	0.026	0.037
b2	1.90	2.30	0.075	0.091
c	0.80	1.10	0.031	0.043
D	24.30	24.70	0.957	0.972
D1	1.30	1.70	0.051	0.067
D2	1.80	2.2	0.071	0.087
E	15.40	15.80	0.606	0.622
E1	3.90	4.30	0.154	0.169
e	5.45 BSC		0.215 BSC	
L	19.00	19.50	0.748	0.768
L1	4.30	4.70	0.169	0.185
Ø P	3.40	3.80	0.134	0.150
R	5.30	5.70	0.209	0.224
S	4.30	4.70	0.169	0.185

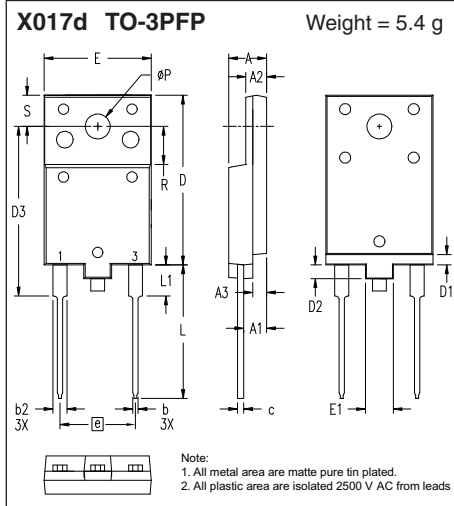
1 - GATE  
2 - DRAIN (COLLECTOR)  
3 - SOURCE (EMITTER)



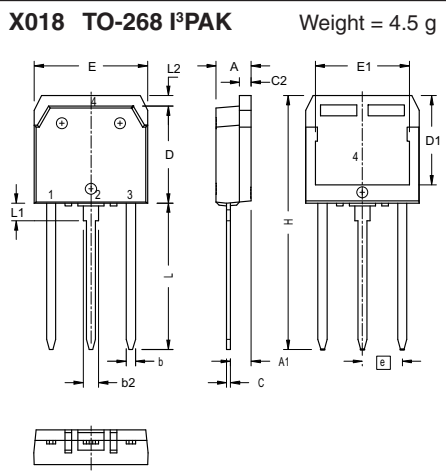
# Outline drawings



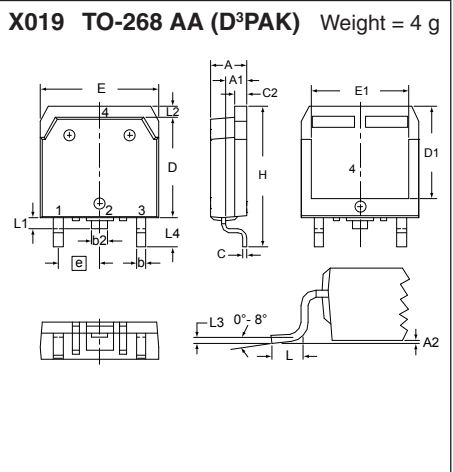
Dimensions in mm and inches (1 mm = 0.0394")



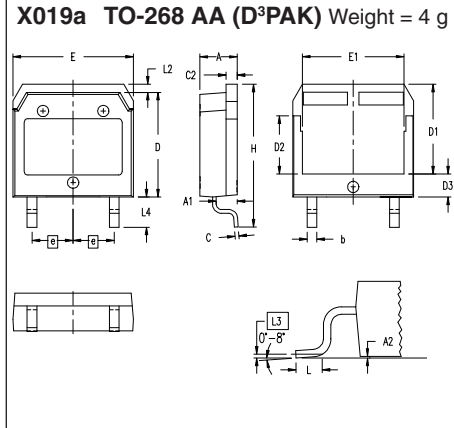
Dim.	Millimeter		Inches	
	min	max	min	max
A	5.40	5.80	0.213	0.228
A1	3.10	3.50	0.122	0.138
A2	2.90	3.30	0.114	0.130
A3	1.90	2.30	0.075	0.091
b	0.65	0.95	0.026	0.037
b2	1.90	2.30	0.075	0.091
c	0.80	1.10	0.031	0.043
D	24.30	24.70	0.957	0.972
D1	1.30	1.70	0.051	0.067
D2	1.80	2.2	0.071	0.087
E	15.40	15.80	0.606	0.622
E1	3.90	4.30	0.154	0.169
e	10.9 BSC		0.430 BSC	
L	19.00	19.50	0.748	0.768
L1	4.30	4.70	0.169	0.185
ØP	3.40	3.80	0.134	0.150
R	5.30	5.70	0.209	0.224
S	4.30	4.70	0.169	0.185



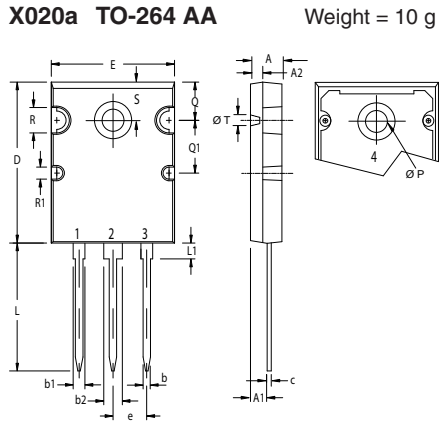
Dim.	Millimeter		Inches	
	min	max	min	max
A	4.90	5.10	0.193	0.201
A1	2.70	2.90	0.106	0.114
b	1.15	1.45	0.045	0.057
b2	1.90	2.10	0.075	0.083
C	0.40	0.65	0.016	0.026
C 2	1.45	1.60	0.057	0.063
D	13.80	14.00	0.543	0.551
D1	12.40	12.70	0.488	0.500
E	15.85	16.05	0.624	0.632
E1	13.30	13.60	0.524	0.535
e	5.45 BSC		0.215 BSC	
H	34.67	35.43	1.365	1.395
L	19.81	20.32	0.780	0.800
L1	2.00	2.30	0.079	0.091
L2	1.00	1.15	0.039	0.045



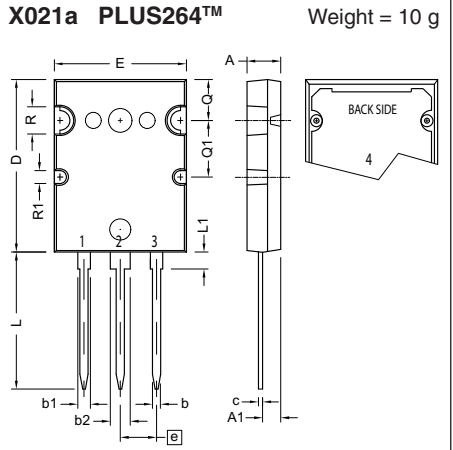
Dim.	Millimeter		Inches	
	min	max	min	max
A	4.90	5.10	0.193	0.201
A1	2.70	2.90	0.106	0.114
A2	0.02	0.25	0.001	0.100
b	1.15	1.45	0.045	0.057
b2	1.90	2.10	0.075	0.083
C	0.40	0.65	0.016	0.026
C 2	1.45	1.60	0.057	0.063
D	13.80	14.00	0.543	0.551
D1	12.40	12.70	0.488	0.500
E	15.85	16.05	0.624	0.632
E1	13.30	13.60	0.524	0.535
e	5.45 BSC		0.215 BSC	
H	18.70	19.10	0.736	0.752
L	2.40	2.70	0.094	0.106
L1	1.20	1.40	0.047	0.055
L2	1.00	1.15	0.039	0.045
L3	2.54 BSC		0.100 BSC	
L4	3.80	4.10	0.150	0.161



Dim.	Millimeter		Inches	
	min	max	min	max
A	4.90	5.10	0.193	0.201
A1	2.70	2.90	0.106	0.114
A2	0.02	0.25	0.001	0.100
b	1.15	1.45	0.045	0.057
C	0.40	0.65	0.016	0.026
C 2	1.45	1.60	0.057	0.063
D	13.80	14.00	0.543	0.551
D1	11.80	12.10	0.465	0.476
D2	7.50	7.80	0.295	0.307
D3	2.90	3.20	0.114	0.126
E	15.85	16.05	0.624	0.632
E1	13.30	13.60	0.524	0.535
e	5.45 BSC		0.215 BSC	
H	18.70	19.10	0.736	0.752
L	1.70	2.00	0.067	0.079
L2	1.00	1.15	0.039	0.045
L3	0.25 BSC		0.010 BSC	
L4	3.80	4.10	0.150	0.161



Dim.	Millimeter		Inches	
	min	max	min	max
A	4.82	5.13	0.190	0.202
A1	2.54	2.89	0.100	0.114
A2	2.00	2.10	0.079	0.083
b	1.12	1.42	0.044	0.056
b2	2.90	3.09	0.114	0.122
c	0.53	0.83	0.021	0.033
D	25.91	26.16	1.020	1.030
E	19.81	19.96	0.780	0.786
e	5.45 BSC		0.215 BSC	
J	0.00	0.25	0.000	0.010
K	0.00	0.25	0.000	0.010
L	20.32	20.83	0.800	0.820
L1	2.29	2.59	0.090	0.102
P	3.17	2.66	0.125	0.144
Q	6.07	6.27	0.239	0.247
Q1	8.38	8.69	0.330	0.342
R	3.81	4.32	0.150	0.170
R1	1.78	2.29	0.070	0.090
S	6.04	6.30	0.238	0.248
T	1.57	1.83	0.062	0.072



Dim.	Millimeter		Inches	
	min	max	min	max
A	4.70	5.31	0.185	0.209
A1	2.59	3.00	0.102	0.118
b	0.94	1.40	0.037	0.055
b1	2.21	2.59	0.087	0.102
b2	2.79	3.20	0.110	0.126
c	0.43	0.74	0.017	0.029
D	25.58	26.59	1.007	1.047
E	19.30	20.29	0.760	0.799
e	5.45 BSC		0.215 BSC	
L	19.79	21.39	0.779	0.842
L1	2.21	2.59	0.087	0.102
Q	6.10	6.50	0.240	0.256
Q1	8.38	8.79	0.330	0.346
ØR	3.94	4.75	0.155	0.187
ØR1	2.16	2.36	0.085	0.093

# Outline drawings

Dimensions in mm and inches (1 mm = 0.0394")

**X022a ISOPLUS264™** Weight = 7.5 g

Dim.	Millimeter		Inches	
	min	max	min	max
A	4.83	5.21	0.190	0.205
A1	2.59	3.00	0.102	0.118
A2	1.17	1.40	0.046	0.055
b	1.14	1.40	0.045	0.055
b1	1.60	1.83	0.063	0.072
b2	2.54	2.79	0.100	0.110
b3	1.47	1.73	0.058	0.068
c	0.51	0.74	0.020	0.029
D	25.91	26.42	1.020	1.040
E	19.56	20.29	0.770	0.799
e	3.81 BSC		0.150 BSC	
L	19.81	21.83	0.780	0.820
L1	2.03	2.59	0.080	0.102
Q	5.33	5.97	0.210	0.235
Q1	12.45	13.03	0.490	0.513
R	3.81	4.57	0.150	0.180
R1	2.54	3.30	0.100	0.130
S	16.97	17.53	0.668	0.690
T	20.34	20.85	0.801	0.821
U	1.65	2.03	0.065	0.080

**X022 ISOPLUS264™** Weight = 7.5 g

c) 5 pin  
d) 3 (sym) w/o pin 2 & 4  
e) 3 (HV) w/o pin 3 & 4

Dim.	Millimeter		Inches	
	min	max	min	max
A	4.83	5.21	0.190	0.205
A1	2.59	3.00	0.102	0.118
A2	1.17	1.40	0.046	0.055
b	1.14	1.40	0.045	0.055
b1	1.60	1.83	0.063	0.072
b2	2.54	2.79	0.100	0.110
b3	1.47	1.73	0.058	0.068
c	0.51	0.74	0.020	0.029
D	25.91	26.42	1.020	1.040
E	19.56	20.29	0.770	0.799
e	3.81 BSC		0.150 BSC	
L	19.81	21.83	0.780	0.820
L1	2.03	2.59	0.080	0.102
Q	5.33	5.97	0.210	0.235
Q1	12.45	13.03	0.490	0.513
R	3.81	4.57	0.150	0.180
R1	2.54	3.30	0.100	0.130
S	16.97	17.53	0.668	0.690
T	20.34	20.85	0.801	0.821
U	1.65	2.03	0.065	0.080

**X024a ISOPLUS i4-PAC™** Weight = 6 g

Dim.	Millimeter		Inches	
	min	max	min	max
A	4.83	5.21	0.190	0.205
A1	2.59	3.00	0.102	0.118
A2	1.17	2.16	0.046	0.085
b	1.14	1.40	0.045	0.055
b2	1.47	1.73	0.058	0.068
b4	2.54	2.79	0.100	0.110
c	0.51	0.74	0.020	0.029
D	20.80	21.34	0.819	0.840
D1	14.99	15.75	0.590	0.620
D2	1.65	2.03	0.065	0.080
D3	20.30	20.70	0.799	0.815
E	19.56	20.29	0.770	0.799
E1	16.76	17.53	0.660	0.690
e	3.81 BSC		0.150 BSC	
L	19.81	21.34	0.780	0.840
L1	2.11	2.59	0.083	0.102
Q	5.33	6.20	0.210	0.244
R	2.54	4.57	0.100	0.180
W	-	0.10	-	0.004

**X024b ISOPLUS i4-PAC™** Weight = 5.5 g

Dim.	Millimeter		Inches	
	min	max	min	max
A	4.83	5.21	0.190	0.205
A1	2.59	3.00	0.102	0.118
A2	1.17	2.16	0.046	0.085
b	1.14	1.40	0.045	0.055
b2	1.47	1.73	0.058	0.068
b4	2.54	2.79	0.100	0.110
c	0.51	0.74	0.020	0.029
D	20.80	21.34	0.819	0.840
D1	14.99	15.75	0.590	0.620
D2	1.65	2.03	0.065	0.080
D3	20.30	20.70	0.799	0.815
E	19.56	20.29	0.770	0.799
E1	16.76	17.53	0.660	0.690
e	7.62 BSC		0.300 BSC	
L	19.81	21.34	0.780	0.840
L1	2.11	2.59	0.083	0.102
Q	5.33	6.20	0.210	0.244
R	2.54	4.57	0.100	0.180
W	-	0.10	-	0.004

**X024c ISOPLUS i4-PAC™** Weight = 5.5 g

\* middle pin cut or not existing depending on assembly line

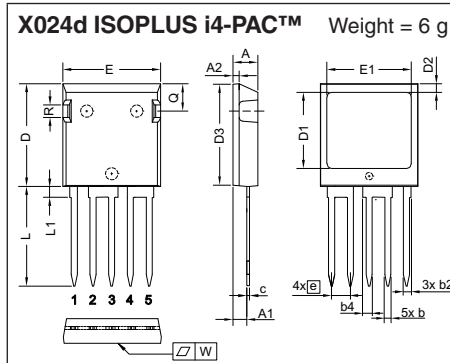
Dim.	Millimeter		Inches	
	min	max	min	max
A	4.83	5.21	0.190	0.205
A1	2.59	3.00	0.102	0.118
A2	1.17	2.16	0.046	0.085
b	1.14	1.40	0.045	0.055
b2	1.47	1.73	0.058	0.068
b4*	2.54	2.79	0.100	0.110
c	0.51	0.74	0.020	0.029
D	20.80	21.34	0.819	0.840
D1	14.99	15.75	0.590	0.620
D2	1.65	2.03	0.065	0.080
D3	20.30	20.70	0.799	0.815
E	19.56	20.29	0.770	0.799
E1	16.76	17.53	0.660	0.690
e	3.81 BSC		0.150 BSC	
e1	11.43 BSC		0.450 BSC	
L	19.81	21.34	0.780	0.840
L1	2.11	2.59	0.083	0.102
Q	5.33	6.20	0.210	0.244
R	2.54	4.57	0.100	0.180
W	-	0.10	-	0.004



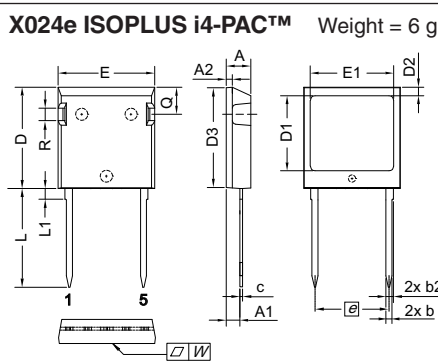
# Outline drawings



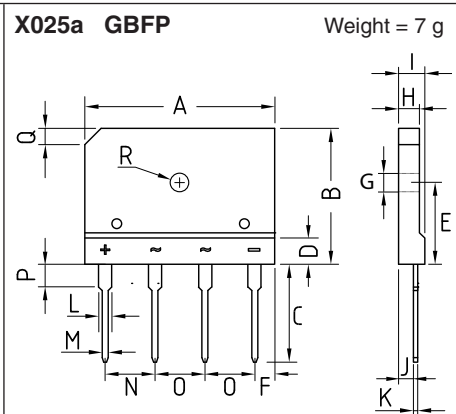
Dimensions in mm and inches (1 mm = 0.0394")



Dim.	Millimeter		Inches	
	min	max	min	max
A	4.83	5.21	0.190	0.205
A1	2.59	3.00	0.102	0.118
A2	1.17	2.16	0.046	0.085
b	1.14	1.40	0.045	0.055
b2	1.47	1.73	0.058	0.068
c	0.51	0.74	0.020	0.029
D	20.80	21.34	0.819	0.840
D1	14.99	15.75	0.590	0.620
D2	1.65	2.03	0.065	0.080
D3	20.30	20.70	0.799	0.815
E	19.56	20.29	0.770	0.799
E1	16.76	17.53	0.660	0.690
e	3.81 BSC		0.150 BSC	
L	19.81	21.34	0.780	0.840
L1	2.11	2.59	0.083	0.102
Q	5.33	6.20	0.210	0.244
R	2.54	4.57	0.100	0.180
W	-	0.10	-	0.004



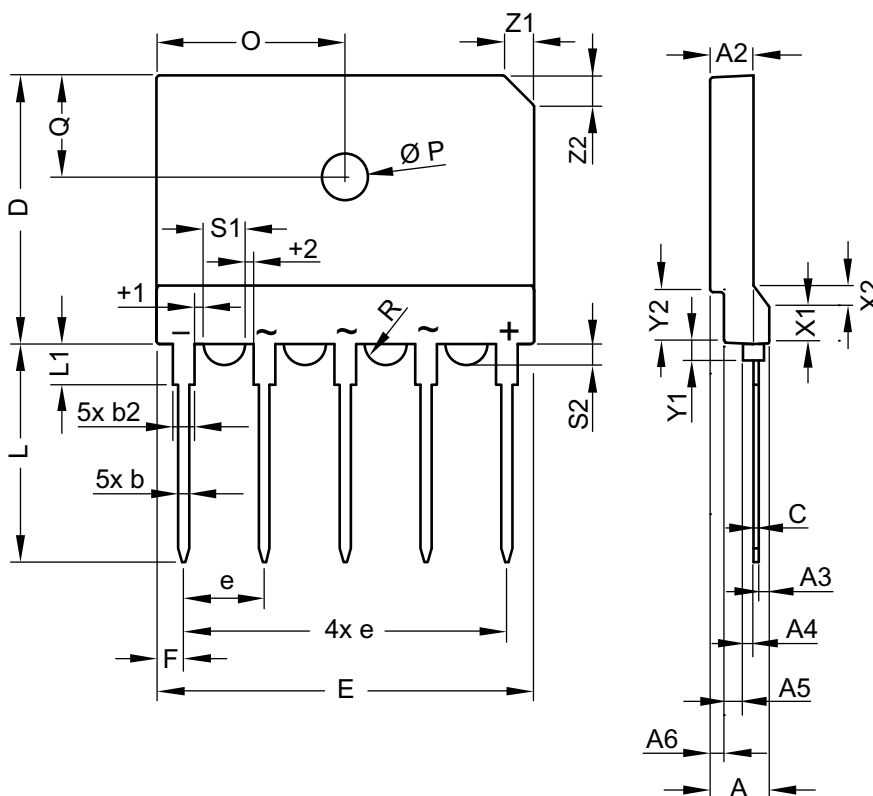
Dim.	Millimeter		Inches	
	min	max	min	max
A	4.83	5.21	0.190	0.205
A1	2.59	3.00	0.102	0.118
A2	1.17	2.16	0.046	0.085
b	1.14	1.40	0.045	0.055
b2	1.47	1.73	0.058	0.068
c	0.51	0.74	0.020	0.029
D	20.80	21.34	0.819	0.840
D1	14.99	15.75	0.590	0.620
D2	1.65	2.03	0.065	0.080
D3	20.30	20.70	0.799	0.815
E	19.56	20.29	0.770	0.799
E1	16.76	17.53	0.660	0.690
e	15.24 BSC		0.600 BSC	
L	19.81	21.34	0.780	0.840
L1	2.11	2.59	0.083	0.102
Q	5.33	6.20	0.210	0.244
R	2.54	4.57	0.100	0.180
W	-	0.10	-	0.004



Dim.	Millimeter		Inches	
	min	max	min	max
A	29.70	30.30	1.170	1.194
B	19.70	20.30	0.776	0.800
C	17.00	18.00	0.670	0.709
D	4.70	4.90	0.185	0.193
E	10.80	11.20	0.426	0.441
F	2.30	2.70	0.091	0.106
G	3.10	3.40	0.122	0.134
H	3.40	3.80	0.134	0.150
I	4.40	4.80	0.173	0.189
J	2.50	2.90	0.099	0.114
K	0.60	0.80	0.024	0.032
L	2.00	2.40	0.079	0.095
M	0.90	1.10	0.035	0.043
N	9.80	10.20	0.386	0.402
O	7.30	7.70	0.288	0.303
P	3.80	4.20	0.150	0.165
Q	(3.0) x 45°		(0.118) x 45°	
Ø R	3.1	3.4	0.122	0.134

**X025b GUPF**

Weight = 8.5 g



Dim.	Millimeter			Inches		
	min	typ.	max	min	typ.	max
A	5.40	5.50	5.60	0.213	0.217	0.221
A2	3.90	4.00	4.10	0.154	0.158	0.162
A3	0.95	1.00	1.10	0.037	0.039	0.043
A4	0.95	1.00	1.05	0.037	0.039	0.041
A5	1.60	1.70	1.80	0.063	0.067	0.071
A6	1.25	1.30	1.35	0.049	0.051	0.053
b	0.95	1.00	1.05	0.037	0.039	0.041
b2	1.95	2.00	2.05	0.077	0.079	0.081
C	0.45	0.50	0.55	0.018	0.020	0.022
D	24.80	25.00	25.20	0.977	0.985	0.993
E	34.70	35.00	35.30	1.367	1.379	1.391
e	BSC 7.50		BSC 0.296			
F	2.40	2.50	2.60	0.095	0.099	0.102
L	2.30	20.40	2.50	0.091	0.804	0.099
L1	3.70	3.75	3.80	0.146	0.148	0.150
O	17.40	17.50	17.60	0.686	0.690	0.693
Ø P	4.10	4.20	4.30	0.162	0.165	0.169
Q	9.20	9.30	9.40	0.362	0.366	0.370
½ R	-	1.77	-	-	0.070	-
s1	3.45	3.50	3.55	0.136	0.138	0.140
s2	1.45	1.50	1.55	0.057	0.059	0.061
t1	0.95	1.00	1.05	0.037	0.039	0.041
t2	0.95	1.00	1.05	0.037	0.039	0.041
x1	3.20	3.30	3.40	0.126	0.130	0.134
x2	1.90	2.00	2.10	0.075	0.079	0.083
y1	1.60	1.65	1.70	0.063	0.065	0.067
y2	4.65	4.70	4.75	0.183	0.185	0.187
z1	2.80	2.90	3.00	0.110	0.114	0.118

# Outline drawings



Dimensions in mm and inches (1 mm = 0.0394")

**X026c ISOPLUS™-DIL (SMD)** Weight = 13 g

Technical drawing showing side and top views of the X026c ISOPLUS™-DIL (SMD) component. Dimensions include: 5 ± 0.05, 0.5 ± 0.02, R1 ± 0.2, 25 ± 0.20, 39 ± 0.15, 1 ± 0.05, 5 ± 0.10, 5 ± 0.2, 37.5 ± 0.20, (11x) 3 ± 0.05, 1 ± 0.05, 1.5, 2.1, 12 ± 0.05, 4 ± 0.05, (3x) 6 ± 0.05.

**X026d ISOPLUS™-DIL (SMD)** Weight = 13 g

Technical drawing showing side and top views of the X026d ISOPLUS™-DIL (SMD) component. Dimensions include: 5 ± 0.1, 0.5 ± 0.15, 29 ± 0.15, 32 ± 0.15, 39 ± 0.15, 1 ± 0.1, 0.8 ± 0, 37.5 ± 0.25, 22x 3 ± 0.1, 2.25 ± 0.1, 1.5, 1 ± 0.15, 24x 0.1 (M) A B C, 1.6, 25 ± 0.25, 3.5 ± 0.02, 3.55 ± 0.02 - 0.15. Detail A shows a SEATING PLANE.

**X027a SOT-227 B miniBLOC** Weight = 29 g  
**X027b SOT-227 UI miniBLOC**

Technical drawing showing side and top views of the X027a and X027b miniBLOC components. Dimensions include: J, K, Z, V, W, Z, P, L, H, A, G, B, C, S, E, F, Q, U, O, R. Includes a table of dimensions in millimeter and inches.

Dim.	Millimeter		Inches	
	min	max	min	max
A	31.50	31.88	1.240	1.255
B	7.80	8.20	0.307	0.323
C	4.09	4.29	0.161	0.169
D	4.09	4.29	0.161	0.169
E	4.09	4.29	0.161	0.169
F	14.91	15.11	0.587	0.595
G	30.12	30.30	1.186	1.193
H	37.80	38.23	1.488	1.505
J	11.68	12.22	0.460	0.481
K	8.92	9.60	0.351	0.378
L	0.74	0.84	0.029	0.033
M	12.50	13.10	0.492	0.516
N	25.15	25.42	0.990	1.001
O	1.95	2.13	0.077	0.084
P	4.95	6.20	0.195	0.244
Q	26.54	26.90	1.045	1.059
R	3.94	4.42	0.155	0.174
S	4.55	4.85	0.179	0.191
T	24.59	25.25	0.968	0.994
U	-0.05	0.10	-0.002	0.004
V	3.20	5.50	0.126	0.217
W	19.81	21.08	0.780	0.830
Z	2.50	2.70	0.098	0.106

**X028 ISOPLUS227™** Weight = 19 g

Technical drawing showing side and top views of the X028 ISOPLUS227™ component. Dimensions include: J, K, Z, V, W, Z, P, L, H, A, G, B, C, S, E, F, Q, U, O, R, X, Y, Z, Ceramic DCB.

Dim.	Millimeter		Inches	
	min	max	min	max
A	31.50	32.26	1.240	1.270
B	7.87	8.38	0.310	0.330
C	3.94	4.19	0.155	0.165
D	3.94	4.19	0.155	0.165
D1	3.81	3.98	0.150	0.157
E	4.06	4.27	0.160	0.168
F	14.91	15.11	0.587	0.595
G	30.12	30.30	1.186	1.193
H	37.80	38.23	1.489	1.505
J	11.81	12.22	0.465	0.481
K	9.40	9.65	0.370	0.380
L	0.76	0.84	0.030	0.033
M	12.60	12.85	0.496	0.506
N	25.15	25.42	0.990	1.001
O	2.54	2.64	0.100	0.105
P	4.95	5.97	0.195	0.235
Q	26.54	26.90	1.045	1.059
R	4.06	4.32	0.160	0.170
S	4.72	4.85	0.186	0.191
T	24.59	25.07	0.968	0.987
U	-0.03	0.05	-0.001	0.002
V	3.30	4.06	0.130	0.160
W	19.81	21.08	0.780	0.830
X	19.56	20.57	0.770	0.810
Y	17.27	18.29	0.680	0.720
Z	22.48	22.66	0.885	0.892

**X030a SMPD-B** Weight = 8.5 g

Technical drawing showing side and top views of the X030a SMPD-B component. Dimensions include: (6x) 1 ± 0.05<sup>2)</sup>, 5.5 ± 0.1, 25 ± 0.2<sup>1)</sup>, 18 ± 0.1, 9 ± 0.1, (3x) 2 ± 0.05<sup>2)</sup>, 23 ± 0.2, 32.7 ± 0.5, 0.5 ± 0.1, 2.75 ± 0.1, 5.5 ± 0.1, 13.5 ± 0.1, 16.25 ± 0.1, 19 ± 0.1, 0 ± 0.15, 2°, 0.1, seating plane, 4 ± 0.05, 0.55 ± 0.1, 2 ± 0.2, 4.85 ± 0.2, 0.05, A (8:1).

Notes:

- 1) protrusion may add 0.2 mm max. on each side
- 2) additional max. 0.05 mm per side by punching misalignment or overlap of dam bar or bending compression
- 3) DCB area 10 to 50 μm convex; position of DCB area in relation to plastic rim: ±25 μm (measured 2 mm from Cu rim)
- 4) terminal plating: 0.2 - 1 μm Ni + 10 - 25 μm Sn (gal v.) cutting edges may be partially free of plating

# Outline drawings



Dimensions in mm and inches (1 mm = 0.0394")

**X031...\* SMPD-X** \* See data sheet for pin arrangement Weight = 8.5 g\*

Dim.	Millimeter		Inches	
	min	max	min	max
A	5.30	5.70	0.209	0.224
A1	3.90	4.10	0.154	0.161
A2	1.40	1.60	0.055	0.063
b	0.90	1.15	0.035	0.045
c	0.45	0.65	0.018	0.026
D	24.80	25.25	0.976	0.994
E	22.80	23.25	0.898	0.915
E1	13.80	14.20	0.543	0.559
e	2.00	BSC	0.079	BSC
e1	8.00	BSC	0.315	BSC
H	32.30	33.30	1.272	1.311
L	4.60	5.30	0.181	0.209
L1	1.30	1.70	0.051	0.067
L2	0.00	0.15	0.000	0.006
S	18.85	20.12	0.742	0.792
S1	1.45	2.08	0.057	0.082
T	20.90	22.17	0.823	0.873
T1	1.42	2.03	0.056	0.080
a	4°	-	4°	-

Note:  
 1. Bottom heatsink meets 2.6 kV AC isolation to the other pins.  
 2. All leads are matte pure tin plated.

**X032... MiniSMPD** \* See data sheet for pin arrangement

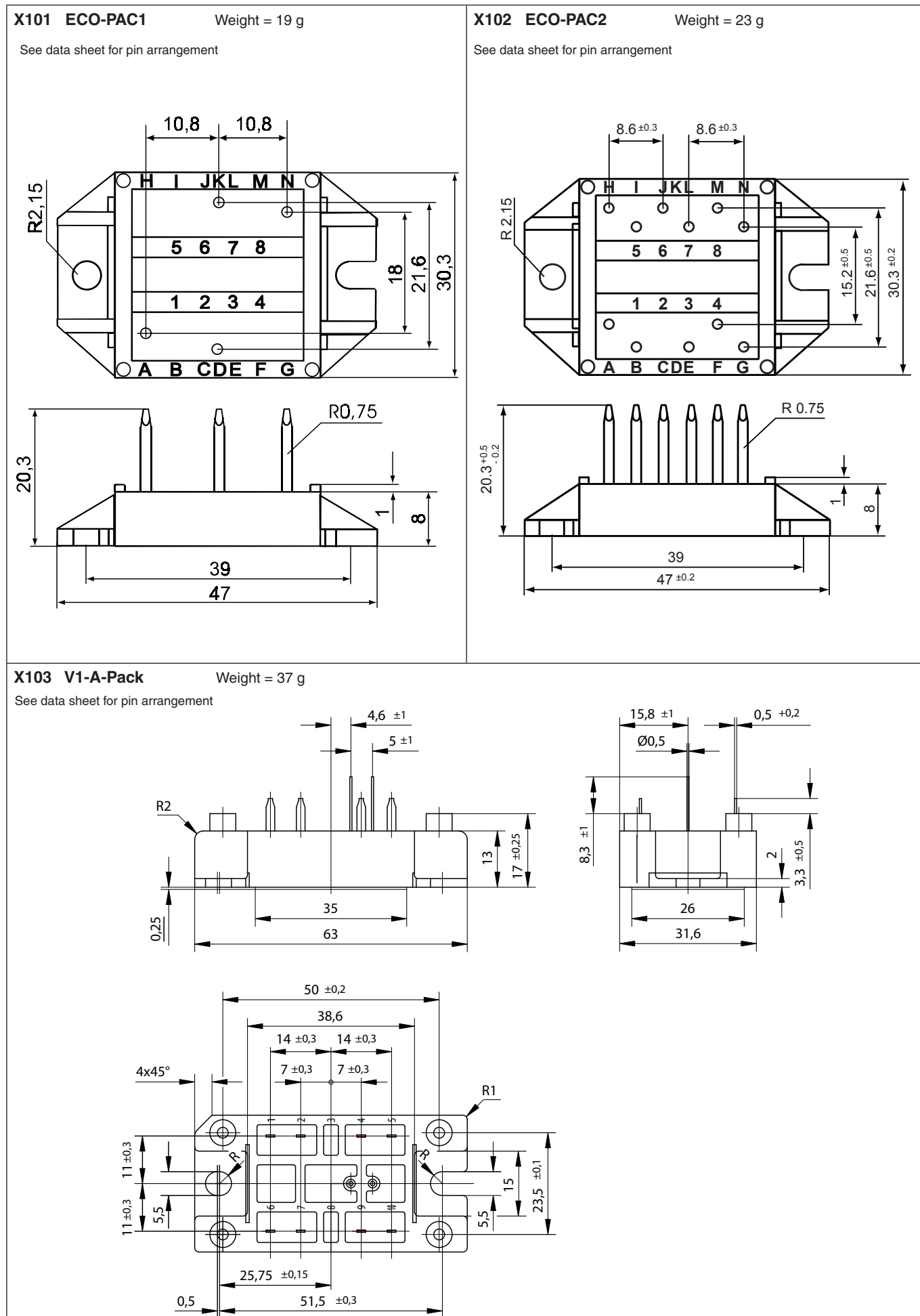
Dim.	Millimeter		Inches	
	min	max	min	max
A	5.30	5.70	0.209	0.224
A1	3.90	4.10	0.154	0.161
A2	1.40	1.60	0.055	0.063
b	0.90	1.15	0.035	0.045
c	0.45	0.65	0.018	0.026
D	16.80	17.20	0.661	0.677
E	19.80	20.20	0.780	0.795
E1	10.80	11.20	0.425	0.441
e	2.00 BSC		0.079 BSC	
H	29.50	30.10	1.161	1.185
L	4.60	5.30	0.181	0.209
L1	1.30	1.70	0.051	0.067
L2	0.00	0.15	0.000	0.006
S	16.80	17.20	0.661	0.677
S1	1.30	1.70	0.051	0.067
T	13.80	14.20	0.543	0.559
T1	1.30	1.70	0.051	0.067

NOTE:  
 1. All leads are matte pure tin plated.  
 2. Cu surface of bottom DCB is pre-Ni plated unless otherwise.  
 3. Cu surface of bottom DCB is electrically isolated 2.500V AC from all other leads.  
 4. Unless other specified, pin out are as follows:  
 Pin #1 - Gate  
 Pin #3 - Gate return or source  
 Pin #4 through #8 - Source (emitter)  
 Pin #9 through #16 - Drain (collector)

# Outline drawings



Dimensions in mm and inches (1 mm = 0.0394")

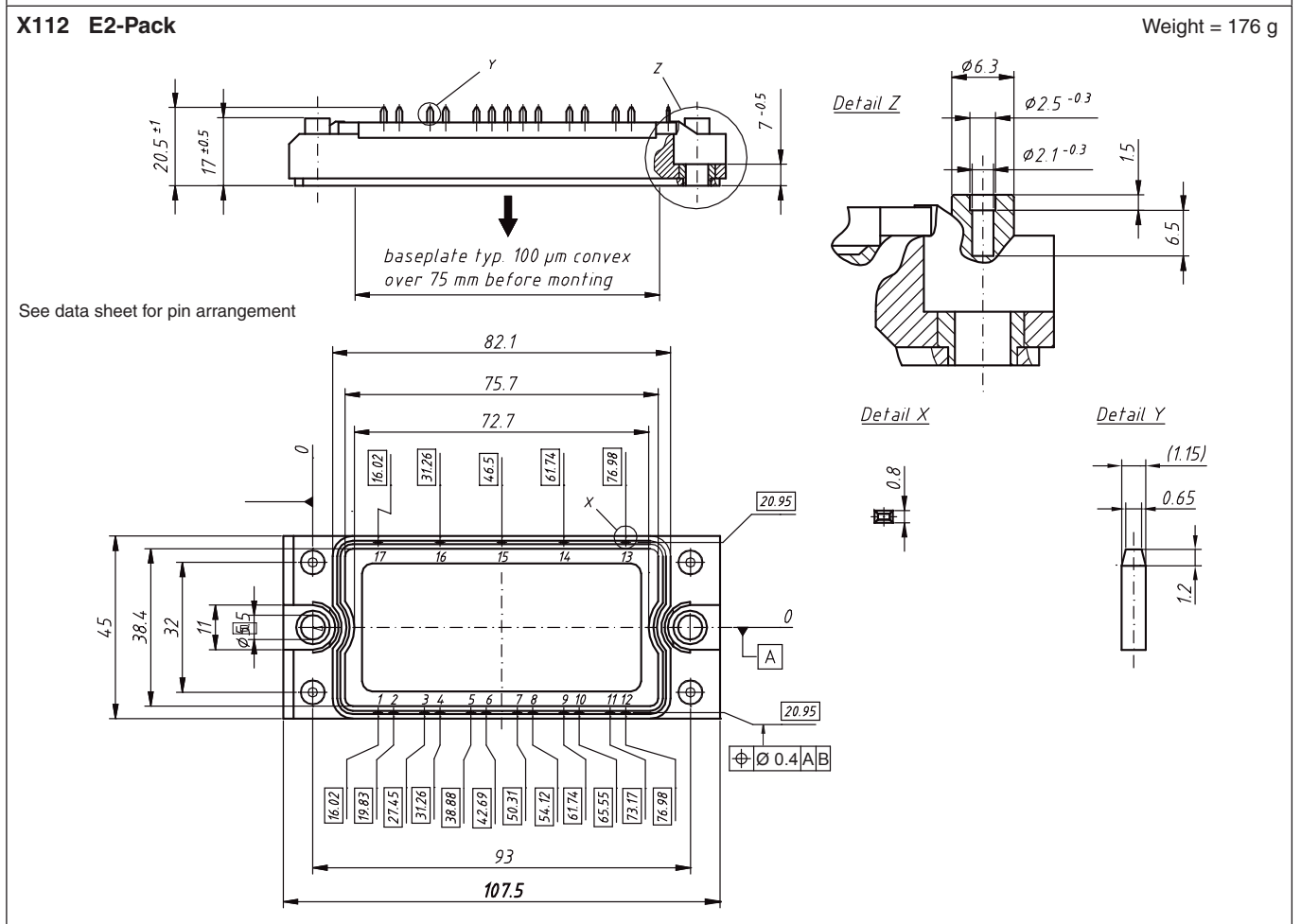
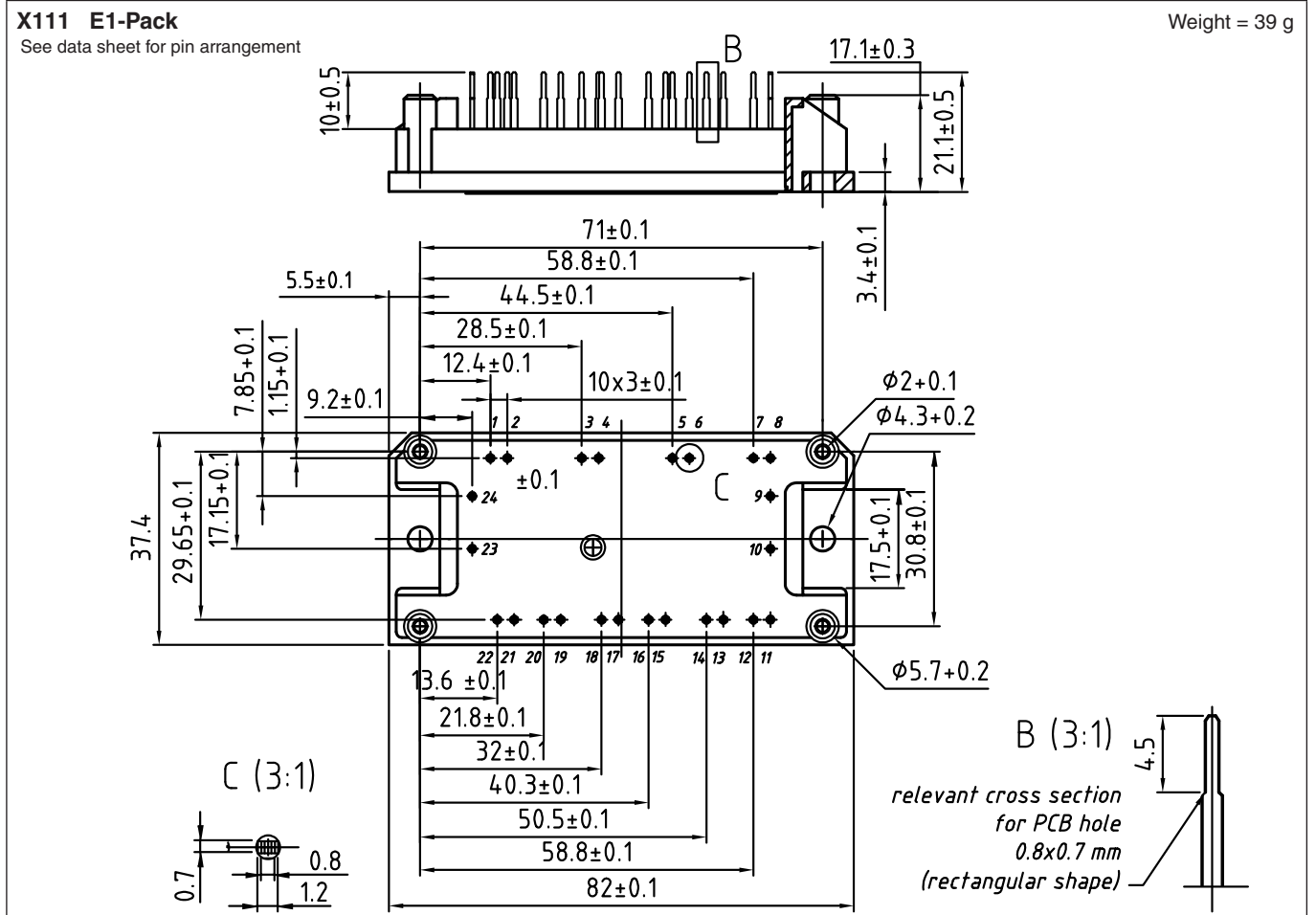




# Outline drawings



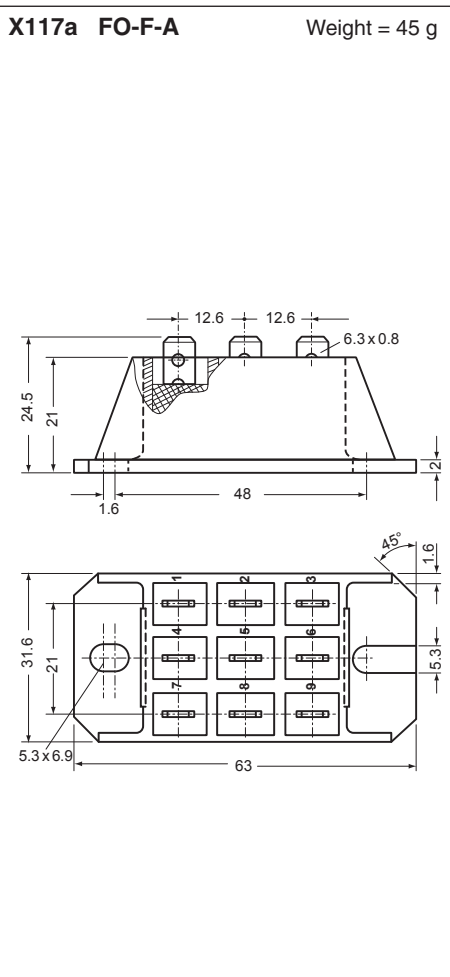
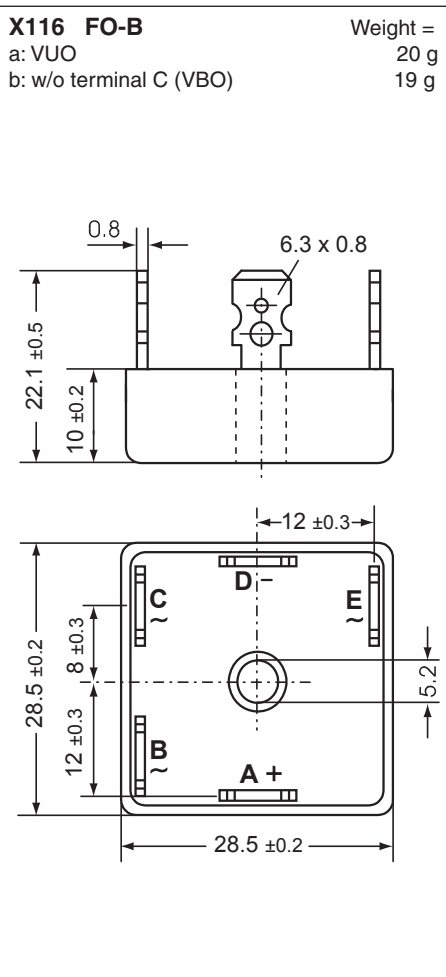
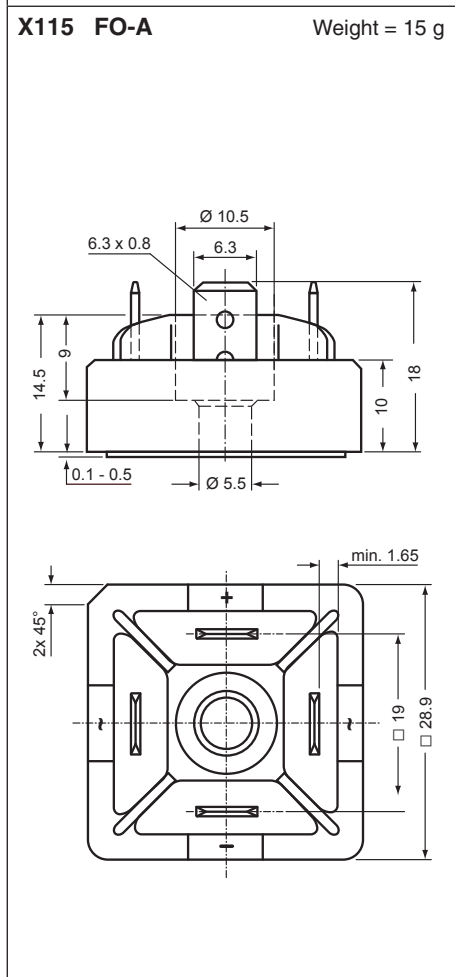
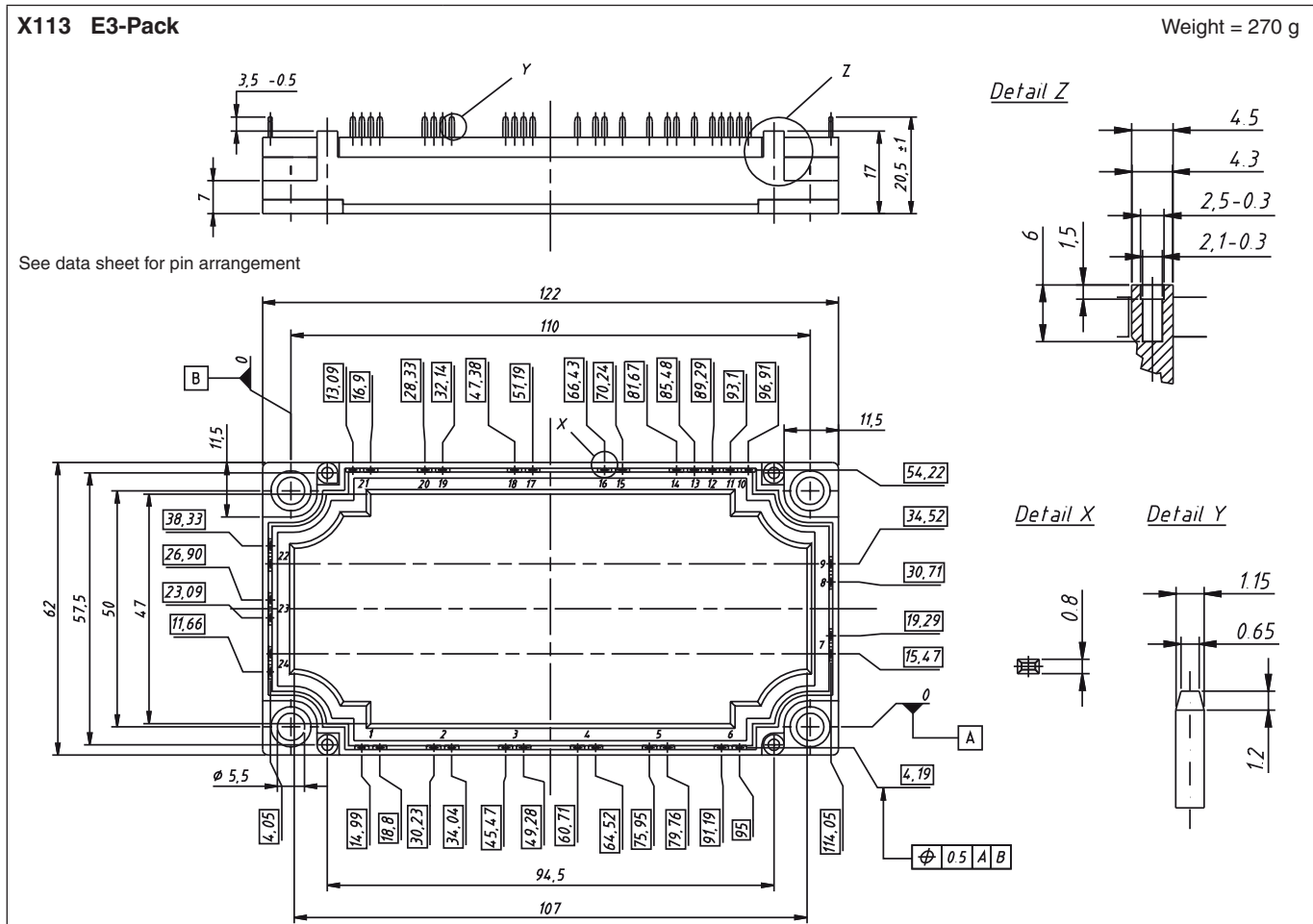
Dimensions in mm and inches (1 mm = 0.0394")



# Outline drawings



Dimensions in mm and inches (1 mm = 0.0394")





# Outline drawings



Dimensions in mm and inches (1 mm = 0.0394")

<p><b>X117b FO-F-B</b> Weight = 45 g</p>	<p><b>X118 FO-T-A</b> Weight = 104 g                      c: w/o terminal 4, 5, &amp; 6 (VVZ &amp; VVZF)                      d: w/o terminal 1, 2, 3, 4, 5, &amp; 6 (VUO)</p> <p>See data sheet for pin arrangement</p>	
<p><b>X119 PWS-A</b> Weight = 104 g                      a: VUO                      b: w/o terminal D (VBO)</p>	<p><b>X120 PWS-B</b> Weight = 203 g                      a: VUO                      b: w/o terminal D (VBO)</p>	<p><b>X121 PWS-C</b> Weight = 250 g                      a: VUO                      b: w/o terminal D (VBO)</p>

# Outline drawings



Dimensions in mm and inches (1 mm = 0.0394")

<p><b>X122 PWS-D</b> Weight =                  a: VUO 159 g                  b: w/o terminal C (VBO) 153 g</p>	<p><b>X122 PWS-D Flat</b> Weight =                  c: VUO 118 g</p>	<p><b>X123 PWS-E</b> Weight =                  a: VTO 284 g                  b: w/o terminal 4, 5 &amp; 6 (VVZ) 284 g                  c: w/o terminal 1, 2, 3, 4, 5 &amp; 6 (VUO) 284 g                  d: w/o terminal D, 3, 4, 5 &amp; 6 (VHF) 273 g                  e: w/o terminal D, 1, 2, 3, 4, 5 &amp; 6 (VBO) 273 g</p>
--	--	--

<p><b>X123 PWS-E Flat</b> Weight = 220 g                  h: w/o terminal 1, 2, 3, 4, 5 &amp; 6 (VUO)</p>	<p><b>X125 TO-240 AA</b> Weight =                  a: + Kelvin contact (MCC) 81 g                  b: + Kelvin contact, w/o pin 6 &amp; 7 (MCD) 81 g                  c: w/o Kelvin contact 4 &amp; 7 (MCC) 81 g                  d: w/o Kelvin contact 4, 7 &amp; pin 6 (MCD) 81 g                  e: w/o pin 4, 5, 6 &amp; 7 (MDD) 81 g                  f: w/o terminal 2 and pin 4 &amp; 7 (VMO) 74 g                  g: + Kelvin contact, w/o pin 7 (VMM) 81 g</p> <p>Optional accessories: Keyed gate/cathode twin plugs                  Wire length: 350 mm, gate = white, cathode = red                  UL 758, style 3751                  Type ZY 200L (L = Left for pin pair 4/5)                  Type ZY 200R (R = Right for pin pair 6/7)</p>
---	---

# Outline drawings



Dimensions in mm and inches (1 mm = 0.0394")

**X126 Y4-M6** Weight =  
 a: + Kelvin cont., w/o pin 8 up to 11 (MCC) 131 g  
 b: + Kelvin cont., w/o pin 6 up to 11 (MCD) 131 g  
 c: w/o pin 4 up to 11 (MDD) 126 g  
 d: w/o terminal 2 & pin 4 up to 11 (MEO) 108 g

Optional accessories for modules  
 Keyed gate/cathode twin plugs with wire length = 350 mm, gate = white, cathode = red  
 Type ZY 180L (L = Left for pin pair 4/5) } UL 758, style 3751  
 Type ZY 180R (R = Right for pin pair 6/7)

**X127 Y4-M5** Weight =  
 a: w/o pin 8 up to 11 (MII) 110 g  
 b: w/o pin 6 up to 11 (MID) 108 g  
 c: w/o pin 4, 5 & 8 up to 11 (MDI) 108 g

General tolerances:  
 DIN ISO 2768-T1-m

**X128 Y3-DCB** Weight =  
 a: w/o pin 4 up to 7 (VMM, MII) 222 g  
 b: w/o pin 4 up to 9 (MID) 220 g  
 c: w/o pin 4 up to 7, 10 & 11 (MDI) 220 g  
 d: w/o terminal 3 & pin 6 up to 11 (VMO) 200 g

**X129 Y2-DCB** Weight =  
 a: + Kelvin contact (MCC) 245 g  
 b: + Kelvin contact, w/o pin 6 & 7 (MCD) 245 g  
 c: w/o pin 4, 5, 6 & 7 (MDD) 244 g

**X130 Y3-Li** Weight =  
 a: w/o pin 4-7, low inductance (VMM, MII) 226 g  
 b: w/o pin 4-9, low inductance (MID) 226 g  
 c: w/o pin 4-7, 10&11, low inductance (MDI) 226 g  
 d: w/o terminal 1&pin 6-11, low ind. (VMO) 206 g  
 e: w/o pin 4&5, low ind. (VMM, MII+NTC) 226 g  
 f: w/o pin 4, 5, 8 & 9, low ind. (MID+NTC) 226 g

**X131 Y1-CU** Weight =  
 a: + Kelvin contact (MCC) 680 g  
 b: + Kelvin contact, w/o pin 6&7 (MCD) 680 g  
 c: w/o pin 4, 5, 6 & 7 (MDD) 680 g

Optional accessories for modules  
 Keyed gate/cathode twin plugs with wire length = 350 mm, gate = white, cathode = red  
 Type ZY 180L (L = Left for pin pair 4/5) } UL 758, style 3751  
 Type ZY 180R (R = Right for pin pair 6/7)

# Outline drawings

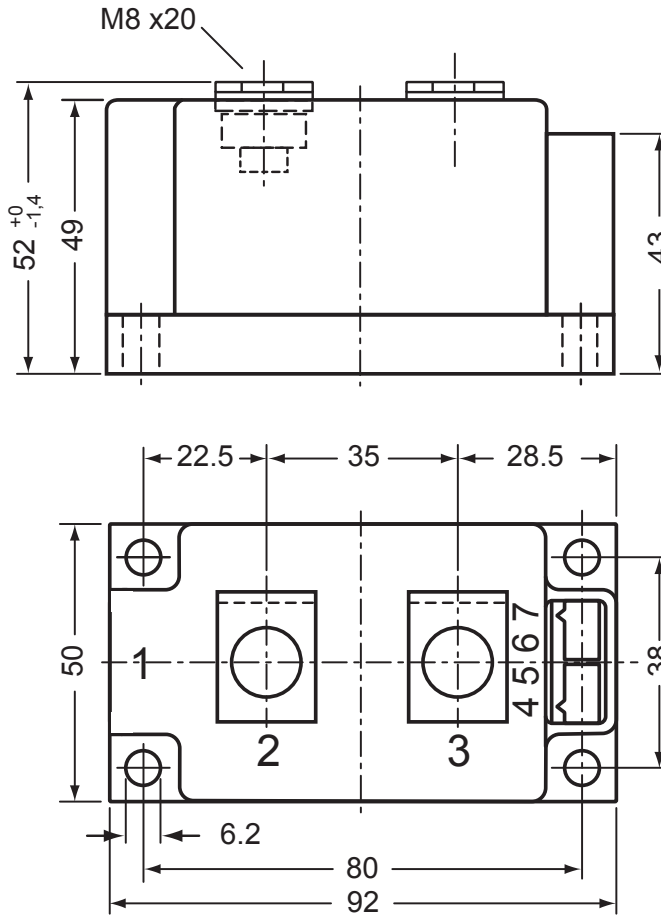


Dimensions in mm and inches (1 mm = 0.0394")

## X132 Y1-2-CU

a: + Kelvin contact w/o pin 6&7 (MCO)  
b: w/o pin 4, 5, 6 & 7 (MDO)

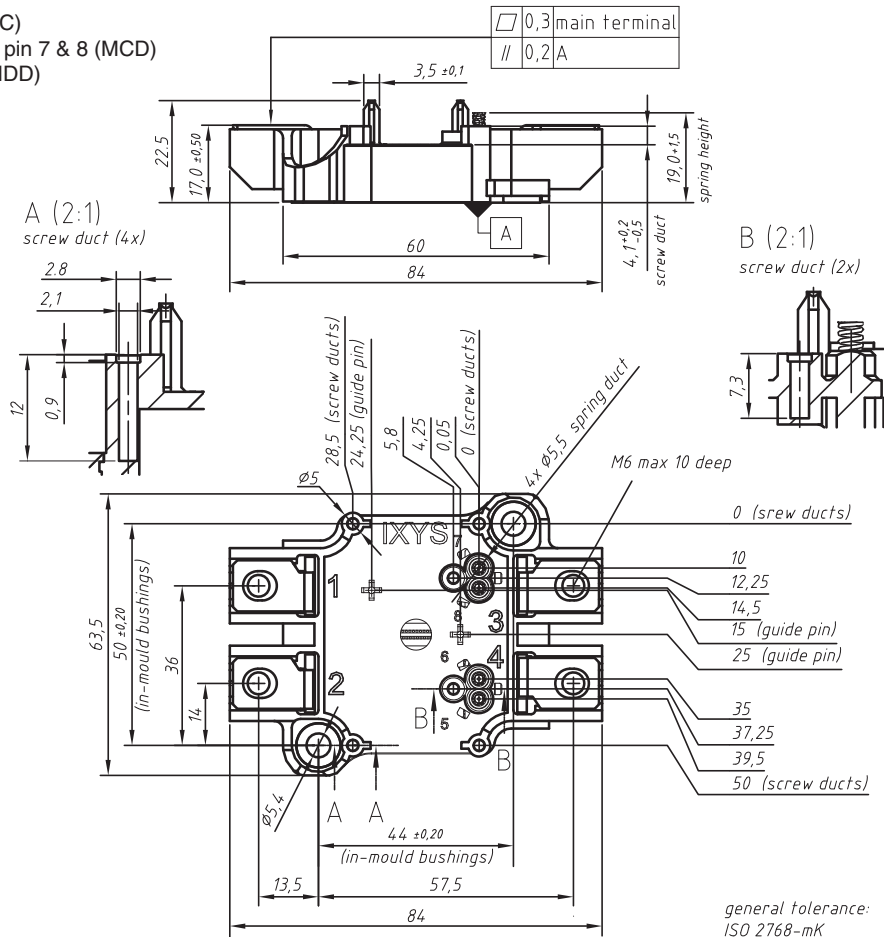
Weight = 650 g



## X141 SimBus A

a: + Kelvin contact (MCC)  
b: + Kelvin contact, w/o pin 7 & 8 (MCD)  
c: w/o pin 5, 6, 7 & 8 (MDD)

Weight = 152 g



# Outline drawings

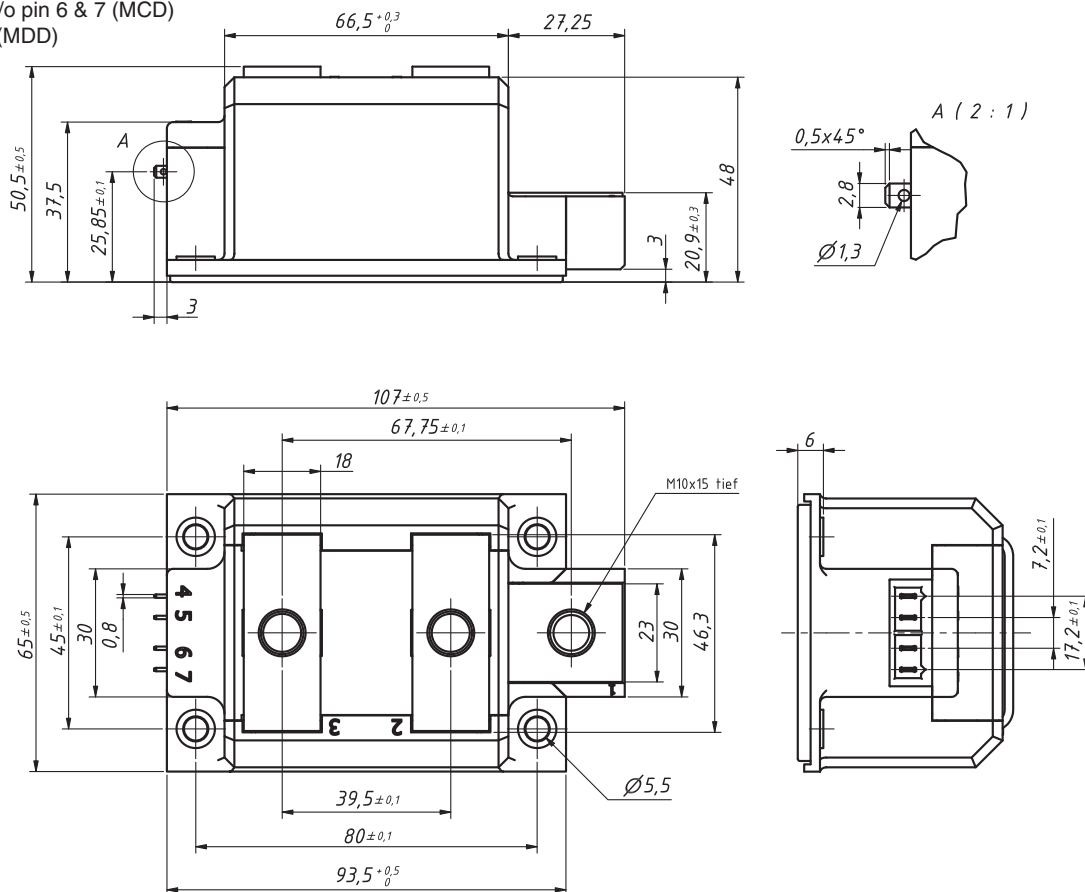


Dimensions in mm and inches (1 mm = 0.0394")

## X142 ComPack

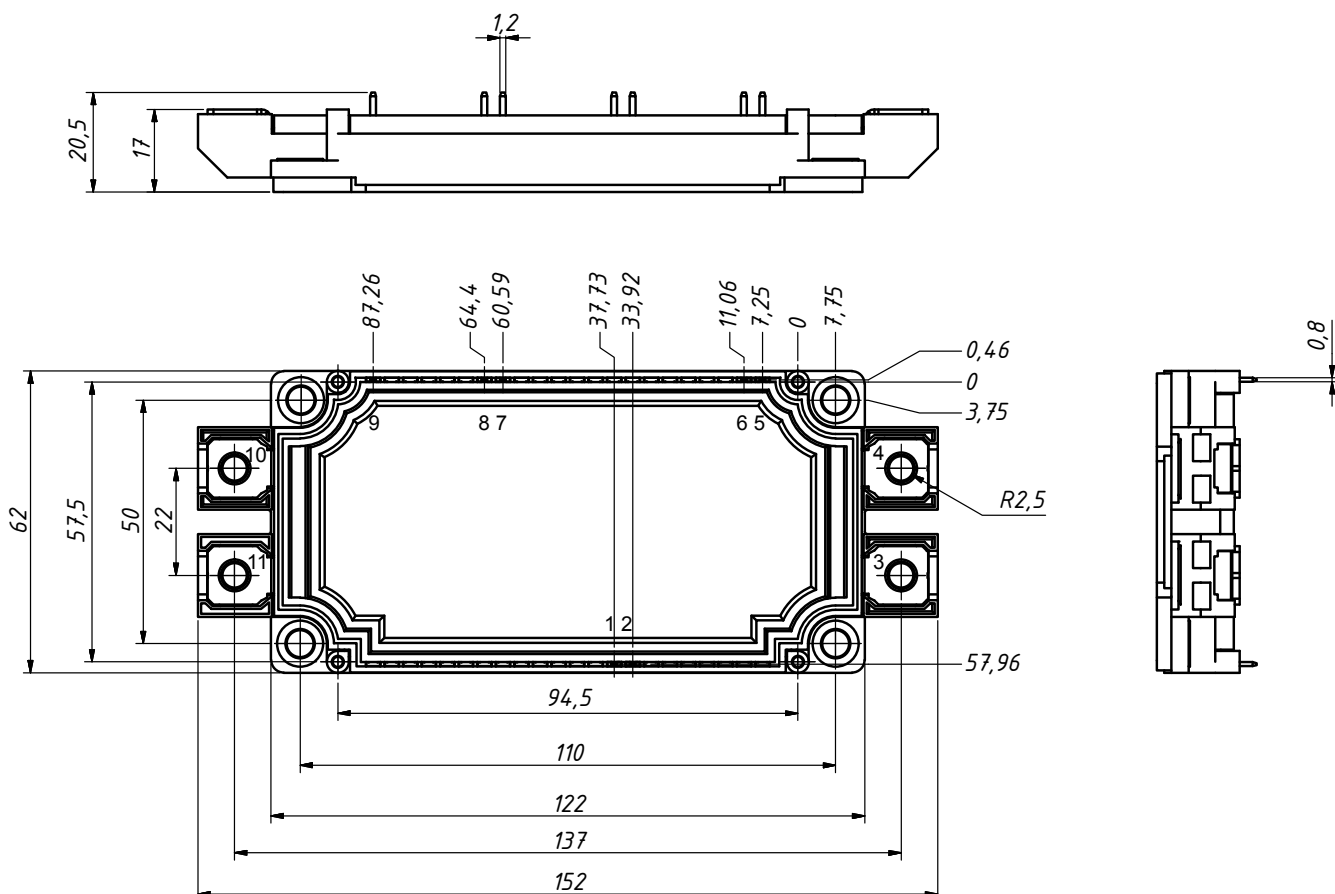
Weight = 500 g

- a: + Kelvin contact (MCC)
- b: + Kelvin contact, w/o pin 6 & 7 (MCD)
- c: w/o pin 4, 5, 6 & 7 (MDD)



## X143a SimBus F

Weight = 150 g



# Outline drawings



Dimensions in mm and inches (1 mm = 0.0394")

<p><b>X200 Metal-can</b> Weight = 2.5 g</p>	<p><b>X201 FP-Case (oilproof)</b> Weight = 0.9 g</p>	<p><b>X202 BOD-Package</b> Weight = 9.5 g</p>
<p><b>X204 DO-203 AA [M] (DO-4)</b> Weight = 6 g</p>	<p><b>X205 DO-203 AA [UNF] (DO-4)</b> Weight = 5.5 g</p>	<p><b>X206a DO-203 AB [UNF] (DO-5)</b>  <b>X206b DO-203 AB [M] (DO-5)</b> Weight = 14 g</p>

# Outline drawings



Dimensions in mm and inches (1 mm = 0.0394")

<p><b>X207 DO-203 AB (DO-5)</b> Weight = 20 g</p>	<p><b>X209 TO-208 AA (TO-48)</b> Weight = 11.6 g</p>	<p><b>X210 TO-208 AC (TO-65)</b> Weight = 21.7 g</p>																																																								
<p><b>X251 UGE-single</b> Weight = 125 g</p>	<p><b>X252 UG</b> Weight = 155 g</p>	<p><b>X253a UG</b> Weight = 310 g b: w/o middle terminal</p>																																																								
			<table border="1"> <thead> <tr> <th>Type</th> <th>a</th> <th>b</th> <th>c</th> <th>d</th> <th>e</th> <th>f</th> <th>g</th> <th>h</th> <th>i</th> <th>k</th> </tr> </thead> <tbody> <tr> <td>UGB 3132 AD</td> <td>80</td> <td>70</td> <td>57</td> <td>58.5</td> <td>260</td> <td>6</td> <td>15</td> <td>15</td> <td>15</td> <td></td> </tr> <tr> <td>UGB 6124 AG</td> <td>135</td> <td>125</td> <td>112</td> <td>58.5</td> <td>260</td> <td>11</td> <td>32.5</td> <td>25</td> <td>32.5</td> <td></td> </tr> <tr> <td>UGD 6123 AG</td> <td>135</td> <td>125</td> <td>112</td> <td>58.5</td> <td>260</td> <td>8</td> <td>30</td> <td>18</td> <td>18</td> <td>30</td> </tr> <tr> <td>UGD 8124 AG</td> <td>135</td> <td>125</td> <td>112</td> <td>58.5</td> <td>260</td> <td>8</td> <td>30</td> <td>18</td> <td>18</td> <td>30</td> </tr> </tbody> </table> <p>Dimensions in mm</p>	Type	a	b	c	d	e	f	g	h	i	k	UGB 3132 AD	80	70	57	58.5	260	6	15	15	15		UGB 6124 AG	135	125	112	58.5	260	11	32.5	25	32.5		UGD 6123 AG	135	125	112	58.5	260	8	30	18	18	30	UGD 8124 AG	135	125	112	58.5	260	8	30	18	18	30
Type	a	b	c	d	e	f	g	h	i	k																																																
UGB 3132 AD	80	70	57	58.5	260	6	15	15	15																																																	
UGB 6124 AG	135	125	112	58.5	260	11	32.5	25	32.5																																																	
UGD 6123 AG	135	125	112	58.5	260	8	30	18	18	30																																																
UGD 8124 AG	135	125	112	58.5	260	8	30	18	18	30																																																



# Outline drawings



Dimensions in mm and inches (1 mm = 0.0394")

