

Вентилятор ADDA купить в Минске tel. +375447584780
www.fotorele.net www.tiristor.by радиодетали, электронные компоненты
email minsk17@tut.by tel.+375 29 758 47 80 МТС

каталог, описание, технические, характеристики, datasheet, параметры, маркировка, габариты, фото,

QR код



**ADDA USA
AC FAN SPECIFICATIONS**

Frame Size	Model Part No.	Bearing Type	Input Volt. / Freq (V/Hz)	Current (A)	Power (W)	Speed (RPM)	Air Flow (CFM)	Pressure (mmAq)	Noise (dB/A)	Weight (g)	Connection Type	Safety Approvals	Units Per Box	Box Wt (LBS.)
80 X 80 X 25	AA8251MB-AT(AW)	B,S,or X	115/50	0.15	17.3	1900	14.6	1.5	18.3	191	Terminal or Lead Wires	CE	200	91
			115/60	0.13	14.9	2500	18.9	2.75	24					
80 X 80 X 25	AA8252MX-AT(AW)	B,S,or X	230/50	0.07	16.1	1850	14.6	1.5	18.3	191	Terminal or Lead Wires	CE	200	91
			230/60	0.06	13.8	2450	18.9	2.75	24					
80 X 80 X 38	AA8381HS-AT(AW)	B,S,or X	115/50	0.13	8.98	2300	24	2.73	25.3	309	Terminal or Lead Wires	UL,CUL,TUV,CE	60	55
			115/60	0.1	6.75	2800	29.6	4.17	31.6					
80 X 80 X 38	AA8381MS-AT(AW)	B,S,or X	115/50	0.08	5.42	2300	24	2.73	25.3	309	Terminal or Lead Wires	UL,CUL,TUV,CE	60	55
			115/60	0.07	4.61	2400	25.1	3.04	26.2					
80 X 80 X 38	AA8382HS-AT(AW)	B,S,or X	230/50	0.07	8.8	2300	24	2.73	25.3	309	Terminal or Lead Wires	UL,CUL,TUV,CE	60	55
			230/60	0.06	6.8	2800	29.6	4.17	31.6					
80 X 80 X 38	AA8382MS-AT(AW)	B,S,or X	230/50	0.05	6.8	2300	24	2.73	25.3	309	Terminal or Lead Wires	UL,CUL,TUV,CE	60	55
			230/60	0.05	5.7	2400	25.1	3.04	25.3					
92 X 92 X 25	AA9251MS-AT(AW)	B,S,or X	115/50	0.15	17.3	1650	22.8	1.15	21.1	220	Terminal or Lead Wires	CE	200	55
			115/60	0.13	14.9	2150	29.1	1.83	26.8					
92 X 92 X 25	AA9252MB-AT(AW)	B,S,or X	230/50	0.07	16.1	1650	22.8	1.15	21.1	220	Terminal or Lead Wires	CE	200	55
			230/60	0.06	13.8	2150	29.1	1.83	26.8					
120 X 120 X 25	AA1251MS-AT(AW)	B,S,or X	115/50	0.22	23	2050	61	3.23	38.7	339	Terminal or Lead Wires	UL,CUL,CE	90	75
			115/60	0.19	19.6	2400	69.4	3.85	44.1					
120 X 120 X 25	AA1252MS-AT(AW)	B,S,or X	230/50	0.11	20.7	2050	61	3.23	38.7	339	Terminal or Lead Wires	UL,CUL,CE	90	75
			230/60	0.1	18.4	2400	69.4	3.85	44.1					
120 X 120 X 38	AA1281UX-AW(AW)	B,S,or X	115/50	0.33	25.82	2500	100.2	0.24	45.8	545	Terminal or Lead Wires	CE	40	55
			115/60	0.27	21.43	2800	110	0.21	48.3					
120 X 120 X 38	AA1281HB-AT(AW)	B,S,or X	115/50	0.25	16.3	2400	92.6	4.8	43.5	545	Terminal or Lead Wires	CE	40	55
			115/60	0.2	14.2	2500	100.2	4.55	44.9					
120 X 120 X 38	AA1282UX-AT(AW)	B,S,or X	230/50	0.17	25.61	2500	100.2	0.24	45.8	545	Terminal or Lead Wires	CE	40	55
			230/60	0.13	20.96	2800	110	0.21	48.3					
120 X 120 X 38	AA1282HB-AT(AW)	B,S,or X	230/50	0.12	16	2400	92.6	4.8	43.5	545	Terminal or Lead Wires	CE	40	55
			230/60	0.1	14	2500	100.2	4.55	44.9					
120 X 120 X 38	AA1281HX-AT(AW)	B,S,or X	115/50	0.25	16.28	2600	83	0.28	42.2	547	Terminal or Lead Wires	UL,CUL,TUV,CE	40	55
			115/60	0.2	14.21	2900	93	0.25	44.5					
120 X 120 X 38	AA1281MX-AT(AW)	B,S,or X	115/50	0.25	15.76	2500	81.5	0.24	40	547	Terminal or Lead Wires	UL,CUL,TUV,CE	40	55
			115/60	0.21	13.74	2700	86.4	0.15	41					
120 X 120 X 38	AA1281LX-AT(AW)	B,S,or X	115/50	0.14	9.21	2400	75.9	0.17	40.1	547	Terminal or Lead Wires	UL,CUL,TUV,CE	40	55
			115/60	0.13	8.86	2100	63.8	0.08	37.9					
120 X 120 X 38	AA1281DX-AT(AW)	B,S,or X	115/50	0.12	8.24	2300	73.5	0.14	39.2	547	Terminal or Lead Wires	UL,CUL,TUV,CE	40	55
			115/60	0.11	7.89	1650	51.4	0.06	30.5					
120 X 120 X 38	AA1282HX-AT(AW)	B,S,or X	230/50	0.12	16	2600	83	0.28	42.2	547	Terminal or Lead Wires	UL,CUL,TUV,CE	40	55
			230/60	0.1	14	2900	93	0.25	44.5					
120 X 120 X 38	AA1282MX-AT(AW)	B,S,or X	230/50	0.1	13.7	2500	81.5	0.24	40	547	Terminal or Lead Wires	UL,CUL,TUV,CE	40	55
			230/60	0.09	12.6	2700	86.4	0.15	41					
120 X 120 X 38	AA1282LX-AT(AW)	B,S,or X	230/50	0.07	9.9	2400	75.9	0.17	40.1	547	Terminal or Lead Wires	UL,CUL,TUV,CE	40	55
			230/60	0.07	9.4	2100	63.8	0.08	37.9					
120 X 120 X 38	AA1282DX-AT(AW)	B,S,or X	230/50	0.06	8	2300	73.5	0.14	39.2	547	Terminal or Lead Wires	UL,CUL,TUV,CE	40	55
			230/60	0.06	7.6	1650	51.4	0.06	30.5					
172 X 150 X 50	AA1751HB-AT(AW)	B,S,or X	115/50	0.48	59.6	2700	194.6	12.75	52.3	922	Terminal or Lead Wires	UL,CUL,CE	20	47.3
			115/60	0.43	39.3	3000	218.2	7.75	54.7					
172 X 150 X 50	AA1751MB-AT(AW)	B,S,or X	115/50	0.35	29.8	2600	186	9.25	50.5	922	Terminal or Lead Wires	UL,CUL,CE	20	47.3
			115/60	0.34	29.3	2500	177.4	3.5	48.8					
172 X 150 X 50	AA1752HB-AT(AW)	B,S,or X	230/50	0.27	47.9	2700	196	12.25	51.3	922	Terminal or Lead Wires	UL,CUL,CE	20	47.3
			230/60	0.23	38.4	3000	217.7	7.25	53.9					
172 X 150 X 50	AA1752MB-AT(AW)	B,S,or X	230/50	0.19	32.6	2600	185.3	9	50.4	922	Terminal or Lead Wires	UL,CUL,CE	20	47.3
			230/60	0.19	29.9	2500	178.6	3.25	48.9					

NOTE B=Ball S=Sleeve X= Hypro AT= Terminals AW= Wires

ADDA USA ALL RIGHTS RESERVED

All specifications subject to change without notice.

ADDA USA
DC FAN SPECIFICATIONS

Frame Dimensions (mm)	Model Part Number	Bearing Type	Volts (V)	Current (A)	Power (W)	Speed (RPM)	Air Flow (CFM)	Pressure (Inches)	Noise (dB/A)	Weight (g)	Features Available	Safety Approvals	Units Per Box	Box Wt. (lbs.)
20 X 20 X 6	AD2005DX-K70	HYPRO	5	0.06	0.30	7000	0.4	0.022	12.0	4	0	CE	600	12.28
20 X 20 X 6	AD2005LX-K70	HYPRO	5	0.10	0.50	10500	0.6	0.066	19.5	4	0	TUV,CE	600	12.28
20 X 20 X 6	AD2005MX-K70	HYPRO	5	0.15	0.75	14000	0.7	0.103	26.9	4	0	CE	600	12.28
20 X 20 X 6	AD2005MX-K73	HYPRO	5	0.12	0.60	14000	0.7	0.130	26.0	4	3	CE	600	12.28
20 X 20 X 6	AD2005DB-K70(S)	1B,1S	5	0.04	0.20	7000	0.4	0.022	12.0	4	0	CE	600	12.28
20 X 20 X 6	AD2005LB-K70(S)	1B,1S	5	0.05	0.25	10500	0.6	0.066	19.5	4	0	TUV,CE	600	12.28
20 X 20 X 6	AD2005MB-K70(S)	1B,1S	5	0.13	0.65	14000	0.7	0.103	26.9	4	0	CE	600	12.28
20 X 20 X 6	AD2012LX-K70	HYPRO	12	0.06	0.72	10500	0.6	0.066	19.5	4	0	CE	600	12.28
20 X 20 X 6	AD2012MX-K70	HYPRO	12	0.07	0.84	14000	0.7	0.103	26.9	4	0	CE	600	12.28
20 X 20 X 6	AD2012LB-K70(S)	1B,1S	12	0.06	0.72	10500	0.6	0.066	19.5	4	0	CE	600	12.28
20 X 20 X 6	AD2012MB-K70(S)	1B,1S	12	0.07	0.84	14000	0.7	0.103	26.9	4	0	CE	600	12.28
20 X 20 X 10	AD2005MX-G70	HYPRO	5	0.14	0.70	11500	0.8	0.072	26.0	6	0	UL,CUL,CE	900	17.60
20 X 20 X 10	AD2005MX-G73	HYPRO	5	0.11	0.55	10000	0.8	0.072	26.0	6	3	CE	900	17.60
20 X 20 X 10	AD2005LB-G70	Bor1B1S	5	0.06	0.30	9000	0.6	0.055	26.0	6	0	UL,CUL,CE	900	17.60
20 X 20 X 10	AD2005LB-G73	BALL	5	0.08	0.40	8000	0.4	0.039	11.0	6	3	CE	900	17.60
20 X 20 X 10	AD2005MB-G70	Bor1B1S	5	0.07	0.35	11500	0.8	0.072	20.0	6	0	UL,CUL,TUV,CE	900	17.60
20 X 20 X 10	AD2005MB-G73	Bor1B1S	5	0.08	0.40	10000	0.8	0.072	26.0	6	3	CE	900	17.60
20 X 20 X 10	AD2012LX-G70	HYPRO	12	0.06	0.72	9000	0.6	0.055	20.0	6	0	UL,CUL,CE	900	17.60
20 X 20 X 10	AD2012LB-G70	BALL	12	0.07	0.84	9000	0.6	0.055	20.0	6	0	CE	900	17.60
20 X 20 X 10	AD2012LM-G70	BALL	12	0.06	0.72	11500	0.8	0.072	26.0	6	0	CE	900	17.60
25 X 25 X 6	AD0205LX-K50	HYPRO	5	0.08	0.40	9000	1.8	0.100	20.5	5	0	TUV,CE	600	13.60
25 X 25 X 6	AD0205LX-K53	HYPRO	5	0.06	0.30	9000	1.8	0.100	20.5	5	3	CE	600	13.60
25 X 25 X 6	AD0205MX-K50	HYPRO	5	0.13	0.65	12000	2.4	0.185	26.0	5	0	CE	600	13.60
25 X 25 X 6	AD0205MX-K53	HYPRO	5	0.12	0.60	12000	2.4	0.185	26.0	5	3	CE	600	13.60
25 X 25 X 6	AD0205LB-K50(S)	1B,1S	5	0.05	0.25	9000	1.8	0.100	20.5	5	0	TUV,CE	600	13.60
25 X 25 X 6	AD0205LB-K53(S)	1B,1S	5	0.05	0.25	9000	1.8	0.100	20.5	5	3	CE	600	13.60
25 X 25 X 6	AD0205MB-K50(S)	1B,1S	5	0.09	0.45	12000	2.4	0.185	26.0	5	0	CE	600	13.60
25 X 25 X 6	AD0205MB-K53(S)	1B,1S	5	0.07	0.35	12000	2.4	0.185	26.0	5	3	UL,CUL,TUV,CE	600	13.60
25 X 25 X 6	AD0205HB-K50(S)	1B,1S	5	0.09	0.45	12000	2.4	0.185	26.0	5	0	CE	600	13.60
25 X 25 X 6	AD0212LX-K50	HYPRO	12	0.06	0.72	9000	1.8	0.100	20.5	5	0	CE	600	13.60
25 X 25 X 6	AD0212MX-K50	HYPRO	12	0.09	1.08	12000	2.4	0.185	26.0	5	0	CE	600	13.60
25 X 25 X 6	AD0212LB-K50(S)	BALL	12	0.06	0.72	9000	1.8	0.100	20.5	5	0	CE	600	13.60
25 X 25 X 6	AD0212MB-K50(S)	BALL	12	0.07	0.84	12000	2.4	0.185	26.0	5	0	CE	600	13.60
25 X 25 X 10	AD0205LX-G50	HYPRO	5	0.10	0.50	8000	1.8	0.116	15.6	8	0	UL,CUL,TUV,CE	600	
25 X 25 X 10	AD0205LX-G50(D)	HYPRO	5	0.08	0.40	4500	1.0	0.034	2.4	8	0	UL,CUL,TUV,CE	600	
25 X 25 X 10	AD0205LX-G53GL	HYPRO	5	0.08	0.40	8000	1.8	0.116	15.6	8	3	UL,CUL,TUV,CE	600	
25 X 25 X 10	AD0205MX-G50GL	HYPRO	5	0.12	0.60	10000	2.3	0.173	23.1	8	0	UL,CUL,TUV,CE	600	
25 X 25 X 10	AD0205MX-G53GL	HYPRO	5	0.12	0.60	10000	2.3	0.173	23.1	8	3	UL,CUL,TUV,CE	600	
25 X 25 X 10	AD0205HX-G50	HYPRO	5	0.18	0.90	12000	2.8	0.236	28.0	8	0	UL,CUL,TUV,CE	600	
25 X 25 X 10	AD0205LB-G50GL	BALL	5	0.10	0.50	8000	1.8	0.116	15.6	8	0	UL,CUL,CE	600	
25 X 25 X 10	AD0205LB-G50(D)	BALL	5	0.07	0.35	6500	1.4	0.064	12.0	8	0	UL,CUL,CE	600	
25 X 25 X 10	AD0205LB-G53GL	BALL	5	0.06	0.30	8000	1.8	0.116	15.6	8	3	UL,CUL,TUV,CE	600	
25 X 25 X 10	AD0205MB-G50GL	BALL	5	0.12	0.60	10000	2.3	0.173	23.1	8	0	UL,CUL,CE	600	

NOTE B=Ball S=Sleeve X=Hypro AT= Terminals AW= Wires

ALL RIGHTS RESERVED

ADDA USA
DC FAN SPECIFICATIONS

Frame Dimensions (mm)	Model Part Number	Bearing Type	Volts (V)	Current (A)	Power (W)	Speed (RPM)	Air Flow (CFM)	Pressure (Inches)	Noise (dB/A)	Weight (g)	Features Available	Safety Approvals	Units Per Box	Box Wt. (lbs.)
25 X 25 X 10	AD0205MB-G53	BALL	5	0.07	0.35	10000	2.3	0.173	23.1	8	3	TUV,CE	600	
25 X 25 X 10	AD0205HB-G50GL	BALL	5	0.14	0.70	12000	2.8	0.236	28.0	8	0	UL,CUL,CE	600	
25 X 25 X 10	AD0205HB-G53	BALL	5	0.12	0.60	12000	2.8	0.236	28.0	8	3	UL,CUL,TUV,CE	600	
25 X 25 X 10	AD0212LX-G50	HYPRO	12	0.07	0.84	8000	1.8	0.116	15.6	8	0	UL,CUL,CE	600	
25 X 25 X 10	AD0212MX-G50GL	HYPRO	12	0.08	0.96	10000	2.3	0.173	23.1	8	0	UL,CUL,CE	600	
25 X 25 X 10	AD0212HX-G50GL	HYPRO	12	0.09	1.08	12000	2.8	0.236	28.0	8	0	UL,CUL,TUV,CE	600	
25 X 25 X 10	AD0212LB-G50	BALL	12	0.07	0.84	8000	1.8	0.116	15.6	8	0	UL,CUL,CE	600	
25 X 25 X 10	AD0212MB-G50	BALL	12	0.08	0.96	10000	2.3	0.173	23.1	8	0	UL,CUL,TUV,CE	600	
25 X 25 X 10	AD0212HB-G50	BALL	12	0.09	1.08	12000	2.8	0.236	28.0	8	0	UL,CUL,CE	600	
25 X 25 X 15	AD0205LX-D50	HYPRO	5	0.08	0.40	5000	1.2	0.040	7.2	8	0	CE		
25 X 25 X 15	AD0205LB-D50	BALL	5	0.06	0.30	5000	1.2	0.040	7.2	8	0	CE		
25 X 25 X 15	AD0205MB-D50	BALL	5	0.09	0.45	6000	1.4	0.054	10.0	8	0	CE		
25 X 25 X 15	AD0205HB-D50	BALL	5	0.13	0.65	8000	1.9	0.114	19.2	8	0	CE		
25 X 25 X 15	AD0205HB-D53	BALL	5	0.13	0.65	8000	1.9	0.114	19.2	8	3	UL,CUL,TUV,CE		
25 X 25 X 15	AD0205HB-D53(A)	BALL	5	0.13	0.65	7500	1.8	0.091	16.7	8	3	UL,CUL,TUV,CE		
30 X 30 X 6	AD0305LX-K70	HYPRO	5	0.09	0.45	7500	2.5	0.082	20.0	6	0	UL,CUL,TUV,CE	400	12.30
30 X 30 X 6	AD0305LX-K73	HYPRO	5	0.07	0.35	7500	2.5	0.082	20.0	6	3	CE	400	12.30
30 X 30 X 6	AD0305MX-K70	HYPRO	5	0.12	0.60	9000	3.3	0.138	27.9	6	0	CE	400	12.30
30 X 30 X 6	AD0305MX-K73	HYPRO	5	0.10	0.50	8000	8.3	0.196	34.7	11	3	CE	400	12.30
30 X 30 X 6	AD0305HX-K70	HYPRO	5	0.18	0.90	10500	3.6	0.164	32.1	6	0	CE	400	12.30
30 X 30 X 6	AD0305HX-K73	HYPRO	5	0.11	0.55	10500	3.6	0.164	32.1	6	3	CE	400	12.30
30 X 30 X 6	AD0305LB-K70(S)	1B,1S	5	0.06	0.30	7500	2.5	0.082	20.0	6	0	UL,CUL,TUV,CE	400	12.30
30 X 30 X 6	AD0305LB-K73(S)	1B,1S	5	0.05	0.25	7500	2.5	0.082	20.0	6	3	CE	400	12.30
30 X 30 X 6	AD0305MB-K70(S)	BALL	5	0.08	0.40	9000	3.3	0.138	27.9	6	0	CE	400	12.30
30 X 30 X 6	AD0305MB-K73(S)	1B,1S	5	0.06	0.30	9000	3.3	0.138	27.9	6	3	CE	400	12.30
30 X 30 X 6	AD0305MB-K73(Y)	1B,1S	5	0.08	0.40	9000	7.2	0.120	34.0	6	3	CE	400	12.30
30 X 30 X 6	AD0305HB-K73(S)	1B,1S	5	0.07	0.35	10500	3.6	0.164	32.1	6	3	CE	400	12.30
30 X 30 X 6	AD0312LX-K70	HYPRO	12	0.06	0.72	7500	2.5	0.082	20.0	6	0	UL,CUL,TUV,CE	400	12.30
30 X 30 X 6	AD0312MX-K70	HYPRO	12	0.10	1.20	9000	3.3	0.138	27.9	6	0	CE	400	12.30
30 X 30 X 6	AD0312HX-K70	HYPRO	12	0.08	0.96	10500	3.6	0.164	32.1	6	0	CE	400	12.30
30 X 30 X 6	AD0312LB-K70(S)	BALL	12	0.06	0.72	7500	2.5	0.082	20.0	6	0	CE	400	12.30
30 X 30 X 6	AD0312MB-K70(S)	BALL	12	0.06	0.72	9000	3.3	0.138	27.9	6	0	UL,CUL,TUV,CE	400	12.30
30 X 30 X 6	AD0312HB-K70(S)	BALL	12	0.09	1.08	10500	3.6	0.164	32.1	6	0	CE	400	12.30
30 X 30 X 10	AD0305DX-G50	HYPRO	5	0.09	0.45	5500	1.8	0.080	17.0	8	0	UL,CUL,CE	400	14.00
30 X 30 X 10	AD0305LX-G50	HYPRO	5	0.12	0.60	8000	3.0	0.115	20.2	8	0	UL,CUL,TUV,CE	400	14.00
30 X 30 X 10	AD0305LX-G53	HYPRO	5	0.09	0.45	8000	3.0	0.115	20.2	8	3	UL,CUL,TUV,CE	400	14.00
30 X 30 X 10	AD0305MX-G53	HYPRO	5	0.11	0.55	9000	4.1	0.148	27.9	8	3	UL,CUL,TUV,CE	400	14.00
30 X 30 X 10	AD0305HX-G50	HYPRO	5	0.17	0.85	10500	4.2	0.210	30.7	8	0	CE	400	14.00
30 X 30 X 10	AD0305DB-G50	BALL	5	0.06	0.30	5500	1.8	0.080	17.0	8	0	UL,CUL,CE	400	14.00
30 X 30 X 10	AD0305LB-G50	BALL	5	0.12	0.60	8000	3.0	0.115	20.2	8	0	UL,CUL,TUV,CE	400	14.00
30 X 30 X 10	AD0305LB-G53	BALL	5	0.08	0.40	8000	3.0	0.115	20.2	8	3	UL,CUL,TUV,CE	400	14.00
30 X 30 X 10	AD0305MB-G50	Bor1B1S	5	0.13	0.65	9000	4.1	0.148	27.9	8	0	UL,CUL,CE	400	14.00
30 X 30 X 10	AD0305MB-G53	Bor1B1S	5	0.11	0.55	9000	4.1	0.148	27.9	8	3	UL,CUL,TUV,CE	400	14.00

NOTE B=Ball S=Sleeve X=Hypro AT= Terminals AW= Wires

ALL RIGHTS RESERVED

ADDA USA
DC FAN SPECIFICATIONS

Frame Dimensions (mm)	Model Part Number	Bearing Type	Volts (V)	Current (A)	Power (W)	Speed (RPM)	Air Flow (CFM)	Pressure (Inches)	Noise (dB/A)	Weight (g)	Features Available	Safety Approvals	Units Per Box	Box Wt. (lbs.)
30 X 30 X 10	AD0305DX-G50	HYPRO	5	0.06	0.72	6000	2.5	0.068	16.0	8	0	CE	400	14.00
30 X 30 X 10	AD0312LX-G50	HYPRO	12	0.07	0.84	8000	3.0	0.115	20.2	8	0	UL,CUL,TUV,CE	400	14.00
30 X 30 X 10	AD0312MX-G50	HYPRO	12	0.12	1.44	9000	4.1	0.148	27.9	8	0	UL,CUL,TUV,CE	400	14.00
30 X 30 X 10	AD0312DB-G50	Bor1B1S	12	0.05	0.60	6000	2.5	0.068	16.0	8	0	UL,CUL,CE	400	14.00
30 X 30 X 10	AD0312LB-G50	BALL	12	0.06	0.72	8000	3.0	0.115	20.2	8	0	UL,CUL,TUV,CE	400	14.00
30 X 30 X 10	AD0312MB-G50	Bor1B1S	12	0.12	1.44	9000	4.1	0.148	27.9	8	0	UL,CUL,CE	400	14.00
30 X 30 X 10	AD0312HB-G50	Bor1B1S	12	0.11	1.32	10500	4.2	0.210	30.7	8	0	CE	400	14.00
30 X 30 X 15	AD0305LB-D50	BALL	5	0.07	0.35	4500	2.2	0.045	10.0	10	0	CE		
30 X 30 X 15	AD0305MB-D50	BALL	5	0.08	0.40	5500	2.6	0.074	16.0	10	0	CE		
30 X 30 X 15	AD0305MB-D50(S)	1B,1S	5	0.10	0.50	5500	2.6	0.074	16.0	10	0	CE		
30 X 30 X 15	AD0305MB-D53	BALL	5	0.06	0.30	5500	2.6	0.074	16.0	10	3	UL,CUL,TUV,CE		
30 X 30 X 15	AD0305HB-D50	Bor1B1S	5	0.13	0.65	7000	3.7	0.110	22.5	10	0	CE		
30 X 30 X 15	AD0305HB-D53	BALL	5	0.10	0.50	7000	3.7	0.110	22.5	10	3	UL,CUL,TUV,CE		
35 X 35 X 6	AD3505LX-K70	HYPRO	5	0.10	0.50	6500	3.5	0.063	19.0	7	0	TUV,CE	400	13.00
35 X 35 X 6	AD3505LX-K73	HYPRO	5	0.08	0.40	6500	3.5	0.063	19.0	7	3	CE	400	13.00
35 X 35 X 6	AD3505MX-K70	HYPRO	5	0.14	0.70	8000	4.7	0.111	28.0	7	0	CE	400	13.00
35 X 35 X 6	AD3505MX-KBO	HYPRO	5	0.14	0.70	7000	3.6	0.097	29.0	4	0	CE	400	13.00
35 X 35 X 6	AD3505LB-K70(S)	1B,1S	5	0.06	0.30	6500	3.5	0.063	19.0	7	0	TUV,CE	400	13.00
35 X 35 X 6	AD3505MB-K70(S)	1B,1S	5	0.10	0.50	8000	4.7	0.111	28.0	7	0	CE	400	13.00
35 X 35 X 6	AD3505MB-K73(S)	1B,1S	5	0.08	0.40	8000	4.7	0.111	28.0	7	3	CE	400	13.00
35 X 35 X 6	AD3505HB-K70(S)	1B,1S	5	0.13	0.65	9500	4.9	0.150	35.0	7	0	CE	400	13.00
35 X 35 X 6	AD3505HB-K73(S)	1B,1S	5	0.09	0.45	9500	4.9	0.150	35.0	7	3	CE	400	13.00
35 X 35 X 6	AD3512LX-K70	HYPRO	12	0.06	0.72	6500	3.5	0.063	19.0	7	0	TUV,CE	400	13.00
35 X 35 X 6	AD3512MX-K70	HYPRO	12	0.08	0.96	8000	4.7	0.111	28.0	7	0	CE	400	13.00
35 X 35 X 6	AD3512HX-K70	HYPRO	12	0.10	1.20	9500	4.9	0.150	35.0	7	0	CE	400	13.00
35 X 35 X 6	AD3512LB-K70(S)	BALL	12	0.05	0.60	6500	3.5	0.063	19.0	7	0	TUV,CE	400	13.00
35 X 35 X 6	AD3512MB-K70(S)	BALL	12	0.06	0.72	8000	4.7	0.111	28.0	7	0	TUV,CE	400	13.00
35 X 35 X 6	AD3512HB-K70	BALL	12	0.08	0.96	9500	4.9	0.150	35.0	7	0	CE	400	13.00
35 X 35 X 10	AD3505LX-G53	HYPRO	5	0.09	0.45	7000	5.1	0.100	27.5	9	3	UL,CUL,TUV,CE	400	13.20
35 X 35 X 10	AD3505MX-G50	HYPRO	5	0.17	0.85	8000	6.0	0.131	30.0	9	0	UL,CUL,TUV,CE	400	13.20
35 X 35 X 10	AD3505MX-G53	HYPRO	5	0.13	0.65	8000	6.0	0.138	30.0	9	3	UL,CUL,TUV,CE	400	13.20
35 X 35 X 10	AD3505HX-G53	HYPRO	5	0.17	0.85	9500	7.1	0.174	37.6	9	3	UL,CUL,TUV,CE	400	13.20
35 X 35 X 10	AD3505LB-G50	BALL	5	0.12	0.60	7000	5.1	0.100	27.5	9	0	UL,CUL,TUV,CE	400	13.20
35 X 35 X 10	AD3505MB-G50	BALL	5	0.13	0.65	8000	6.0	0.131	30.0	9	0	UL,CUL,TUV,CE	400	13.20
35 X 35 X 10	AD3505MB-G53	BALL	5	0.13	0.65	8000	6.2	0.160	27.0	9	3	UL,CUL,TUV,CE	400	13.20
35 X 35 X 10	AD3505MB-G53(S)	1B,1S	5	0.13	0.65	8000	6.0	0.138	30.0	9	3	UL,CUL,TUV,CE	400	13.20
35 X 35 X 10	AD3512LX-G50	HYPRO	12	0.08	0.96	7000	5.1	0.100	27.5	9	0	UL,CUL,TUV,CE	400	13.20
35 X 35 X 10	AD3512MX-G50	HYPRO	12	0.09	1.08	8000	6.0	0.138	30.0	9	0	UL,CUL,TUV,CE	400	13.20
35 X 35 X 10	AD3512HX-G50	HYPRO	12	0.11	1.32	9500	7.1	0.174	37.6	9	0	UL,CUL,TUV,CE	400	13.20
35 X 35 X 10	AD3512LB-G50	BALL	12	0.08	0.96	7000	5.1	0.100	27.5	9	0	UL,CUL,TUV,CE	400	13.20
35 X 35 X 10	AD3512MB-G50	BALL	12	0.09	1.08	8000	6.0	0.138	30.0	9	0	UL,CUL,TUV,CE	400	13.20
35 X 35 X 10	AD3512HB-G50	BALL	12	0.11	1.32	9500	7.1	0.174	37.6	9	0	UL,CUL,TUV,CE	400	13.20
40 X 40 X 6	AD0405LX-K90	HYPRO	5	0.05	0.25	4500	4.2	0.044	19.5	9	0,6	UL,CUL,TUV,CE	400	13.20

NOTE B=Ball S=Sleeve X=Hypro AT= Terminals AW= Wires

ALL RIGHTS RESERVED

ADDA USA
DC FAN SPECIFICATIONS

Frame Dimensions (mm)	Model Part Number	Bearing Type	Volts (V)	Current (A)	Power (W)	Speed (RPM)	Air Flow (CFM)	Pressure (Inches)	Noise (dB/A)	Weight (g)	Features Available	Safety Approvals	Units Per Box	Box Wt. (lbs.)
40 X 40 X 6	AD0405LX-KC0	HYPRO	5	0.11	0.55	4500	3.6	0.061	22.4	9	0	UL,CUL,TUV,CE	400	13.20
40 X 40 X 6	AD0405LX-KC3	HYPRO	5	0.08	0.40	4500	4.6	0.068	27.1	9	3	UL,CUL,TUV,CE	400	13.20
40 X 40 X 6	AD0405MX-K90	HYPRO	5	0.09	0.45	5500	5.2	0.064	23.8	9	0,6	UL,TUV,CE	400	13.20
40 X 40 X 6	AD0405MX-KC0	HYPRO	5	0.20	1.00	5500	4.6	0.093	28.6	9	0,3	UL,CUL,TUV,CE	400	13.20
40 X 40 X 6	AD0405MX-KC3(Y)	HYPRO	5	0.11	0.55	5500	4.6	0.093	28.6	9	3	UL,CUL,TUV,CE	400	13.20
40 X 40 X 6	AD0405HX-K90	HYPRO	5	0.12	0.60	6300	6.0	0.079	27.0	9	0,6	UL,CUL,TUV,CE	400	13.20
40 X 40 X 6	AD0405HX-KC0	HYPRO	5	0.23	1.15	6000	5.0	0.110	31.2	9	0	UL,CUL,TUV,CE	400	13.20
40 X 40 X 6	AD0405HX-KC3	HYPRO	5	0.13	0.65	6000	5.0	0.110	31.2	9	3	UL,CUL,TUV,CE	400	13.20
40 X 40 X 6	AD0405LB-K90(S)	1B,1S	5	0.05	0.25	4800	4.5	0.051	19.9	9	0,6	UL,CUL,TUV,CE	400	13.20
40 X 40 X 6	AD0405MB-K90(S)	1B,1S	5	0.09	0.45	5800	5.5	0.067	25.0	9	0,6	UL,CUL,TUV,CE	400	13.20
40 X 40 X 6	AD0405MB-KC3	BALL	5	0.11	0.55	5800	4.9	0.102	30.0	9	3	UL,CUL,TUV,CE	400	13.20
40 X 40 X 6	AD0405HB-K90(S)	1B,1S	5	0.12	0.60	6600	6.0	0.090	30.0	9	0,6	UL,CUL,TUV,CE	400	13.20
40 X 40 X 6	AD0405MS-K90	S	5	0.09	0.45	5500	5.2	0.064	23.8	9	0	CE	400	13.20
40 X 40 X 6	AD0412LX-K90	HYPRO	12	0.06	0.72	4500	4.4	0.049	20.9	9	0,6	UL,CUL,TUV,CE	400	13.20
40 X 40 X 6	AD0412MX-K90	HYPRO	12	0.06	0.72	5500	5.2	0.064	23.8	9	0,6	UL,CUL,TUV,CE	400	13.20
40 X 40 X 6	AD0412HX-K90	HYPRO	12	0.08	0.96	6300	5.9	0.079	27.0	9	0,6	UL,CUL,TUV,CE	400	13.20
40 X 40 X 6	AD0412LB-K90(S)	1B,1S	12	0.06	0.72	4800	4.7	0.049	21.6	9	0,6	UL,CUL,TUV,CE	400	13.20
40 X 40 X 6	AD0412MB-K90(S)	1B,1S	12	0.06	0.72	5800	5.5	0.067	25.0	9	0,6	UL,CUL,TUV,CE	400	13.20
40 X 40 X 6	AD0412HB-K90(S)	1B,1S	12	0.08	0.96	6600	6.0	0.090	30.0	9	0,6	UL,CUL,TUV,CE	400	13.20
40 X 40 X 8	AD0405LX-J90	HYPRO	5	0.12	0.60	4100	5.1	0.058	20.0	5	0	CE		
40 X 40 X 8	AD0405MX-J90	HYPRO	5	0.16	0.80	5500	6.3	0.094	28.7	5	0	CE		
40 X 40 X 8	AD0405MX-J93	HYPRO	5	0.15	0.75	5500	6.8	0.098	29.0	5	3	CE		
40 X 40 X 8	AD0405HX-J91	HYPRO	5	0.23	1.15	6000	7.5	0.110	31.0	5	1,3	CE		
40 X 40 X 8	AD0405MB-J90	BALL	5	0.20	1.00	5000	6.1	0.089	26.0	5	0	CE		
40 X 40 X 8	AD0412MX-J90	HYPRO	12	0.13	1.56	5000	6.1	0.089	26.0	5	0	CE		
40 X 40 X 9	AD0405HX-RA3	HYPRO	5	0.25	1.25	6000	3.1	0.334	40.3	5	3	CE		
40 X 40 X 10	AD0405DX-G70	HYPRO	5	0.07	0.35	3300	3.8	0.044	14.5	24	0	CE	700	
40 X 40 X 10	AD0405LX-G70	HYPRO	5	0.08	0.40	4200	4.7	0.060	14.0	24	0	UL,CUL,TUV,CE	700	
40 X 40 X 10	AD0405LX-G76	HYPRO	5	0.08	0.40	4200	4.7	0.060	14.0	24	6	UL,CUL,CE	700	
40 X 40 X 10	AD0405MX-G70	HYPRO	5	0.11	0.55	4800	5.7	0.780	19.0	24	0	UL,CUL,TUV,CE	700	
40 X 40 X 10	AD0405MX-G7	HYPRO	5	0.11	0.55	4800	5.7	0.078	20.0	24	6	UL,CUL,CE	700	
40 X 40 X 10	AD0405HX-G70	HYPRO	5	0.19	0.95	6000	6.7	0.100	25.0	24	0,6	UL,CUL,TUV,CE	700	
40 X 40 X 10	AD0405DB-G70	BALL	5	0.07	0.35	3300	3.8	0.044	14.5	24	0	CE	700	
40 X 40 X 10	AD0405LB-G70	BALL	5	0.08	0.40	4600	5.0	0.060	14.0	24	0,6	UL,CUL,TUV,CE	700	
40 X 40 X 10	AD0405MB-G70	BALL	5	0.11	0.55	4800	5.7	0.078	20.0	24	0	UL,CUL,TUV,CE	700	
40 X 40 X 10	AD0405MB-G72	BALL	5	0.15	0.75	4800	5.7	0.078	20.0	24	2	UL,CUL,TUV,CE	700	
40 X 40 X 10	AD0405MB-G73	BALL	5	0.15	0.75	4800	5.7	0.078	20.0	24	3	CE	700	
40 X 40 X 10	AD0405MB-G76	BALL	5	0.11	0.55	5000	6.0	0.080	20.0	24	6	UL,CUL,TUV,CE	700	
40 X 40 X 10	AD0405HB-G70	BALL	5	0.19	0.95	6000	6.8	0.100	25.0	24	0	UL,CUL,TUV,CE	700	
40 X 40 X 10	AD0405HB-G72	BALL	5	0.25	1.25	6000	6.7	0.100	25.0	24	2	CE	700	
40 X 40 X 10	AD0405HB-G76	BALL	5	0.19	0.95	6000	6.8	0.100	25.0	24	6	UL,CUL,TUV,CE	700	
40 X 40 X 10	AD0405LS-G70	S	5	0.08	0.40	4200	4.7	0.060	14.0	24	0,6	UL,CUL,TUV,CE	700	
40 X 40 X 10	AD0405MS-G70	S	5	0.11	0.55	4800	5.7	0.078	20.0	24	0,2,6	UL,CUL,TUV,CE	700	

NOTE B=Ball S=Sleeve X=Hypro AT= Terminals AW= Wires

ALL RIGHTS RESERVED

ADDA USA
DC FAN SPECIFICATIONS

Frame Dimensions (mm)	Model Part Number	Bearing Type	Volts (V)	Current (A)	Power (W)	Speed (RPM)	Air Flow (CFM)	Pressure (Inches)	Noise (dB/A)	Weight (g)	Features Available	Safety Approvals	Units Per Box	Box Wt. (lbs.)
40 X 40 X 10	AD0405HS-G70	S	5	0.19	0.95	6000	6.7	0.100	25.0	24	0,6	UL,CUL,TUV,CE	700	
40 X 40 X 10	AD0405HS-G7B	S	5	0.15	0.75	6000	6.7	0.100	25.0	24	0	CE	700	
40 X 40 X 10	AD0409HS-G70	S	9	0.13	1.17	6000	6.8	0.100	25.0	24	0	UL,CE	700	
40 X 40 X 10	AD0409LS-G70	S	9	0.08	0.72	4200	4.7	0.060	14.0	24	0	CE	700	
40 X 40 X 10	AD0409MS-G70	S	9	0.10	0.90	4800	5.6	0.080	19.0	24	0	CE	700	
40 X 40 X 10	AD0409US-G70	S	9	0.15	1.35	7000	7.7	0.068	29.7	24	0	CE	700	
40 X 40 X 10	AD0412DX-G70	HYPRO	12	0.07	0.84	3300	3.8	0.044	14.5	24	0	CE	700	
40 X 40 X 10	AD0412LX-G70	HYPRO	12	0.07	0.84	4200	4.7	0.060	14.0	24	0,6	UL,CUL,TUV,CE	700	
40 X 40 X 10	AD0412MX-G70	HYPRO	12	0.08	0.96	4800	5.7	0.078	19.0	24	0,6	UL,CUL,TUV,CE	700	
40 X 40 X 10	AD0412HX-G70	HYPRO	12	0.10	1.20	6000	6.7	0.100	25.0	24	0,6	UL,CUL,TUV,CE	700	
40 X 40 X 10	AD0412HX-G71	HYPRO	12	0.10	1.20	6000	6.7	0.100	25.0	24	1	CE	700	
40 X 40 X 10	AD0412DB-G70	BALL	12	0.07	0.84	3300	3.8	0.044	14.5	24	0	CE	700	
40 X 40 X 10	AD0412LB-G70	BALL	12	0.07	0.84	4600	5.0	0.060	14.0	24	0,6	UL,CUL,TUV,CE	700	
40 X 40 X 10	AD0412MB-G70	BALL	12	0.08	0.96	5000	5.9	0.080	20.0	24	0,6	UL,CUL,TUV,CE	700	
40 X 40 X 10	AD0412MB-G72	BALL	12	0.09	1.08	5000	6.0	0.080	20.0	24	2	CE	700	
40 X 40 X 10	AD0412MB-G73	BALL	12	0.09	1.08	4800	5.7	0.078	20.0	24	3	CE	700	
40 X 40 X 10	AD0412HB-G70	BALL	12	0.10	1.20	6000	6.7	0.100	25.0	24	0,6	UL,CUL,TUV,CE	700	
40 X 40 X 10	AD0412HB-G70(U)	BALL	12	0.10	1.20	6800	7.9	0.129	28.0	24	0	UL,CUL,TUV,CE	700	
40 X 40 X 10	AD0412HB-G72	BALL	12	0.10	1.20	6000	6.7	0.100	25.0	24	2,3	CE	700	
40 X 40 X 10	AD0412UB-G70	BALL	12	0.10	1.20	6800	7.9	0.129	28.0	24	0,6	CE	700	
40 X 40 X 10	AD0412DS-G70	S	12	0.07	0.84	3300	3.8	0.044	14.5	24	0	CE	700	
40 X 40 X 10	AD0412LS-G70	S	12	0.07	0.84	4200	4.7	0.060	14.0	24	0,6	UL,CUL,TUV,CE	700	
40 X 40 X 10	AD0412MS-G70	S	12	0.08	0.96	4800	5.7	0.078	20.0	24	0,6	UL,CUL,TUV,CE	700	
40 X 40 X 10	AD0412HS-G70	S	12	0.10	1.20	6000	6.7	0.100	25.0	24	0,6	UL,CUL,TUV,CE	700	
40 X 40 X 10	AD0424LX-G70(T)	HYPRO	24	0.07	1.68	4200	4.7	0.060	14.0	24	0,6	UL,CUL,TUV,CE	700	
40 X 40 X 10	AD0424MX-G70	HYPRO	24	0.05	1.20	4200	4.7	0.068	17.2	24	0	CE	700	
40 X 40 X 10	AD0424MX-G70(T)	HYPRO	24	0.08	1.92	4800	5.7	0.078	20.0	24	0,6	UL,CUL,TUV,CE	700	
40 X 40 X 10	AD0424HX-G70	HYPRO	24	0.09	2.16	6000	6.8	0.100	25.0	24	0	UL,CUL,CSA,TUV,CE	700	
40 X 40 X 10	AD0424HX-G76(T)	HYPRO	24	0.09	2.16	6000	6.7	0.100	25.0	24	0	UL,CUL,TUV,CE	700	
40 X 40 X 10	AD0424LB-G70	BALL	24	0.07	1.68	4600	5.0	0.060	14.0	24	0,6	UL,CUL,TUV,CE	700	
40 X 40 X 10	AD0424MB-G70	BALL	24	0.08	1.92	4800	5.7	0.078	20.0	24	0	UL,CUL,TUV,CE	700	
40 X 40 X 10	AD0424MB-G76	BALL	24	0.08	1.92	5000	5.9	0.080	20.0	24	6	CE	700	
40 X 40 X 10	AD0424HB-G70	BALL	24	0.09	2.16	6000	6.7	0.100	25.0	24	0	UL,CUL,CSA,TUV,CE	700	
40 X 40 X 10	AD0424HB-G76	BALL	24	0.09	2.16	6000	6.7	0.100	25.0	24	6	UL,CUL,TUV,CE	700	
40 X 40 X 10	AD0424LS-G70	S	24	0.07	1.68	4200	4.7	0.060	14.0	24	0	CE	700	
40 X 40 X 10	AD0424LS-G76	S	24	0.07	1.68	4200	4.7	0.060	14.0	24	6	UL,CUL,TUV,CE	700	
40 X 40 X 10	AD0424MS-G70	S	24	0.08	1.92	4800	5.7	0.078	20.0	24	0,6	UL,CUL,TUV,CE	700	
40 X 40 X 10	AD0424HS-G70	S	24	0.09	2.16	6000	6.7	0.100	25.0	24	0	UL,CUL,CSA,TUV,CE	700	
40 X 40 X 10	AD0424HS-G76	S	24	0.09	2.16	6000	6.7	0.100	25.0	24	6	UL,CUL,TUV,CE	700	
40 X 40 X 15	AD0412LX-D50	HYPRO	12	0.08	0.96	6000	6.8	0.161	30.3	27	0	CE	700	44.00
40 X 40 X 15	AD0412LX-D52	HYPRO	12	0.10	1.20	6000	6.8	0.161	30.3	27	2	UL,CUL,TUV,CE	700	44.00
40 X 40 X 15	AD0412LX-D56	HYPRO	12	0.08	0.96	6000	6.8	0.161	30.3	27	6	UL,CUL,CE	700	44.00
40 X 40 X 15	AD0412MX-D50	HYPRO	12	0.10	1.20	7000	8.1	0.210	31.8	27	0,6	UL,CUL,CE	500	44.00

NOTE B=Ball S=Sleeve X=Hypro AT= Terminals AW= Wires

ALL RIGHTS RESERVED

ADDA USA
DC FAN SPECIFICATIONS

Frame Dimensions (mm)	Model Part Number	Bearing Type	Volts (V)	Current (A)	Power (W)	Speed (RPM)	Air Flow (CFM)	Pressure (Inches)	Noise (dB/A)	Weight (g)	Features Available	Safety Approvals	Units Per Box	Box Wt. (lbs.)
40 X 40 X 15	AD0412MX-D52	HYPRO	12	0.12	1.44	7000	8.1	0.210	31.8	27	2	UL,CUL,TUV,CE	500	44.00
40 X 40 X 15	AD0412HX-D50	HYPRO	12	0.12	1.44	8000	9.2	0.287	39.3	27	0,6	UL,CUL,CE	500	44.00
40 X 40 X 15	AD0412LB-D50	BALL	12	0.08	0.96	6000	6.8	0.161	30.3	27	0,6	UL,CUL,CE	500	44.00
40 X 40 X 15	AD0412LB-D50(S)	1B & 1S	12	0.08	0.96	6500	7.3	0.183	30.6	27	0,6	UL,CUL,CE	500	44.00
40 X 40 X 15	AD0412LB-D52	BALL	12	0.10	1.20	6000	6.8	0.161	30.3	27	2	UL,CUL,TUV,CE	500	44.00
40 X 40 X 15	AD0412MB-D50	BALL	12	0.10	1.20	7000	8.1	0.210	31.8	27	0,6	UL,CUL,CE	500	44.00
40 X 40 X 15	AD0412MB-D50(S)	1B & 1S	12	0.10	1.20	7500	8.5	0.231	33.5	27	0,6	UL,CUL,CE	500	44.00
40 X 40 X 15	AD0412MB-D52	BALL	12	0.12	1.44	7000	8.1	0.210	31.8	27	2	UL,CUL,TUV,CE	500	44.00
40 X 40 X 15	AD0412HB-D50	BALL	12	0.12	1.44	8000	9.2	0.287	39.3	27	0,6	UL,CUL,CE	500	44.00
40 X 40 X 15	AD0412HB-D50(S)	1B & 1S	12	0.12	1.44	8500	10.2	0.298	39.8	27	0,6	UL,CUL,CE	500	44.00
40 X 40 X 15	AD0412HB-D52	BALL	12	0.15	1.80	8000	9.2	0.287	39.3	27	2	UL,CUL,TUV,CE	500	44.00
40 X 40 X 15	AD0412HB-D56	BALL	12	0.12	1.44	8000	9.2	0.287	39.3	27	0,6	UL,CUL,CE	500	44.00
40 X 40 X 15	AD0412LS-D50	S	12	0.08	0.96	6000	6.8	0.161	30.3	27	0,6	UL,CUL,CE	500	44.00
40 X 40 X 15	AD0412MS-D50	S	12	0.10	1.20	7000	8.1	0.210	31.8	27	0,6	UL,CUL,CE	500	44.00
40 X 40 X 15	AD0412HS-D50	S	12	0.12	1.44	8000	9.2	0.287	39.3	27	0,6	UL,CUL,CE	500	44.00
40 X 40 X 20	AD0405LX-C50	HYPRO	5	0.14	0.70	5700	7.2	0.142	22.4	28	0,6	UL,CUL,TUV,CE	500	36.96
40 X 40 X 20	AD0405MX-C50	HYPRO	5	0.16	0.80	6300	7.8	0.171	26.3	28	0,6	UL,CUL,TUV,CE	500	36.96
40 X 40 X 20	AD0405HX-C50	HYPRO	5	0.29	1.45	7500	9.2	0.250	31.0	28	0,6	UL,CUL,TUV,CE	500	36.96
40 X 40 X 20	AD0405HX-C52	HYPRO	5	0.40	2.00	7500	9.2	0.250	31.0	28	2	UL,CUL,TUV,CE	500	36.96
40 X 40 X 20	AD0405DB-C50	BALL	5	0.12	0.60	4200	4.9	0.080	16.5	28	0,6	CE	500	36.96
40 X 40 X 20	AD0405LB-C50	BALL	5	0.14	0.70	6000	7.2	0.142	22.4	28	0,6	UL,CUL,TUV,CE	500	36.96
40 X 40 X 20	AD0405MB-C50	BALL	5	0.16	0.80	6500	8.1	0.171	27.0	28	0,6	UL,CUL,TUV,CE	500	36.96
40 X 40 X 20	AD0405HB-C50	BALL	5	0.29	1.45	7800	9.9	0.256	31.9	28	0	UL,CUL,TUV,CE	500	36.96
40 X 40 X 20	AD0405HB-C52	BALL	5	0.40	2.00	7800	9.9	0.256	31.9	28	2	UL,CUL,TUV,CE	500	36.96
40 X 40 X 20	AD0405HB-C56	BALL	5	0.29	1.45	7800	9.9	0.256	31.9	28	6	CE	500	36.96
40 X 40 X 20	AD0405DS-C50	S	5	0.12	0.60	3700	4.7	0.064	10.0	28	0	CE	500	36.96
40 X 40 X 20	AD0405LS-C50	S	5	0.14	0.70	5700	7.2	0.142	22.4	28	0,6	UL,CUL,TUV,CE	500	36.96
40 X 40 X 20	AD0405MS-C50	S	5	0.16	0.80	6300	7.8	0.171	26.3	28	0,6	UL,CUL,TUV,CE	500	36.96
40 X 40 X 20	AD0405HS-C50	S	5	0.29	1.45	7500	9.2	0.250	31.0	28	0	UL,CUL,TUV,CE	500	36.96
40 X 40 X 20	AD0405HS-C56	S	5	0.29	1.45	7500	9.2	0.250	31.0	28	6	CE	500	36.96
40 X 40 X 20	AD0412DX-C50	HYPRO	12	0.05	0.60	3700	4.7	0.064	10.0	27	0,6	UL,CUL,CE	500	36.96
40 X 40 X 20	AD0412LX-C50	HYPRO	12	0.07	0.84	6000	7.5	0.154	23.9	27	0,6	UL,CUL,TUV,CE	500	36.96
40 X 40 X 20	AD0412MX-C50	HYPRO	12	0.08	0.96	6700	8.3	0.180	27.5	28	0,6	UL,CUL,TUV,CE	500	36.96
40 X 40 X 20	AD0412MX-C53	HYPRO	12	0.13	1.56	6700	8.3	0.180	27.5	28	3	UL,CUL,TUV,CE	500	36.96
40 X 40 X 20	AD0412HX-C50	HYPRO	12	0.11	1.32	7500	9.6	0.240	31.0	27	0,6	UL,CUL,TUV,CE	500	36.96
40 X 40 X 20	AD0412DB-C50	BALL	12	0.05	0.60	4200	4.9	0.080	16.5	27	0	UL,CUL,CE	500	36.96
40 X 40 X 20	AD0412LB-C50	BALL	12	0.07	0.84	6200	7.7	0.165	25.0	28	0,6	UL,CUL,TUV,CE	500	36.96
40 X 40 X 20	AD0412LB-C51	BALL	12	0.11	1.32	6200	7.7	0.165	25.0	28	1,2	UL,CUL,TUV,CE	500	36.96
40 X 40 X 20	AD0412MB-C50	BALL	12	0.08	0.96	6900	8.5	0.190	28.5	28	0,6	UL,CUL,TUV,CE	500	36.96
40 X 40 X 20	AD0412MB-C52	BALL	12	0.13	1.56	6900	8.5	0.190	28.5	28	2,3	UL,CUL,TUV,CE	500	36.96
40 X 40 X 20	AD0412HB-C50	BALL	12	0.10	1.20	7800	10.1	0.263	31.9	28	0,6	UL,CUL,TUV,CE	500	36.96
40 X 40 X 20	AD0412HB-C52	BALL	12	0.15	1.80	7800	10.1	0.263	31.9	28	2	CE	500	36.96
40 X 40 X 20	AD0412HB-C53	BALL	12	0.15	1.80	7800	10.1	0.263	31.9	28	3	UL,CUL,TUV,CE	500	36.96

NOTE B=Ball S=Sleeve X=Hypro AT= Terminals AW= Wires

ALL RIGHTS RESERVED

ADDA USA
DC FAN SPECIFICATIONS

Frame Dimensions (mm)	Model Part Number	Bearing Type	Volts (V)	Current (A)	Power (W)	Speed (RPM)	Air Flow (CFM)	Pressure (Inches)	Noise (dB/A)	Weight (g)	Features Available	Safety Approvals	Units Per Box	Box Wt. (lbs.)
40 X 40 X 20	AD0412UB-C50	BALL	12	0.14	1.68	8500	10.6	0.325	36.1	28	0,6	UL,CUL,TUV,CE	500	36.96
40 X 40 X 20	AD0412DS-C56	S	12	0.05	0.60	3700	4.7	0.064	10.0	27	6	UL,CUL,CE	500	36.96
40 X 40 X 20	AD0412LS-C50	S	12	0.07	0.84	6000	7.5	0.154	23.9	27	0	UL,CUL,TUV,CE	500	36.96
40 X 40 X 20	AD0412LS-C56	S	12	0.07	0.84	6000	7.5	0.154	23.9	27	6	CE	500	36.96
40 X 40 X 20	AD0412MS-C50	S	12	0.08	0.96	6700	8.3	0.180	27.5	28	0,6	UL,CUL,TUV,CE	500	36.96
40 X 40 X 20	AD0412HS-C50	S	12	0.11	1.32	7500	9.6	0.240	31.0	27	0,6	UL,CUL,TUV,CE	500	36.96
40 X 40 X 20	AD0412HS-C52	S	12	0.15	1.80	7500	9.6	0.240	31.0	28	2	UL,CUL,TUV,CE	500	36.96
40 X 40 X 20	AD0412US-C50	S	12	0.14	1.68	8200	10.3	0.305	35.0	28	0	UL,CUL,TUV,CE	500	36.96
40 X 40 X 20	AD0424LX-C50	B or S	24	0.06	1.44	6000	7.5	0.154	23.9	28	0,6	UL,CUL,TUV,CE	500	36.96
40 X 40 X 20	AD0424MX-C50	B or S	24	0.07	1.68	6700	8.3	0.180	27.5	28	0,6	UL,CUL,TUV,CE	500	36.96
40 X 40 X 20	AD0424HX-C50	B or S	24	0.09	2.16	7500	9.6	0.240	31.0	27	0,6	UL,CUL,TUV,CE	500	36.96
40 X 40 X 20	AD0424LB-C50	BALL	24	0.06	1.44	6200	7.7	0.165	25.0	28	0,6	UL,CUL,TUV,CE	500	36.96
40 X 40 X 20	AD0424MB-C50	BALL	24	0.07	1.68	6900	8.5	0.190	28.5	28	0,6	UL,CUL,TUV,CE	500	36.96
40 X 40 X 20	AD0424HB-C50	BALL	24	0.09	2.16	7800	10.1	0.263	31.9	28	0,6	UL,CUL,TUV,CE	500	36.96
40 X 40 X 20	AD0424LS-C50	S	24	0.06	1.44	6000	7.5	0.154	23.9	28	0,6	UL,CUL,TUV,CE	500	36.96
40 X 40 X 20	AD0424MS-C50	S	24	0.07	1.68	6700	8.3	0.180	27.5	28	0,6	UL,CUL,TUV,CE	500	36.96
40 X 40 X 20	AD0424HS-C50	S	24	0.09	2.16	7500	9.6	0.240	31.0	27	0,6	UL,CUL,TUV,CE	500	36.96
45 X 45 X 6	AD4505LX-K90	HYPRO	5	0.10	0.50	4300	6.2	0.056	23.0	24	0	CE	560	19.30
45 X 45 X 6	AD4505MX-K90	HYPRO	5	0.12	0.60	5000	7.1	0.074	25.5	24	0,6	CE	560	19.30
45 X 45 X 6	AD4505HX-K90	HYPRO	5	0.14	0.70	6000	9.2	0.103	32.6	24	0,6	CE	560	19.30
45 X 45 X 6	AD4505LB-K90(S)	1B & 1S	5	0.10	0.50	4500	6.5	0.059	23.3	24	0,6	CE	560	19.30
45 X 45 X 6	AD4505MB-K90(S)	1B & 1S	5	0.12	0.60	5500	7.2	0.085	26.5	24	0,6	CE	560	19.30
45 X 45 X 6	AD4505HB-K90(S)	1B & 1S	5	0.14	0.70	6200	9.5	0.111	33.0	24	0,6	CE	560	19.30
45 X 45 X 6	AD4512LX-K90	HYPRO	12	0.08	0.96	4300	6.2	0.056	23.0	24	0,6	CE	560	19.30
45 X 45 X 6	AD4512MX-K90	HYPRO	12	0.09	1.08	5000	7.1	0.074	25.5	24	0,6	CE	560	19.30
45 X 45 X 6	AD4512HX-K90	HYPRO	12	0.10	1.20	6000	9.2	0.103	32.6	24	0,6	CE	560	19.30
45 X 45 X 6	AD4512LB-K90(S)	1B & 1S	12	0.08	0.96	4500	6.5	0.059	23.3	24	0,6	CE	560	19.30
45 X 45 X 6	AD4512MB-K90(S)	1B & 1S	12	0.09	1.08	5500	7.2	0.085	26.5	24	0	CE	560	19.30
45 X 45 X 6	AD4512HB-K90(S)	1B & 1S	12	0.10	1.20	6200	9.5	0.111	33.0	24	0,6	CE	560	19.30
45 X 45 X 7	AD4505MX-QA0	HYPRO	5	0.09	0.45	5000	1.6	0.224	25.5	23	0	CE	480	
45 X 45 X 7	AD4505HX-QA0	HYPRO	5	0.14	0.70	5700	1.8	0.332	28.5	23	0,6	CE	480	
45 X 45 X 7	AD4505HX-QA3	HYPRO	5	0.12	0.60	6200	2.1	0.397	31.2	23	3	CE	480	
45 X 45 X 7	AD4505HB-QA3	BALL	5	0.12	0.60	6200	2.1	0.397	31.2	23	3	CE	480	
45 X 45 X 9	AD4505HX-RB3	HYPRO	5	0.22	1.10	4500	3.1	0.213	31.8	26	3	CE	500	
45 X 45 X 10	AD4505LX-G70(T)	HYPRO	5	0.16	0.80	3800	6.8	0.062	17.5	24	0,6	UL,CUL,TUV,CE	500	24.64
45 X 45 X 10	AD4505MX-G70	HYPRO	5	0.10	0.50	4200	6.9	0.069	21.6	24	0,6	CE	500	24.64
45 X 45 X 10	AD4505MX-G70(T)	HYPRO	5	0.18	0.90	4500	7.5	0.078	22.0	24	0,6	UL,CUL,TUV,CE	500	24.64
45 X 45 X 10	AD4505MX-GD0	HYPRO	5	0.25	1.25	4200	2.0	0.290	22.0	26	0,6	CE	500	24.64
45 X 45 X 10	AD4505MX-GD1	HYPRO	5	0.15	0.75	5000	2.3	0.342	31.1	26	1	CE	500	24.64
45 X 45 X 10	AD4505HX-G70	HYPRO	5	0.20	1.00	5500	9.1	0.107	27.4	24	0	UL,CUL,TUV,CE	500	24.64
45 X 45 X 10	AD4505HX-G76	HYPRO	5	0.20	1.00	5500	9.1	0.109	28.6	24	6	CE	500	24.64
45 X 45 X 10	AD4505HX-GD0	HYPRO	5	0.22	1.10	5200	2.7	0.434	27.4	26	0,3	CE	500	24.64
45 X 45 X 10	AD4505HX-GD1	HYPRO	5	0.17	0.85	4800	7.0	0.050	28.9	26	1	CE	500	24.64

NOTE B=Ball S=Sleeve X=Hypro AT= Terminals AW= Wires

ALL RIGHTS RESERVED

**ADDA USA
DC FAN SPECIFICATIONS**

Frame Dimensions (mm)	Model Part Number	Bearing Type	Volts (V)	Current (A)	Power (W)	Speed (RPM)	Air Flow (CFM)	Pressure (Inches)	Noise (dB/A)	Weight (g)	Features Available	Safety Approvals	Units Per Box	Box Wt. (lbs.)
45 X 45 X 10	AD4505LB--G70	BALL	5	0.16	0.80	4200	7.0	0.066	20.4	24	0,6	UL,CUL,TUV,CE	500	24.64
45 X 45 X 10	AD4505MB-G70	BALL	5	0.16	0.80	4200	6.9	0.069	21.6	24	0	CE	500	24.64
45 X 45 X 10	AD4505MB-G76	BALL	5	0.18	0.90	4500	7.5	0.078	22.0	24	6	UL,CUL,TUV,CE	500	24.64
45 X 45 X 10	AD4505MB-GD0	BALL	5	0.25	1.25	4200	2.0	0.290	22.0	26	0,6	CE	500	24.64
45 X 45 X 10	AD4505HB-G70	BALL	5	0.20	1.00	5000	8.2	0.101	26.2	24	0	CE	500	24.64
45 X 45 X 10	AD4505HB-G70(S)	1B & 1S	5	0.20	1.00	5500	9.8	0.116	27.5	24	0	UL,CUL,TUV,CE	500	24.64
45 X 45 X 10	AD4505HB-G70(T)	BALL	5	0.20	1.00	5500	9.1	0.107	27.4	24	0,6	CE	500	24.64
45 X 45 X 10	AD4505HB-GD0	BALL	5	0.22	1.10	5200	2.7	0.434	35.3	26	0,6	CE	500	24.64
45 X 45 X 10	AD4505LS-G70(T)	S	5	0.16	0.80	3800	6.8	0.062	17.5	24	0,6	UL,CUL,TUV,CE	500	24.64
45 X 45 X 10	AD4505MS-G70	S	5	0.16	0.80	4200	6.9	0.069	21.6	24	0	CE	500	24.64
45 X 45 X 10	AD4505MS-G76	S	5	0.18	0.90	4500	7.5	0.078	22.0	24	6	UL,CUL,TUV,CE	500	24.64
45 X 45 X 10	AD4505HS-G70	S	5	0.20	1.00	5500	9.1	0.107	27.4	24	0,6	UL,CUL,TUV,CE	500	24.64
45 X 45 X 10	AD4505HS-GD0(Y)	S	5	0.22	1.10	5200	2.7	0.434	35.3	26	0,6	UL,CUL,TUV,CE	500	24.64
45 X 45 X 10	AD4512LX-G70(T)	HYPRO	12	0.06	0.72	3800	6.8	0.062	17.5	24	0,6	UL,CUL,TUV,CE	500	24.64
45 X 45 X 10	AD4512MX-G70	HYPRO	12	0.07	0.84	4200	6.9	0.069	21.6	24	0,6	UL,CUL,TUV,CE	500	24.64
45 X 45 X 10	AD4512MX-G70(T)	HYPRO	12	0.07	0.84	4500	7.5	0.078	22.0	24	0,6	UL,CUL,TUV,CE	500	24.64
45 X 45 X 10	AD4512HX-G70	HYPRO	12	0.09	1.08	6500	10.4	0.145	31.6	24	0,6	UL,CUL,TUV,CE	500	24.64
45 X 45 X 10	AD4512HX-G70(T)	HYPRO	12	0.09	1.08	5500	9.1	0.107	27.4	24	0,6	UL,CUL,TUV,CE	500	24.64
45 X 45 X 10	AD4512LB-G70	BALL	12	0.06	0.72	4200	7.0	0.066	20.4	24	0,6	UL,CUL,TUV,CE	500	24.64
45 X 45 X 10	AD4512MB-G70	Bor1B1S	12	0.07	0.84	4200	6.9	0.069	21.6	24	0,6	UL,CUL,TUV,CE	500	24.64
45 X 45 X 10	AD4512MB-G70(T)	BALL	12	0.07	0.84	4500	7.5	0.078	22.0	24	0,6	UL,CUL,TUV,CE	500	24.64
45 X 45 X 10	AD4512MB-G72(S)	1B & 1S	12	0.08	0.96	4800	7.9	0.081	23.7	24	2	CE	500	24.64
45 X 45 X 10	AD4512HB-G70	Bor1B1S	12	0.09	1.08	5000	8.3	0.097	26.1	24	0,6	UL,CUL,TUV,CE	500	24.64
45 X 45 X 10	AD4512HB-G70(T)	BALL	12	0.09	1.08	5500	9.1	0.107	27.4	24	0,6	UL,CUL,TUV,CE	500	24.64
45 X 45 X 10	AD4512LS-G70(T)	S	12	0.06	0.72	3800	6.8	0.062	17.5	24	0,6	UL,CUL,TUV,CE	500	24.64
45 X 45 X 10	AD4512MS-G70	S	12	0.07	0.84	4200	6.9	0.069	21.6	24	0	CE	500	24.64
45 X 45 X 10	AD4512MS-G76	S	12	0.07	0.84	4200	6.9	0.069	21.6	24	6	UL,CUL,TUV,CE	500	24.64
45 X 45 X 10	AD4512MS-G70(T)	S	12	0.07	0.84	4500	7.5	0.078	22.0	24	0,6	UL,CUL,TUV,CE	500	24.64
45 X 45 X 10	AD4512HS-G70	S	12	0.09	1.08	5000	8.3	0.097	26.1	24	0	UL,CUL,TUV,CE	500	24.64
45 X 45 X 10	AD4512HS-G70(T)	S	12	0.09	1.08	5500	9.1	0.109	28.6	24	0,6	UL,CUL,TUV,CE	500	24.64
45 X 45 X 10	AD4524LX-G70(T)	HYPRO	24	0.06	1.44	3800	6.8	0.062	17.5	24	0,6	UL,CUL,TUV,CE	500	24.64
45 X 45 X 10	AD4524MX-G70(T)	HYPRO	24	0.07	1.68	4800	7.5	0.078	22.0	24	0,6	UL,CUL,TUV,CE	500	24.64
45 X 45 X 10	AD4524HX-G70(T)	HYPRO	24	0.08	1.92	5500	9.1	0.109	28.6	24	0,6	UL,CUL,TUV,CE	500	24.64
45 X 45 X 10	AD4524LB-G70(T)	BALL	24	0.06	1.44	3800	6.8	0.062	17.5	24	0,6	UL,CUL,TUV,CE	500	24.64
45 X 45 X 10	AD4524LB-G70(S)	BALL	24	0.06	1.44	4200	7.0	0.066	20.4	24	0,6	UL,CUL,TUV,CE	500	24.64
45 X 45 X 10	AD4524MB-G70(T)	BALL	24	0.09	2.16	4500	7.5	0.078	22.0	24	0,6	UL,CUL,TUV,CE	500	24.64
45 X 45 X 10	AD4524MB-G70(S)	BALL	24	0.07	1.68	4800	7.9	0.081	23.7	24	0,6	UL,CUL,TUV,CE	500	24.64
45 X 45 X 10	AD4524HB-G70(T)	BALL	24	0.08	1.92	5500	9.1	0.109	28.6	24	0,6	UL,CUL,TUV,CE	500	24.64
45 X 45 X 10	AD4524LS-G70(T)	BALL	24	0.06	1.44	3800	6.8	0.062	17.5	24	0,6	UL,CUL,TUV,CE	500	24.64
45 X 45 X 10	AD4524MS-G70(T)	BALL	24	0.07	1.68	4800	7.5	0.078	22.0	24	0,6	UL,CUL,TUV,CE	500	24.64
45 X 45 X 10	AD4524HS-G70(T)	BALL	24	0.08	1.92	5500	9.1	0.109	28.6	24	0,6	UL,CUL,TUV,CE	500	24.64
45 X 45 X 10	AD4524HB-G70(S)	BALL	24	0.08	1.92	5700	9.8	0.107	27.4	24	0,6	UL,CUL,TUV,CE	500	24.64
50 X 50 X 15	AD5005MS-D70	S	5	0.24	1.20	4300	12.6	0.113	29.0	55	0	CE		

NOTE B=Ball S=Sleeve X=Hypro AT= Terminals AW= Wires

ALL RIGHTS RESERVED

**ADDA USA
DC FAN SPECIFICATIONS**

Frame Dimensions (mm)	Model Part Number	Bearing Type	Volts (V)	Current (A)	Power (W)	Speed (RPM)	Air Flow (CFM)	Pressure (Inches)	Noise (dB/A)	Weight (g)	Features Available	Safety Approvals	Units Per Box	Box Wt. (lbs.)
50 X 50 X 15	AD5012LX-D70	HYPRO	12	0.08	0.96	3600	10.8	0.084	23.6	55	0	CE		
50 X 50 X 15	AD5012MX-D70	HYPRO	12	0.10	1.20	4300	12.6	0.113	29.0	55	0	CE		
50 X 50 X 15	AD5012HX-D70	HYPRO	12	0.14	1.68	4800	14.4	0.141	30.7	55	0,6	CE		
50 X 50 X 15	AD5012UX-D76	HYPRO	12	0.20	2.40	5500	16.5	0.181	33.8	55	6	CE		
50 X 50 X 15	AD5012LB-D70	BALL	12	0.08	0.96	3600	10.8	0.084	23.6	55	0,6	CE		
50 X 50 X 15	AD5012MB-D70	BALL	12	0.10	1.20	4300	12.6	0.113	29.0	55	0,6	CE		
50 X 50 X 15	AD5012MB-D76(S)	1B & 1S	12	0.10	1.20	4500	28.5	0.126	13.4	55	6	CE		
50 X 50 X 15	AD5012HB-D70	BALL	12	0.14	1.68	4800	14.4	0.141	30.7	55	0,6	CE		
50 X 50 X 15	AD5012HB-D70(S)	1B & 1S	12	0.14	1.68	500	15.0	0.152	31.4	55	0,6	CE		
50 X 50 X 15	AD5012UB-D70	BALL	12	0.20	2.40	5500	16.5	0.181	33.8	55	0,6	CE		
50 X 50 X 15	AD5012UB-D70(S)	1B & 1S	12	0.20	2.40	5700	17.1	0.194	34.5	55	0,6	CE		
50 X 50 X 15	AD5012LS-D70	S	12	0.08	0.96	3600	10.8	0.084	23.6	55	0	CE		
50 X 50 X 15	AD5012MS-D70	S	12	0.10	1.20	4300	12.6	0.113	29.0	55	0,6	CE		
50 X 50 X 15	AD5012HS-D76	S	12	0.14	1.68	4800	14.4	0.141	30.7	55	6	CE		
50 X 50 X 15	AD5012US-D76	S	12	0.20	2.40	5500	16.5	0.181	33.8	55	6	CE		
52 X 52 X 9	AD0505MX-RB1	HYPRO	5	0.17	0.85	4800	3.0	0.320	34.0	28	0,3	CE		
52 X 52 X 9	AD0505HX-RB0	HYPRO	5	0.22	1.10	5000	3.2	0.320	34.0	28	0,3	CE		
52 X 52 X 9	AD0505HX-RB1	HYPRO	5	0.22	1.10	5000	9.5	0.100	31.7	28	1	CE		
52 X 52 X 9	AD0505MB-RB1	BALL	5	0.17	0.85	4800	3.0	0.320	34.0	28	1	CE		
52 X 52 X 9	AD0512MX-RB0	HYPRO	12	0.10	1.20	4800	3.0	0.320	34.0	28	0	CE		
52 X 52 X 10	AD0505LX-G70(T)	HYPRO	5	0.12	0.60	3700	9.0	0.060	20.0	18	0,6	UL,CUL,TUV,CE		
52 X 52 X 10	AD0505MX-G70	HYPRO	5	0.18	0.90	4300	10.5	0.100	24.0	18	0,6	UL,CUL,TUV,CE		
52 X 52 X 10	AD0505MX-G90	HYPRO	5	0.12	0.60	3300	8.5	0.068	24.9	24	0	UL,CUL,CE		
52 X 52 X 10	AD0505HX-G70(T)	HYPRO	5	0.23	1.15	5000	11.2	0.130	26.0	18	0,6	UL,CUL,TUV,CE		
52 X 52 X 10	AD0505HX-G90	HYPRO	5	0.15	0.75	3800	9.8	0.082	28.6	50	0	UL,CUL,CE		
52 X 52 X 10	AD0505LB-G70(T)	BALL	5	0.12	0.60	3700	9.0	0.060	20.0	18	0,6	UL,CUL,TUV,CE		
52 X 52 X 10	AD0505LB-G70(TS)	1B & 1S	5	0.12	0.60	3900	9.4	0.060	20.0	18	0,6	UL,CUL,TUV,CE		
52 X 52 X 10	AD0505MB-G70	BALL	5	0.14	0.70	4600	10.5	0.100	24.0	18	0	CE		
52 X 52 X 10	AD0505MB-G70(T)	BALL	5	0.18	0.90	4300	10.5	0.100	24.0	18	0,6	UL,CUL,TUV,CE		
52 X 52 X 10	AD0505MB-G70(TS)	1B & 1S	5	0.18	0.90	4500	10.8	0.100	25.0	18	0,6	UL,CUL,TUV,CE		
52 X 52 X 10	AD0505HB-G70(T)	BALL	5	0.23	1.15	5000	11.2	0.130	26.0	18	0,6	UL,CUL,TUV,CE		
52 X 52 X 10	AD0505HB-G90	BALL	5	0.15	0.75	3800	9.8	0.082	28.6	24	0	UL,CUL,CE		
52 X 52 X 10	AD0505HB-G96	BALL	5	0.15	0.75	3800	9.8	0.082	28.6	24	6	CE		
52 X 52 X 10	AD0505LS-G70	S	5	0.12	0.60	3700	9.0	0.060	20.0	18	0	TUV,CE		
52 X 52 X 10	AD0505LS-G76	S	5	0.12	0.60	3700	9.0	0.060	20.0	18	0	UL,CUL,TUV,CE		
52 X 52 X 10	AD0505MS-G70(T)	S	5	0.18	0.90	4300	10.5	0.100	24.0	18	0,6	UL,CUL,TUV,CE		
52 X 52 X 10	AD0505MS-G90	S	5	0.12	0.60	3300	8.5	0.068	24.9	24	0	UL,CUL,CE		
52 X 52 X 10	AD0505HS-G70	S	5	0.18	0.90	5200	11.9	0.130	28.0	18	0	UL,CUL,TUV,CE		
52 X 52 X 10	AD0505HS-G70(T)	S	5	0.23	1.15	500	11.2	0.130	26.0	18	0,6	UL,CUL,TUV,CE		
52 X 52 X 10	AD0512LX-G70(T)	HYPRO	12	0.10	0.72	3700	9.0	0.060	20.0	18	0,6	UL,CUL,TUV,CE		
52 X 52 X 10	AD0512MX-G70(T)	HYPRO	12	0.07	0.84	4300	10.5	0.100	24.0	18	0,6	UL,CUL,TUV,CE		
52 X 52 X 10	AD0512MX-G72	HYPRO	12	0.10	1.20	4300	10.5	0.100	24.0	18	2	CE		
52 X 52 X 10	AD0512MX-G90	HYPRO	12	0.07	0.84	3300	8.5	0.068	24.9	50	0	UL,CUL,CE		

NOTE B=Ball S=Sleeve X=Hypro AT= Terminals AW= Wires

ALL RIGHTS RESERVED

ADDA USA
DC FAN SPECIFICATIONS

Frame Dimensions (mm)	Model Part Number	Bearing Type	Volts (V)	Current (A)	Power (W)	Speed (RPM)	Air Flow (CFM)	Pressure (Inches)	Noise (dB/A)	Weight (g)	Features Available	Safety Approvals	Units Per Box	Box Wt. (lbs.)
52 X 52 X 10	AD0512HX-G70	HYPRO	12	0.09	1.08	5000	11.2	0.130	26.0	18	0,6	UL,CUL,TUV,CE		
52 X 52 X 10	AD0512HX-G76(UT	HYPRO	12	0.09	1.08	5600	12.4	0.112	26.4	18	6	CE		
52 X 52 X 10	AD0512HX-G90	HYPRO	12	0.08	0.96	3800	9.8	0.082	28.6	24	0	UL,CUL,CE		
52 X 52 X 10	AD0512LB-G70	BALL	12	0.06	0.72	3900	9.4	0.060	20.0	18	0,6	UL,CUL,TUV,CE		
52 X 52 X 10	AD0512LB-G72	BALL	12	0.09	1.08	3700	9.0	0.060	20.0	18	2	UL,CUL,TUV,CE		
52 X 52 X 10	AD0512LB-G73	BALL	12	0.06	0.72	3900	9.4	0.067	20.0	18	3	CE		
52 X 52 X 10	AD0512MB-G70(S)	Bor1B1S	12	0.07	0.84	4600	10.5	0.100	24.0	18	0,6	UL,CUL,TUV,CE		
52 X 52 X 10	AD0512MB-G73	BALL	12	0.10	1.20	4300	10.5	0.100	24.0	18	3	CE		
52 X 52 X 10	AD0512MB-G90(S)	Bor1B1S	12	0.07	0.84	3300	8.5	0.068	24.9	24	0	UL,CUL,CE		
52 X 52 X 10	AD0512MB-G96(S)	1B & 1S	12	0.07	0.84	3300	8.5	0.068	24.9	24	6	CE		
52 X 52 X 10	AD0512HB-G70(S)	Bor1B1S	12	0.09	1.08	5200	11.9	0.130	28.0	18	0	UL,CUL,TUV,CE		
52 X 52 X 10	AD0512HB-G72	BALL	12	0.11	1.32	5000	11.2	0.130	26.0	18	2	CE		
52 X 52 X 10	AD0512HB-G73(S)	1B & 1S	12	0.09	1.08	5200	11.9	0.130	28.0	18	3	CE		
52 X 52 X 10	AD0512HB-G76	BALL	12	0.09	1.08	5000	11.2	0.130	26.0	18	6	UL,CUL,TUV,CE		
52 X 52 X 10	AD0512HB-G90(S)	Bor1B1S	12	0.08	0.96	3800	9.8	0.082	28.6	24	0	UL,CUL,CE		
52 X 52 X 10	AD0512LS-G70	S	12	0.06	0.72	3700	9.0	0.060	20.0	18	0,6	UL,CUL,TUV,CE		
52 X 52 X 10	AD0512MS-G70	S	12	0.07	0.84	4600	10.5	0.100	24.0	18	0,6	UL,CUL,TUV,CE		
52 X 52 X 10	AD0512MS-G90	S	12	0.08	0.96	3300	8.5	0.068	24.9	24	0,6	UL,CUL,CE		
52 X 52 X 10	AD0512HS-G70	S	12	0.09	1.08	5200	11.9	0.130	28.0	18	0	CE		
52 X 52 X 10	AD0512HS-G70(T)	S	12	0.09	1.08	5000	11.2	0.130	26.0	18	0,6	UL,CUL,TUV,CE		
52 X 52 X 10	AD0512HS-G70(U)	S	12	0.09	1.08	5600	12.4	0.112	26.4	18	0,6	UL,CUL,TUV,CE		
52 X 52 X 10	AD0512HS-G90	S	12	0.08	0.96	3800	9.8	0.082	28.6	24	0	UL,CUL,CE		
52 X 52 X 10	AD0512HS-G96	S	12	0.08	0.96	3800	9.8	0.082	28.6	24	6	CE		
52 X 52 X 10	AD0524LX-G70	HYPRO	24	0.07	1.68	3700	9.0	0.060	20.0	18	0,6	UL,CUL,TUV,CE		
52 X 52 X 10	AD0524MX-G70	HYPRO	24	0.08	1.92	4300	10.5	0.100	24.0	18	0,6	UL,CUL,TUV,CE		
52 X 52 X 10	AD0524HX-G70	HYPRO	24	0.09	2.16	5000	11.2	0.130	26.0	18	0,6	UL,CUL,TUV,CE		
52 X 52 X 10	AD0524LB-G70	BALL	24	0.07	1.68	3700	9.0	0.060	20.0	18	0,6	UL,CUL,TUV,CE		
52 X 52 X 10	AD0524LB-G70(S)	1B & 1S	24	0.07	1.68	3900	9.4	0.060	20.0	18	0,6	UL,CUL,TUV,CE		
52 X 52 X 10	AD0524MB-G70(S)	Bor1B1S	24	0.10	2.40	4300	10.5	0.100	24.0	18	0,6	UL,CUL,TUV,CE		
52 X 52 X 10	AD0524MB-G90	BALL	24	0.06	1.44	3300	8.3	1.650	27.5	50	0	CE		
52 X 52 X 10	AD0524HB-G70	BALL	24	0.11	2.64	5000	11.2	0.130	26.0	18	0,6	CE		
52 X 52 X 10	AD0524HB-G70(S)	1B & 1S	24	0.09	2.16	5200	11.8	0.130	27.0	18	0,6	CE		
52 X 52 X 10	AD0524HB-G90	BALL	24	0.09	2.16	3800	9.8	0.082	28.6	50	0	CE		
52 X 52 X 10	AD0524LS-G70	S	24	0.07	1.68	3700	9.0	0.060	20.0	18	0,6	UL,CUL,TUV,CE		
52 X 52 X 10	AD0524MS-G70	S	24	0.08	1.92	4300	10.5	0.100	24.0	18	0	UL,CUL,TUV,CE		
52 X 52 X 10	AD0524HS-G70	S	24	0.09	2.16	5000	11.2	0.130	26.0	18	0,6	UL,CUL,TUV,CE		
52 X 52 X 15	AD0505HX-D71	HYPRO	5	0.26	1.30	4600	12.0	0.166	28.7	36	1	UL,CUL,TUV,CE	480	46.20
52 X 52 X 15	AD0505MB-D71	BALL	5	0.16	0.80	3700	9.7	0.106	22.6	55	1	CUL,UL,TUV,CE	480	46.20
52 X 52 X 15	AD0505HB-D70	BALL	5	0.20	1.00	4600	12.0	0.166	28.7	36	0	CUL,UL,TUV,CE	480	46.20
52 X 52 X 15	AD0505HB-D71	BALL	5	0.26	1.30	4600	12.0	0.166	28.7	36	1	CUL,UL,TUV,CE	480	46.20
52 X 52 X 15	AD0505MS-D71	S	5	0.16	0.80	3700	9.7	0.106	22.6	36	1	CUL,UL,TUV,CE	480	46.20
52 X 52 X 15	AD0505HS-D70	S	5	0.20	1.00	4600	12.0	0.166	28.7	55	0	CUL,UL,TUV,CE	480	46.20
52 X 52 X 15	AD0505HS-D71	S	5	0.26	1.30	4600	12.0	0.166	28.7	36	1	CUL,UL,TUV,CE	480	46.20

NOTE B=Ball S=Sleeve X=Hypro AT= Terminals AW= Wires

ALL RIGHTS RESERVED

ADDA USA
DC FAN SPECIFICATIONS

Frame Dimensions (mm)	Model Part Number	Bearing Type	Volts (V)	Current (A)	Power (W)	Speed (RPM)	Air Flow (CFM)	Pressure (Inches)	Noise (dB/A)	Weight (g)	Features Available	Safety Approvals	Units Per Box	Box Wt. (lbs.)
52 X 52 X 15	AD0512MX-D70	HYPRO	12	0.09	1.08	3700	9.7	0.106	22.6	55	0	UL,CUL,CE	480	46.20
52 X 52 X 15	AD0512MX-D71	HYPRO	12	0.09	1.08	3700	9.7	0.106	22.6	36	1	UL,CUL,TUV,CE	480	46.20
52 X 52 X 15	AD0512MX-D72	HYPRO	12	0.09	1.08	3700	9.7	0.106	22.6	36	2	CE+	480	46.20
52 X 52 X 15	AD0512HX-D71	HYPRO	12	0.10	1.20	4600	12.0	0.166	28.7	36	1	UL,CUL,TUV,CE	480	46.20
52 X 52 X 15	AD0512HX-D76	HYPRO	12	0.10	1.20	4600	12.0	0.166	28.7	36	6	CE	480	46.20
52 X 52 X 15	AD0512LB-D70	BALL	12	0.06	0.72	2800	6.3	0.059	14.4	55	0	CE	480	46.20
52 X 52 X 15	AD0512MB-D70	BALL	12	0.09	1.08	3700	9.7	0.106	22.6	55	0,6	UL,CUL,CE	480	46.20
52 X 52 X 15	AD0512MB-D71(S)	Bor1B1S	12	0.09	1.08	3700	9.7	0.106	22.6	36	1	UL,CUL,TUV,CE	480	46.20
52 X 52 X 15	AD0512MB-D72	BALL	12	0.09	1.08	3700	9.7	0.106	22.6	36	2,3	CE	480	46.20
52 X 52 X 15	AD0512HB-D70	BALL	12	0.10	1.20	4600	12.0	0.166	28.7	55	0	UL,CUL,CE	480	46.20
52 X 52 X 15	AD0512HB-D71	Bor1B1S	12	0.10	1.20	4600	12.0	0.166	28.7	36	1	UL,CUL,TUV,CE	480	46.20
52 X 52 X 15	AD0512HB-D73	Bor1B1S	12	0.10	1.20	4600	12.0	0.166	28.7	36	3,6	CE	480	46.20
53 X 52 X 15	AD0512UB-D71	BALL	12	0.11	1.32	5300	13.0	0.200	35.0	36	1	CE	480	46.20
54 X 52 X 15	AD0512UB-D72	BALL	12	0.11	1.32	5300	12.5	0.200	33.3	36	2	CE	480	46.20
52 X 52 X 15	AD0512MS-D70	S	12	0.09	1.08	3700	9.7	0.106	22.6	55	0	UL,CUL,CE	480	46.20
52 X 52 X 15	AD0512MS-D71	S	12	0.09	1.08	3700	9.7	0.106	22.6	36	1	UL,CUL,TUV,CE	480	46.20
52 X 52 X 15	AD0512HS-D70	S	12	0.10	1.20	4600	12.0	0.166	28.7	55	0	UL,CUL,CE	480	46.20
52 X 52 X 15	AD0512HS-D71	S	12	0.10	1.20	4600	12.0	0.166	28.7	36	1	UL,CUL,TUV,CE	480	46.20
52 X 52 X 15	AD0512HS-D76	S	12	0.10	1.20	4600	12.0	0.166	28.7	36	6	CE	480	46.20
52 X 52 X 15	AD0524HX-D71	HYPRO	24	0.08	1.92	4600	12.0	0.166	28.7	36	1	CE	480	46.20
52 X 52 X 15	AD0524HB-D71	BALL	24	0.08	1.92	4600	12.0	0.166	28.7	55	1	CE	480	46.20
52 X 52 X 15	AD0524HS-D71	S	24	0.08	1.92	4600	12.0	0.166	28.7	36	1	CE	480	46.20
60 X 60 X 10	AD0605LX-G90	HYPRO	5	0.15	0.75	3000	11.9	0.060	23.1	30	0	UL,CUL,CE	480	35.50
60 X 60 X 10	AD0605LX-G70	HYPRO	5	0.13	0.65	3500	10.0	0.060	23.0	30	0	CE	480	35.50
60 X 60 X 10	AD0605MX-G70	HYPRO	5	0.15	0.75	4200	12.0	0.090	28.0	23	0	TUV,CE	480	35.50
60 X 60 X 10	AD0605LB-G70	BALL	5	0.13	0.65	3500	10.0	0.060	23.0	30	0	CE	480	35.50
60 X 60 X 10	AD0605MB-G70	BALL	5	0.15	0.75	4200	12.0	0.090	28.0	23	0	TUV,CE	480	35.50
60 X 60 X 10	AD0605HB-G90	BALL	5	0.27	1.35	4200	16.6	0.115	32.8	30	0	UL,CUL,CE	480	35.50
60 X 60 X 10	AD0605LS-G70	S	5	0.13	0.65	3500	10.0	0.060	23.0	23	0	TUV,CE	480	35.50
60 X 60 X 10	AD0605LS-G90	S	5	0.14	0.70	3000	11.9	0.060	23.1	30	0	UL,CUL,CE	480	35.50
60 X 60 X 10	AD0605MS-G70	S	5	0.15	0.75	4200	12.0	0.090	28.0	23	0	TUV,CE	480	35.50
60 X 60 X 10	AD0605HS-G90	S	5	0.27	1.35	4200	16.6	0.115	32.8	30	0	UL,CUL,TUV,CE	480	35.50
60 X 60 X 10	AD0612LX-G70	HYPRO	12	0.11	1.32	3500	11.7	0.050	23.0	30	0	TUV,CE	480	35.50
60 X 60 X 10	AD0612LX-G76	HYPRO	12	0.11	1.32	3500	11.7	0.050	23.0	30	6	CE	480	35.50
60 X 60 X 10	AD0612MX-G70	HYPRO	12	0.13	1.56	4200	12.0	0.090	28.0	23	0,6	TUV,CE	480	35.50
60 X 60 X 10	AD0612MX-G90	HYPRO	12	0.12	1.44	3600	14.1	0.086	28.5	30	0,6	UL,CUL,CE	480	35.50
60 X 60 X 10	AD0612MX-G96	HYPRO	12	0.12	1.44	3600	14.1	0.086	28.5	30	6	CE	480	35.50
60 X 60 X 10	AD0612HX-G70	HYPRO	12	0.15	1.80	4900	14.5	0.108	32.0	23	0,6	TUV,CE	480	35.50
60 X 60 X 10	AD0612HX-G90	HYPRO	12	0.14	1.68	4200	16.6	0.115	32.8	30	0	UL,CUL,TUV,CE	480	35.50
60 X 60 X 10	AD0612LB-G70(S)	Bor1B1S	12	0.11	1.32	3500	11.7	0.050	23.0	30	0,6	TUV,CE	480	35.50
60 X 60 X 10	AD0612LB-G90	BALL	12	0.11	1.32	3000	11.9	0.060	23.1	30	0	UL,CUL,CE	480	35.50
60 X 60 X 10	AD0612LB-G96	BALL	12	0.11	1.32	3000	11.9	0.060	23.1	30	6	TUV,CE	480	35.50
60 X 60 X 10	AD0612MB-G70(S)	Bor1B1S	12	0.13	1.56	4200	12.0	0.090	28.0	23	0,6	TUV,CE	480	35.50

NOTE B=Ball S=Sleeve X=Hypro AT= Terminals AW= Wires

ALL RIGHTS RESERVED

**ADDA USA
DC FAN SPECIFICATIONS**

Frame Dimensions (mm)	Model Part Number	Bearing Type	Volts (V)	Current (A)	Power (W)	Speed (RPM)	Air Flow (CFM)	Pressure (Inches)	Noise (dB/A)	Weight (g)	Features Available	Safety Approvals	Units Per Box	Box Wt. (lbs.)
60 X 60 X 10	AD0612MB-G90(S)	Bor1B1S	12	0.12	1.44	3600	14.1	0.086	28.5	30	0,6	UL,CUL,TUV,CE	480	35.50
60 X 60 X 10	AD0612MB-GA6	BALL	12	0.19	2.28	4000	17.3	0.127	31.7	30	6	UL,CUL,TUV,CE	480	35.50
60 X 60 X 10	AD0612HB-G70(S)	Bor1B1S	12	0.15	1.80	4900	14.5	0.108	32.0	23	0,6	TUV,CE	480	35.50
60 X 60 X 10	AD0612HB-G90(S)	Bor1B1S	12	0.14	1.68	4200	16.6	0.115	32.8	30	0	UL,CUL,TUV,CE	480	35.50
60 X 60 X 10	AD0612HB-G96(S)	1B & 1S	12	0.14	1.68	4200	16.6	0.115	32.8	30	6	CE	480	35.50
60 X 60 X 10	AD0612HB-GA6(S)	1B & 1S	12	0.25	3.00	4600	21.0	0.165	35.8	30	6	UL,CUL,TUV,CE	480	35.50
60 X 60 X 10	AD0612LS-G70	S	12	0.11	1.32	3500	11.7	0.050	23.0	23	0	TUV,CE	480	35.50
60 X 60 X 10	AD0612LS-G90	S	12	0.11	1.32	300	11.9	0.060	23.1	30	0	UL,CUL,CE	480	35.50
60 X 60 X 10	AD0612LS-G96	S	12	0.11	1.32	300	11.9	0.060	23.1	30	6	UL,CUL,TUV,CE	480	35.50
60 X 60 X 10	AD0612MS-G70	S	12	0.13	1.56	4200	12.0	0.090	28.0	23	0,6	TUV,CE	480	35.50
60 X 60 X 10	AD0612HS-G90	S	12	0.15	1.80	4900	14.5	0.108	32.0	23	0	TUV,CE	480	35.50
60 X 60 X 10	AD0612HS-G96	S	12	0.15	1.80	4900	14.5	0.108	32.0	23	6	UL,CUL,TUV,CE	480	35.50
60 X 60 X 10	AD0612HS-G90	S	12	0.14	1.68	4200	16.6	0.115	32.8	30	0	UL,CUL,CE	480	35.50
60 X 60 X 10	AD0612HS-G96	S	12	0.14	1.68	4200	16.6	0.115	32.8	30	6	CE	480	35.50
60 X 60 X 15	AD0605LB-D70GL	BALL	5	0.20	1.00	3500	12.0	0.010	27.2	38	0,1	CE	300	25.70
60 X 60 X 15	AD0605MB-D71GL	BALL	5	0.25	1.25	3900	14.2	0.118	28.8	38	1,2,3	UL,CUL,TUV,CE	300	25.70
60 X 60 X 15	AD0605HB-D70GL	BALL	5	0.25	1.25	4500	15.7	0.163	33.2	38	0	CE	300	25.70
60 X 60 X 15	AD0605HB-D71GL	BALL	5	0.37	1.85	4500	16.6	0.152	32.4	38	1,2	UL,CUL,TUV,CE	300	25.70
60 X 60 X 15	AD0605HB-D73GL	BALL	5	0.37	1.85	4500	16.6	0.152	32.4	38	3	UL,CUL,CE	300	25.70
60 X 60 X 15	AD0605MS-D71GL	S	5	0.25	1.25	3900	14.2	0.118	28.8	38	1	UL,CUL,CE	300	25.70
60 X 60 X 15	AD0605HS-D70GL	S	5	0.25	1.25	4500	15.7	0.163	33.2	38	0	CE	300	25.70
60 X 60 X 15	AD0605HS-D71GL	S	5	0.37	1.85	4500	16.6	0.152	32.4	38	1	UL,CUL,TUV,CE	300	25.70
60 X 60 X 15	AD0612DX-D70GL	HYPRO	12	0.07	0.84	3100	12.2	0.086	24.9	38	0,6	UL,CUL,CE	300	25.70
60 X 60 X 15	AD0612LX-D70GL	HYPRO	12	0.09	1.08	3500	12.0	0.010	27.2	38	0	UL,CUL,TUV,CE	300	25.70
60 X 60 X 15	AD0612LX-D76GL	HYPRO	12	0.09	1.08	3500	12.0	0.010	27.2	38	6	UL,CUL,CE	300	25.70
60 X 60 X 15	AD0612MX-D70GL	HYPRO	12	0.11	1.32	3900	14.2	0.118	28.8	38	0,1,2,3	UL,CUL,TUV,CE	300	25.70
60 X 60 X 15	AD0612MX-D76GL	B,S,or X	12	0.11	1.32	3900	14.2	0.118	28.8	38	6	CE	300	25.70
60 X 60 X 15	AD0612HX-D70GL	HYPRO	12	0.13	1.56	4500	16.6	0.152	32.4	38	0,1,6	UL,CUL,TUV,CE	300	25.70
60 X 60 X 15	AD0612HX-D72GL	HYPRO	12	0.13	1.56	4500	16.6	0.152	32.4	38	2,3	UL,CUL,CE	300	25.70
60 X 60 X 15	AD0612DB-D70GL	BALL	12	0.07	0.84	3100	12.2	0.086	24.9	38	0,2	CE	300	25.70
60 X 60 X 15	AD0612DB-D70(T)	BALL	12	0.07	0.84	3100	10.7	0.086	23.8	38	0,6	UL,CUL,CE	300	25.70
60 X 60 X 15	AD0612LB-D70GL	BALL	12	0.09	1.08	3500	12.0	0.010	27.2	38	0,1	UL,CUL,TUV,CE	300	25.70
60 X 60 X 15	AD0612LB-D76GL	BALL	12	0.09	1.08	3500	12.0	0.010	27.2	38	6	UL,CUL,CE	300	25.70
60 X 60 X 15	AD0612MB-D70GL	BALL	12	0.11	1.32	3900	14.2	0.118	28.8	38	0,1,3	UL,CUL,TUV,CE	300	25.70
60 X 60 X 15	AD0612MB-D76GL	BALL	12	0.11	1.32	3900	14.2	0.118	28.8	38	6	UL,CUL,CE	300	25.70
60 X 60 X 15	AD0612HB-D70GL	BALL	12	0.13	1.56	4500	16.6	0.152	32.4	38	0,1,2,3,6	UL,CUL,TUV,CE	300	25.70
60 X 60 X 15	AD0612UB-D71GL	BALL	12	0.16	1.92	5100	18.0	0.176	39.3	38	1,2,6	UL,CUL,TUV,CE	300	25.70
60 X 60 X 15	AD0612UB-D73GL	BALL	12	0.16	1.92	5100	18.0	0.176	39.3	38	3	CE	300	25.70
60 X 60 X 15	AD0612UB-D96	BALL	12	0.31	3.72	6000	28.5	0.231	40.4	38	6	CE	300	25.70
60 X 60 X 15	AD0612LS-D70GL	S	12	0.09	1.08	3500	12.0	0.010	27.2	38	0,1	UL,CUL,TUV,CE	300	25.70
60 X 60 X 15	AD0612MS-D70GL	S	12	0.11	1.32	3900	14.2	0.118	28.8	38	0,1,6	UL,CUL,TUV,CE	300	25.70
60 X 60 X 15	AD0612MS-D72GL	S	12	0.11	1.32	3900	14.2	0.118	28.8	38	2	CE	300	25.70
60 X 60 X 15	AD0612HS-D70GL	S	12	0.13	1.56	4500	16.6	0.152	32.4	38	0,1,6	UL,CUL,TUV,CE	300	25.70

NOTE B=Ball S=Sleeve X=Hypro AT= Terminals AW= Wires

ALL RIGHTS RESERVED

**ADDA USA
DC FAN SPECIFICATIONS**

Frame Dimensions (mm)	Model Part Number	Bearing Type	Volts (V)	Current (A)	Power (W)	Speed (RPM)	Air Flow (CFM)	Pressure (Inches)	Noise (dB/A)	Weight (g)	Features Available	Safety Approvals	Units Per Box	Box Wt. (lbs.)
60 X 60 X 15	AD0612HS-D73GL	S	12	0.13	1.56	4500	16.6	0.152	32.4	38	3	CE	300	25.70
60 X 60 X 15	AD0624LX-D70GL	HYPRO	24	0.05	1.20	3500	12.0	0.010	27.2	38	0	CE	300	25.70
60 X 60 X 15	AD0624MX-D71GL	HYPRO	24	0.07	1.68	3900	15.0	0.138	30.7	38	1	CE	300	25.70
60 X 60 X 15	AD0624HX-D71GL	HYPRO	24	0.09	2.16	4500	17.0	0.173	33.3	38	1	TUV,CE	300	25.70
60 X 60 X 15	AD0624MB-D70GL	BALL	24	0.07	1.68	3900	15.0	0.138	30.7	38	0	UL,CUL,CE	300	25.70
60 X 60 X 15	AD0624MB-D71GL	BALL	24	0.07	1.68	3900	15.0	0.138	30.7	38	1	CE	300	25.70
60 X 60 X 15	AD0624MB-D72GL	BALL	24	0.07	1.68	3900	15.0	0.138	30.7	38	2	TUV,CE	300	25.70
60 X 60 X 15	AD0624HB-D70GL	BALL	24	0.09	2.16	4500	17.0	0.173	33.3	38	0,6	UL,CUL,CE	300	25.70
60 X 60 X 15	AD0624HB-D71GL	BALL	24	0.09	2.16	4500	17.0	0.173	33.3	38	1,2	TUV,CE	300	25.70
60 X 60 X 15	AD0624HB-D73GL	BALL	24	0.09	2.16	4500	17.0	0.173	33.3	38	3	CE	300	25.70
60 X 60 X 15	AD0624LS-D70GL	S	24	0.05	1.20	3500	13.0	0.110	27.2	38	0	CE	300	25.70
60 X 60 X 15	AD0624MS-D70GL	S	24	0.07	1.68	3900	15.0	0.138	30.7	38	0	UL,CUL,CE	300	25.70
60 X 60 X 15	AD0624MS-D71GL	S	24	0.07	1.68	3900	15.0	0.138	30.7	38	1	TUV,CE	300	25.70
60 X 60 X 15	AD0624HS-D70GL	S	24	0.09	2.16	4500	17.0	0.173	33.3	38	0	UL,CUL,CE	300	25.70
60 X 60 X 15	AD0624HS-D71GL	S	24	0.09	2.16	4500	17.0	0.173	33.3	38	1	TUV,CE	300	25.70
60 X 60 X 20	AD0605HX-C70GL	HYPRO	5	0.25	1.25	4500	16.3	0.156	29.8	49	0	CE	300	40.00
60 X 60 X 20	AD0605MB-C70GL	BALL	5	0.24	1.20	3900	14.5	0.111	25.7	49	0	CE	300	40.00
60 X 60 X 20	AD0605HB-C70GL	BALL	5	0.30	1.50	4500	16.4	0.139	29.7	49	0	TUV,CE	300	40.00
60 X 60 X 20	AD0605HB-C72GL	BALL	5	0.30	1.50	4500	16.4	0.139	29.7	49	2	CE	300	40.00
60 X 60 X 20	AD0605HS-C70GL	HYPRO	5	0.30	1.50	4500	16.4	0.139	29.7	49	0	CE	300	40.00
60 X 60 X 20	AD0612DX-C76GL	HYPRO	12	0.07	0.84	3000	10.7	0.054	18.4	49	6	CE	300	40.00
60 X 60 X 20	AD0612LX-C70GL	HYPRO	12	0.08	0.96	3500	13.3	0.096	21.6	49	0,6	UL,CSA,CE	300	40.00
60 X 60 X 20	AD0612MX-C70GL	HYPRO	12	0.13	1.56	3900	14.5	0.111	25.7	49	0	UL,TUV,CSA,CE	300	40.00
60 X 60 X 20	AD0612MX-C72GL	HYPRO	12	0.13	1.56	3900	14.5	0.111	25.7	49	2,3,6	UL,CUL,CE	300	40.00
60 X 60 X 20	AD0612HX-C70GL	HYPRO	12	0.16	1.92	4500	16.4	0.139	29.7	49	0	UL,TUV,CSA,CE	300	40.00
60 X 60 X 20	AD0612HX-C72GL	HYPRO	12	0.16	1.92	4500	16.4	0.139	29.7	49	2	CE	300	40.00
60 X 60 X 20	AD0612HX-C73GL	HYPRO	12	0.16	1.92	4500	16.4	0.139	29.7	49	3,6	UL,CUL,CE	300	40.00
60 X 60 X 20	AD0612DB-C76GL	BALL	12	0.07	0.84	3000	10.7	0.054	18.4	49	6	CE	300	40.00
60 X 60 X 20	AD0612LB-C70GL	BALL	12	0.08	0.96	3500	13.3	0.096	21.6	49	0,1	UL,TUV,CSA,CE	300	40.00
60 X 60 X 20	AD0612LB-C73GL	BALL	12	0.08	0.96	3500	13.3	0.096	21.6	49	3	CE	300	40.00
60 X 60 X 20	AD0612LB-C76GL	BALL	12	0.08	0.96	3500	13.3	0.096	21.6	49	6	UL,CUL,CE	300	40.00
60 X 60 X 20	AD0612MB-C70GL	BALL	12	0.13	1.56	3900	14.5	0.111	25.7	49	0,3	UL,TUV,CSA,CE	300	40.00
60 X 60 X 20	AD0612MB-C72GL	BALL	12	0.13	1.56	3900	14.5	0.111	25.7	49	2,6	UL,CUL,CE	300	40.00
60 X 60 X 20	AD0612HB-C70GL	BALL	12	0.16	1.92	4600	16.4	0.139	29.7	49	0,1,6	UL,TUV,CSA,CE	300	40.00
60 X 60 X 20	AD0612HB-C72GL	BALL	12	0.16	1.92	4600	16.4	0.139	29.7	49	2,3	UL,CUL,CE	300	40.00
60 X 60 X 20	AD0612UB-C71GL	BALL	12	0.17	2.04	5100	18.7	0.160	34.6	49	1	CE	300	40.00
60 X 60 X 20	AD0612LS-C70GL	S	12	0.08	0.96	3500	13.3	0.096	21.6	49	0	UL,TUV,CSA,CE	300	40.00
60 X 60 X 20	AD0612LS-C71GL	S	12	0.08	0.96	3500	13.3	0.096	21.6	49	1	UL,CUL,TUV,CSA,CE	300	40.00
60 X 60 X 20	AD0612LS-C76GL	S	12	0.08	0.96	3500	13.3	0.096	21.6	49	6	UL,CUL,CE	300	40.00
60 X 60 X 20	AD0612MS-C70GL	S	12	0.13	1.56	3900	14.5	0.111	25.7	49	0,1,6	UL,TUV,CSA,CE	300	40.00
60 X 60 X 20	AD0612MS-C72GL	S	12	0.13	1.56	3900	14.5	0.111	25.7	49	2,3	UL,CUL,CE	300	40.00
60 X 60 X 20	AD0612HS-C70GL	BALL	12	0.16	1.92	4500	16.4	0.139	29.7	49	0,1,6	UL,TUV,CSA,CE	300	40.00
60 X 60 X 20	AD0612HS-C72GL	BALL	12	0.16	1.92	4500	16.4	0.139	29.7	49	2,3	UL,CUL,CE	300	40.00

NOTE B=Ball S=Sleeve X=Hypro AT= Terminals AW= Wires

ALL RIGHTS RESERVED

ADDA USA
DC FAN SPECIFICATIONS

Frame Dimensions (mm)	Model Part Number	Bearing Type	Volts (V)	Current (A)	Power (W)	Speed (RPM)	Air Flow (CFM)	Pressure (Inches)	Noise (dB/A)	Weight (g)	Features Available	Safety Approvals	Units Per Box	Box Wt. (lbs.)
60 X 60 X 20	AD0624MX-C70GL	HYPRO	24	0.08	1.92	3900	14.5	0.111	25.7	49	0	UL,CUL,TUV,CE	300	40.00
60 X 60 X 20	AD0624HX-C70GL	HYPRO	24	0.09	2.16	4500	16.4	0.139	29.7	49	0	UL,CUL,TUV,CE	300	40.00
60 X 60 X 20	AD0624MB-C70GL	BALL	24	0.08	1.92	3900	14.5	0.111	25.7	49	0	UL,CUL,CE	300	40.00
60 X 60 X 20	AD0624HB-C70GL	BALL	24	0.09	2.16	4500	16.4	0.139	29.7	49	0,1	UL,CUL,TUV,CE	300	40.00
60 X 60 X 20	AD0624HB-C70(T)	BALL	24	0.09	2.16	4500	16.4	0.139	29.7	49	0,6	UL,CUL,CE	300	40.00
60 X 60 X 20	AD0624MS-C70GL	S	24	0.08	1.92	3900	14.5	0.111	25.7	49	0	UL,CUL,CE	300	40.00
60 X 60 X 20	AD0624HS-C70GL	S	24	0.09	2.16	4500	16.4	0.139	29.7	49	0	UL,CUL,TUV,CE	300	40.00
60 X 60 X 25	AD0605MX-A70GL	HYPRO	5	0.32	1.60	3500	18.0	0.118	24.0	68	0	UL,CUL,CE	300	44.00
60 X 60 X 25	AD0605MB-A70GL	BALL	5	0.32	1.60	3500	18.0	0.188	24.0	68	0	UL,TUV,CE	300	40.00
60 X 60 X 25	AD0605HB-A70GL	BALL	5	0.45	2.25	4500	23.2	0.188	32.3	68	0,2	TUV,CE	300	44.00
60 X 60 X 25	AD0605HB-A73GL	BALL	5	0.45	2.25	4500	23.2	0.188	32.3	68	3	CE	300	44.00
60 X 60 X 25	AD0605MS-A70GL	S	5	0.32	1.60	3500	18.0	0.188	24.0	68	0	UL,CUL,CE	300	40.00
60 X 60 X 25	AD0605HS-A71GL	S	5	0.60	3.00	4500	23.2	0.188	32.3	68	1	CE	300	40.00
60 X 60 X 25	AD0612LX-A70GL	HYPRO	12	0.08	0.96	2500	13.2	0.063	16.1	68	0	UL,CUL,TUV,CSA,CE	300	44.00
60 X 60 X 25	AD0612LX-A72GL	HYPRO	12	0.08	0.96	2500	13.2	0.063	16.1	68	2,3	UL,TUV,CSA,CE	300	44.00
60 X 60 X 25	AD0612MX-A70GL	HYPRO	12	0.14	1.68	3500	18.0	0.188	24.0	68	0,6	UL,CUL,TUV,CSA,CE	300	44.00
60 X 60 X 25	AD0612MX-A73GL	HYPRO	12	0.14	1.68	3500	18.0	0.188	24.0	68	3	UL,CUL,TUV,CE	300	44.00
60 X 60 X 25	AD0612HX-A70GL	HYPRO	12	0.23	2.76	4500	23.2	0.188	32.3	68	0,1,2	UL,CUL,TUV,CSA,CE	300	44.00
60 X 60 X 25	AD0612HX-A73GL	HYPRO	12	0.23	2.76	4500	23.2	0.188	32.3	68	3,6	UL,TUV,CSA,CE	300	44.00
60 X 60 X 25	AD0612UX-A70GL	HYPRO	12	0.25	3.00	5000	28.3	0.250	37.0	68	0	CE	300	44.00
60 X 60 X 25	AD0612UX-A71GL	HYPRO	12	0.27	3.24	5300	28.3	0.250	37.0	68	1	UL,CUL,CE	300	44.00
60 X 60 X 25	AD0612UX-A72GL	HYPRO	12	0.27	3.24	5300	28.3	0.250	37.0	68	2,3	CE	300	44.00
60 X 60 X 25	AD0612LB-A70GL	BALL	12	0.08	0.96	2500	13.2	0.063	16.1	68	0,1	UL,CUL,TUV,CSA,CE	300	44.00
60 X 60 X 25	AD0612LB-A70(T)	BALL	12	0.08	0.96	2300	10.7	0.041	14.5	68	0,6	UL,TUV,CSA,CE	300	44.00
60 X 60 X 25	AD0612MB-A70GL	BALL	12	0.14	1.68	3500	18.0	0.118	24.0	68	0	UL,CUL,TUV,CE	300	44.00
60 X 60 X 25	AD0612MB-A71GL	BALL	12	0.14	1.68	3500	18.0	0.118	24.0	68	1	UL,CUL,TUV,CSA,CE	300	44.00
60 X 60 X 25	AD0612MB-A72GL	BALL	12	0.14	1.68	3500	18.0	0.118	24.0	68	2,3	UL,CUL,TUV,CE	300	44.00
60 X 60 X 25	AD0612MB-A76GL	BALL	12	0.14	1.68	3500	18.0	0.118	24.0	68	6	CE	300	44.00
60 X 60 X 25	AD0612HB-A70GL	BALL	12	0.23	2.76	4500	23.2	0.188	32.3	68	0,1	UL,CUL,TUV,CSA,CE	300	44.00
60 X 60 X 25	AD0612HB-A72GL	BALL	12	0.23	2.76	4500	23.2	0.188	32.3	68	2,3,6	UL,CUL,TUV,CE	300	44.00
60 X 60 X 25	AD0612UB-A70GL	BALL	12	0.25	3.00	5000	28.3	0.250	37.0	68	0	UL,CUL,TUV,CSA,CE	300	44.00
60 X 60 X 25	AD0612UB-A71GL	BALL	12	0.25	3.00	5000	28.3	0.250	37.0	68	1	UL,CUL,TUV,CE	300	44.00
60 X 60 X 25	AD0612UB-A72GL	BALL	12	0.25	3.00	5000	28.3	0.250	37.0	68	2,3	UL,CUL,CE	300	44.00
60 X 60 X 25	AD0612UB-A76GL	BALL	12	0.25	3.00	5000	28.3	0.250	37.0	68	6	CE	300	44.00
60 X 60 X 25	AD0612XB-A71GL	BALL	12	0.38	4.56	6100	31.4	0.320	42.9	68	1,2,3	CE	300	44.00
60 X 60 X 25	AD0612XB-A72/UP	BALL	12	0.65	7.80	7400	38.1	0.500	47.8	68	2	CE	300	44.00
60 X 60 X 25	AD0612LS-A70GL	S	12	0.08	0.96	2500	13.2	0.063	16.1	68	0,1	UL,CUL,TUV,CSA,CE	300	44.00
60 X 60 X 25	AD0612LS-A73GL	S	12	0.08	0.96	2500	13.2	0.063	16.1	68	3	UL,CUL,TUV,CE	300	44.00
60 X 60 X 25	AD0612LS-A76GL	S	12	0.08	0.96	2500	13.2	0.063	16.1	68	6	CE	300	44.00
60 X 60 X 25	AD0612MS-A70GL	S	12	0.14	1.68	3500	18.0	0.118	24.0	68	0	UL,CUL,TUV,CSA,CE	300	44.00
60 X 60 X 25	AD0612MS-A76GL	S	12	0.14	1.68	3500	18.0	0.118	24.0	68	6	TUV,CE	300	44.00
60 X 60 X 25	AD0612HS-A70GL	S	12	0.23	2.76	4500	23.2	0.188	32.3	68	0,1	UL,CUL,TUV,CSA,CE	300	44.00
60 X 60 X 25	AD0612HS-A72GL	S	12	0.23	2.76	4500	23.2	0.188	32.3	68	2,6	CE	300	44.00

NOTE B=Ball S=Sleeve X=Hypro AT= Terminals AW= Wires

ALL RIGHTS RESERVED

**ADDA USA
DC FAN SPECIFICATIONS**

Frame Dimensions (mm)	Model Part Number	Bearing Type	Volts (V)	Current (A)	Power (W)	Speed (RPM)	Air Flow (CFM)	Pressure (Inches)	Noise (dB/A)	Weight (g)	Features Available	Safety Approvals	Units Per Box	Box Wt. (lbs.)
60 X 60 X 25	AD0612HS-A73GL	S	12	0.23	2.76	4500	23.2	0.188	32.3	68	3	UL,CE	300	44.00
60 X 60 X 25	AD0612US-A70GL	S	12	0.25	3.00	5000	28.3	0.250	37.0	68	0,6	CE	300	44.00
60 X 60 X 25	AD0612US-A71GL	S	12	0.27	3.24	5300	28.3	0.250	37.0	68	1	TUV,CE	300	44.00
60 X 60 X 25	AD0612US-A73GL	S	12	0.27	3.24	5300	28.3	0.250	37.0	68	3	CE	300	44.00
60 X 60 X 25	AD0624MX-A70GL	HYPRO	24	0.08	1.92	3500	18.0	0.118	24.0	68	0	UL,CUL,TUV,CSA,CE	300	44.00
60 X 60 X 25	AD0624MX-A76GL	HYPRO	24	0.08	1.92	3500	18.0	0.118	24.0	68	6	CE	300	44.00
60 X 60 X 25	AD0624HX-A70GL	HYPRO	24	0.15	3.60	4500	23.2	0.188	32.3	68	0,1	UL,CUL,TUV,CSA,CE	300	44.00
60 X 60 X 25	AD0624HX-A72GL	HYPRO	24	0.15	3.60	4500	23.2	0.188	32.3	68	2	CE	300	44.00
60 X 60 X 25	AD0624UX-A71GL	HYPRO	24	0.16	3.84	5000	28.3	0.250	37.0	68	1,2	CE	300	44.00
60 X 60 X 25	AD0624LB-A70GL	BALL	24	0.05	1.20	2500	16.0	0.079	16.1	68	0	UL,CUL,CE	300	44.00
60 X 60 X 25	AD0624MB-A70GL	BALL	24	0.08	1.92	3500	18.0	0.118	24.0	68	0,1	UL,CUL,TUV,CSA,CE	300	44.00
60 X 60 X 25	AD0624HB-A70GL	BALL	24	0.15	3.60	4500	23.2	0.188	32.3	68	0	UL,CUL,TUV,CSA,CE	300	44.00
60 X 60 X 25	AD0624HB-A71GL	BALL	24	0.15	3.60	4500	23.2	0.188	32.3	68	1	UL,CSA,TUV,CE	300	44.00
60 X 60 X 25	AD0624HB-A72GL	BALL	24	0.15	3.60	4500	23.2	0.188	32.3	68	2,3	UL,CUL,CE	300	44.00
60 X 60 X 25	AD0624HB-A76GL	BALL	24	0.15	3.60	4500	23.2	0.188	32.3	68	6	CE	300	44.00
60 X 60 X 25	AD0624UB-A70GL	BALL	24	0.16	3.84	5000	26.5	0.204	38.1	68	0,1,2,3	CE	300	44.00
60 X 60 X 25	AD0624LS-A70GL	S	24	0.05	1.20	2500	16.0	0.079	16.1	68	0	UL,CUL,TUV,CSA,CE	300	44.00
60 X 60 X 25	AD0624MS-A70GL	S	24	0.08	1.92	3500	18.0	0.118	24.0	68	0,1	UL,CUL,TUV,CSA,CE	300	44.00
60 X 60 X 25	AD0624MS-A72GL	S	24	0.08	1.92	3500	18.0	0.118	24.0	68	2	CE	300	44.00
60 X 60 X 25	AD0624HS-A70GL	S	24	0.15	3.60	4500	23.2	0.188	32.3	68	0,1	UL,CUL,TUV,CSA,CE	300	44.00
60 X 60 X 25	AD0624HS-A72GL	S	24	0.15	3.60	4500	23.2	0.188	32.3	68	2	CE	300	44.00
60 X 60 X 25	AD0624HS-A73GL	S	24	0.15	3.60	4500	23.2	0.188	32.3	68	3	UL,CE	300	44.00
60 X 60 X 25	AD0624US-A71GL	S	24	0.16	3.84	5000	28.3	0.250	37.0	68	1	TUV,CE	300	44.00
70 X 70 X 15	AD0712HB-DA6	BALL	12	0.27	3.24	4200	32.3	0.164	37.3	54	6	CE		
70 X 70 X 15	AD0712UB-DA6	BALL	12	0.30	3.60	4500	34.8	0.193	43.4	54	6	CE		
70 X 70 X 25	AD0705MX-A76GL	HYPRO	5	0.30	1.50	3800	31.0	0.176	32.0	61	6	CE		
70 X 70 X 25	AD0705MB-A76GL	BALL	5	0.30	1.50	3800	31.0	0.176	32.0	61	6	CE		
70 X 70 X 25	AD0712-LX-A70GL	HYPRO	12	0.12	1.44	3300	27.0	0.134	28.0	61	0	CE		
70 X 70 X 25	AD0712-MX-A70GL	HYPRO	12	0.16	1.92	3800	31.0	0.176	32.0	61	0	CE		
70 X 70 X 25	AD0712-HX-A70GL	HYPRO	12	0.19	2.28	4200	34.0	0.217	35.5	61	0	CE		
70 X 70 X 25	AD0712LB-A70GL	BALL	12	0.12	1.44	3300	27.0	0.134	28.0	61	0	CE		
70 X 70 X 25	AD0712MB-A70GL	BALL	12	0.16	1.92	3800	31.0	0.176	32.0	61	0,6	CE		
70 X 70 X 25	AD0712HB-A70GL	BALL	12	0.19	2.28	4200	34.0	0.217	35.5	61	0,6	CE		
70 X 70 X 25	AD0712UB-A76GL	BALL	12	0.24	2.88	4500	38.4	0.239	37.8	61	6	CE		
70 X 70 X 25	AD0712LS-A70GL	S	12	0.12	1.44	3300	27.0	0.134	28.0	61	0	CE		
70 X 70 X 25	AD0712MS-A70GL	S	12	0.16	1.92	3800	31.0	0.176	32.0	61	0	CE		
70 X 70 X 25	AD0712HS-A70GL	S	12	0.19	2.28	4200	34.0	0.217	35.5	61	0,6	CE		
70 X 70 X 25	AD0712US-A76GL	S	12	0.24	2.88	4500	38.4	0.239	37.8	61	6	CE		
70 X 70 X 25	AD0724HB-A70GL	BALL	24	0.13	3.12	4200	34.0	0.218	35.5	61	0	CE		
75 X 75 X 30	AD7512MX	HYPRO	12	0.20	2.40	2600	7.8	0.228	34.9	80	0	CE		
75 X 75 X 30	AD7512HX	HYPRO	12	0.30	3.60	3000	10.3	0.350	38.5	80	1	UL,CUL,CE		
75 X 75 X 30	AD7512HX	HYPRO	12	0.30	3.60	3000	10.3	0.350	38.5	80	3	CE		
75 X 75 X 30	AD7512UX	HYPRO	12	0.55	6.60	4200	13.1	0.822	44.7	80	0,2,3	CE		

NOTE B=Ball S=Sleeve X=Hypro AT= Terminals AW= Wires

ALL RIGHTS RESERVED

**ADDA USA
DC FAN SPECIFICATIONS**

Frame Dimensions (mm)	Model Part Number	Bearing Type	Volts (V)	Current (A)	Power (W)	Speed (RPM)	Air Flow (CFM)	Pressure (Inches)	Noise (dB/A)	Weight (g)	Features Available	Safety Approvals	Units Per Box	Box Wt. (lbs.)
75 X 75 X 30	AD7512LB	BALL	12	0.11	1.32	2200	6.9	0.190	29.0	80	0	CE		
75 X 75 X 30	AD7512MB	BALL	12	0.15	1.80	2600	7.8	0.228	34.9	80	0,3	UL,CUL,CE		
75 X 75 X 30	AD7512HB	BALL	12	0.24	2.88	3000	10.3	0.350	38.5	80	0,2,3	UL,CUL,CE		
75 X 75 X 30	AD7512UB	BALL	12	0.52	6.24	4200	13.1	0.822	44.7	80	0,2,3	CE		
75 X 75 X 30	AD7512MS	S	12	0.20	2.40	2600	7.8	0.228	34.9	80	0	UL,CUL,CE		
75 X 75 X 30	AD7512HS	S	12	0.30	3.60	3000	10.3	0.350	38.5	80	0,2	UL,CUL,CE		
75 X 75 X 30	AD7524MX	HYPRO	24	0.14	3.36	2600	7.8	0.228	34.9	80	0	CE		
75 X 75 X 30	AD7524HX	HYPRO	24	0.20	4.80	3000	10.3	0.350	38.5	80	0	CE		
75 X 75 X 30	AD7524UX	HYPRO	24	0.27	6.48	4200	13.1	0.822	44.7	80	0	CE		
75 X 75 X 30	AD7524MB	BALL	24	0.14	3.36	2600	7.8	0.228	34.9	80	0	UL,CUL,CE		
75 X 75 X 30	AD7524HB	BALL	24	0.16	3.84	3000	10.3	0.350	38.5	80	0	UL,CUL,CE		
75 X 75 X 30	AD7524UB	BALL	24	0.27	6.48	4200	13.1	0.822	44.7	80	0	CE		
75 X 75 X 30	AD7524LS	S	24	0.12	2.88	2200	6.9	0.190	29.0	80	0	CE		
75 X 75 X 30	AD7524MS	S	24	0.14	3.36	2600	7.8	0.228	34.9	80	0	UL,CUL,CE		
75 X 75 X 30	AD7524HS	S	24	0.16	3.84	3000	10.3	0.350	38.5	80	0	UL,CUL,CE		
75 X 75 X 30	AD7524US	S	24	0.27	6.48	4200	13.1	0.822	44.7	80	0	CE		
80 X 80 X 15	AD0805MX-D71	HYPRO	5	0.24	1.20	2440	22.4	0.083	26.0	63	1	UL,CUL,CE	200	32.34
80 X 80 X 15	AD0805HX-D71	HYPRO	5	0.43	2.15	3200	29.9	0.129	31.4	63	1	UL,CUL,CE	200	32.34
80 X 80 X 15	AD0805MB-D71	BALL	5	0.24	1.20	2440	22.4	0.083	26.0	63	1	UL,CUL,TUV,CE	200	32.24
80 X 80 X 15	AD0805HB-D70	BALL	5	0.40	2.00	3200	29.9	0.129	33.4	63	0	CE	200	32.34
80 X 80 X 15	AD0805HB-D71	BALL	5	0.43	2.15	3200	29.9	0.129	31.4	63	1	UL,CUL,TUV,CE	200	32.34
80 X 80 X 15	AD0805MS-D71	S	5	0.24	1.20	2440	22.4	0.083	26.0	63	1	UL,CUL,TUV,CE	200	32.34
80 X 80 X 15	AD0805HS-D70	S	5	0.40	2.00	3200	29.9	0.129	33.4	63	0	CE	200	32.34
80 X 80 X 15	AD0805HS-D71	S	5	0.43	2.15	3200	29.9	0.129	31.4	63	1	UL,CUL,TUV,CE	200	32.34
80 X 80 X 15	AD0812LX-D70	HYPRO	12	0.09	1.08	2000	20.0	0.050	19.6	63	0	UL,CUL,TUV,CE	200	32.24
80 X 80 X 15	AD0812MX-D70	HYPRO	12	0.12	1.44	2440	22.4	0.083	26.0	63	0,6	UL,CUL,TUV,CE		
80 X 80 X 15	AD0812MX-D71	HYPRO	12	0.15	1.80	2440	22.4	0.083	26.0	63	1	UL,CUL,TUV,CE	200	32.34
80 X 80 X 15	AD0812MX-D73	HYPRO	12	0.15	1.80	2440	22.4	0.083	26.0	63	3	CE		
80 X 80 X 15	AD0812HX-D70	HYPRO	12	0.18	2.16	3200	29.9	0.129	33.4	63	0,6	UL,CUL,TUV,CE	200	32.34
80 X 80 X 15	AD0812HX-D71	HYPRO	12	0.19	2.28	3200	28.0	0.107	28.1	63	1	UL,CUL,TUV,CE	200	32.34
80 X 80 X 15	AD0812HX-D73	HYPRO	12	0.19	2.28	3200	28.0	0.107	28.1	63	3	CE	200	32.34
80 X 80 X 15	AD0812LB-D70	BALL	12	0.09	1.08	2000	20.0	0.050	19.6	63	0,6	UL,CUL,TUV,CE	200	32.34
80 X 80 X 15	AD0812LB-D73	BALL	12	0.09	1.08	2000	20.0	0.050	19.6	63	3	CE	200	32.34
80 X 80 X 15	AD0812MB-D70	BALL	12	0.12	1.44	2440	22.4	0.083	26.0	63	0,6	UL,CUL,TUV,CE	200	32.34
80 X 80 X 15	AD0812MB-D71	BALL	12	0.15	1.80	2440	22.4	0.083	26.0	63	1	UL,CUL,TUV,CE	200	32.34
80 X 80 X 15	AD0812MB-D73	BALL	12	0.15	1.80	2440	22.4	0.083	26.0	63	3	CE	200	32.34
80 X 80 X 15	AD0812MB-D74	BALL	12	0.08	0.96	2440	22.1	0.087	25.4	63	4	UL,CUL,CE	200	32.34
80 X 80 X 15	AD0812HB-D70	BALL	12	0.18	2.16	3200	29.9	0.129	33.4	63	0,6	UL,CUL,TUV,CE	200	32.34
80 X 80 X 15	AD0812HB-D71	BALL	12	0.19	2.16	3200	29.9	0.129	33.4	63	1	UL,CUL,TUV,CE	200	32.34
80 X 80 X 15	AD0812HB-D72	BALL	12	0.19	2.16	3200	29.9	0.129	33.4	63	2	CE	200	32.34
80 X 80 X 15	AD0812HB-D73	BALL	12	0.19	2.16	3200	29.9	0.129	33.4	63	3	TUV,CE	200	32.34
80 X 80 X 15	AD0812HB-D74	BALL	12	0.17	2.16	3200	29.9	0.129	33.4	63	4	UL,CUL,TUV,CE	200	32.34
80 X 80 X 15	AD0812LS-D70	S	12	0.09	1.08	2000	20.0	0.050	19.6	63	0,6	UL,CUL,TUV,CE	200	32.34

NOTE B=Ball S=Sleeve X=Hypro AT=Terminals AW=Wires

ALL RIGHTS RESERVED

**ADDA USA
DC FAN SPECIFICATIONS**

Frame Dimensions (mm)	Model Part Number	Bearing Type	Volts (V)	Current (A)	Power (W)	Speed (RPM)	Air Flow (CFM)	Pressure (Inches)	Noise (dB/A)	Weight (g)	Features Available	Safety Approvals	Units Per Box	Box Wt. (lbs.)
80 X 80 X 15	AD0812MS-D70	S	12	0.12	1.44	2440	22.4	0.083	26.0	63	0,6	UL,CUL,TUV,CE	200	32.34
80 X 80 X 15	AD0812MS-D71	S	12	0.15	1.80	2440	22.4	0.083	26.0	63	1	UL,CUL,TUV,CE	200	32.34
80 X 80 X 15	AD0812MS-D73	S	12	0.15	1.80	2440	22.4	0.083	26.0	63	3	CE	200	32.34
80 X 80 X 15	AD0812HS-D70	S	12	0.18	2.16	3200	29.9	0.129	33.4	63	0,6	UL,CUL,TUV,CE	200	32.34
80 X 80 X 15	AD0812HS-D71	S	12	0.19	2.28	3200	29.9	0.129	33.4	63	1	UL,CUL,CE	200	32.34
80 X 80 X 15	AD0812HS-D73	S	12	0.18	2.16	3200	29.9	0.129	33.4	63	3	CE	200	32.34
80 X 80 X 15	AD0824MX-D71	HYPRO	24	0.10	2.40	2440	21.0	0.070	27.0	63	1	UL,CUL,TUV,CE	200	32.34
80 X 80 X 15	AD0824HX-D71	HYPRO	24	0.13	3.12	3200	29.0	0.116	33.5	63	1	UL,CUL,TUV,CE	200	32.34
80 X 80 X 15	AD0824MB-D71	BALL	24	0.10	2.40	2440	21.0	0.070	27.0	63	1	UL,CUL,TUV,CE	200	32.34
80 X 80 X 15	AD0824HB-D70	BALL	24	0.13	3.12	3200	32.0	0.131	33.6	63	0	CE	200	32.34
80 X 80 X 15	AD0824HB-D71	BALL	24	0.13	3.12	3200	32.0	0.131	33.6	63	1	UL,CUL,TUV,CE	200	32.34
80 X 80 X 15	AD0824MS-D70	S	24	0.08	1.92	2440	22.4	0.083	26.0	63	0	CE	200	32.34
80 X 80 X 15	AD0824MS-D71	S	24	0.10	2.40	2440	21.0	0.070	27.0	63	1	UL,CUL,TUV,CE	200	32.34
80 X 80 X 15	AD0824HS-D71	S	24	0.13	3.12	3200	29.0	0.116	33.5	63	1	UL,CUL,TUV,CE	200	32.34
80 X 80 X 20	AD0805HX-C72	HYPRO	5	0.32	3.84	3010	27.3	0.128	31.4	70	2	CE	200	35.20
80 X 80 X 20	AD0805HB-C70	BALL	5	0.43	5.16	3010	27.3	0.128	31.4	70	0	CE	200	35.20
80 X 80 X 20	AD0805HB-C71	BALL	5	0.32	3.84	3010	27.3	0.128	31.4	70	1,2	CE	200	35.20
80 X 80 X 20	AD0812LX-C70	HYPRO	12	0.10	1.20	2000	18.9	0.059	17.7	70	0	CE	200	35.20
80 X 80 X 20	AD0812MX-C70	HYPRO	12	0.16	1.92	2440	22.1	0.087	25.4	70	0	UL,CUL,CSA,CE	200	35.20
80 X 80 X 20	AD0812MX-C76	HYPRO	12	0.16	1.92	2440	21.8	0.085	25.0	70	6	CE	200	35.20
80 X 80 X 20	AD0812HX-C70	HYPRO	12	0.24	2.88	3010	27.3	0.128	31.4	70	0	UL,CUL,CSA,CE	200	35.20
80 X 80 X 20	AD0812HX-C72	HYPRO	12	0.24	2.88	3010	27.3	0.128	31.4	70	2,3	CE	200	35.20
80 X 80 X 20	AD0812UX-C72	HYPRO	12	0.29	3.48	4200	38.9	0.234	40.7	70	2	CE	200	35.20
80 X 80 X 20	AD0812LB-C70	BALL	12	0.10	1.20	2100	19.3	0.067	22.4	70	0	CE	200	35.20
80 X 80 X 20	AD0812LB-C76	BALL	12	0.10	1.20	2100	27.3	0.128	31.4	70	6	CE	200	35.20
80 X 80 X 20	AD0812MB-C70	BALL	12	0.16	1.92	2440	22.1	0.087	25.4	70	0,6	UL,CUL,TUV,CSA,CE	200	35.20
80 X 80 X 20	AD0812MB-C71	BALL	12	0.16	1.92	2440	22.1	0.087	25.4	70	1	UL,CSA,CE	200	35.20
80 X 80 X 20	AD0812MB-C72	BALL	12	0.16	1.92	2440	22.1	0.087	25.4	70	2,3	CE	200	35.20
80 X 80 X 20	AD0812HB-C70	BALL	12	0.24	2.88	3100	28.8	0.138	32.4	70	0,6	UL,CUL,TUV,CSA,CE	200	35.20
80 X 80 X 20	AD0812HB-C71	BALL	12	0.24	2.88	3010	27.3	0.128	31.4	70	1	UL,TUV,CSA,CE	200	35.20
80 X 80 X 20	AD0812HB-C72	BALL	12	0.24	2.88	3010	27.3	0.128	31.4	70	2,3	CE	200	35.20
80 X 80 X 20	AD0812UB-C72	BALL	12	0.29	3.48	4200	38.9	0.234	40.7	70	2	CE	200	35.20
80 X 80 X 20	AD0812LS-C70	S	12	0.24	2.88	2040	27.3	0.128	31.4	70	0	UL,CE	200	35.20
80 X 80 X 20	AD0812LS-C76	S	12	0.10	1.20	2040	27.3	0.128	31.4	70	6	CE	200	35.20
80 X 80 X 20	AD0812MS-C70	S	12	0.16	1.92	2440	22.1	0.087	25.4	70	0	UL,CUL,TUV,CSA,CE	200	35.20
80 X 80 X 20	AD0812MS-C71	S	12	0.16	1.92	2440	22.1	0.087	25.4	70	1	UL,CSA,CE	200	35.20
80 X 80 X 20	AD0812MS-C72	S	12	0.16	1.92	2440	22.1	0.087	25.4	70	2	CE	200	35.20
80 X 80 X 20	AD0812MS-C76	S	12	0.16	1.92	2400	21.8	0.085	25.0	70	6	CE	200	35.20
80 X 80 X 20	AD0812HS-C70	S	12	0.24	2.88	3010	27.3	0.128	31.4	70	0,6	UL,CUL,TUV,CSA,CE	200	35.20
80 X 80 X 20	AD0812HS-C70(UT)	S	12	0.24	2.88	3750	33.5	0.194	34.0	70	0,6	UL,CUL,TUV,CSA,CE	200	35.20
80 X 80 X 20	AD0812HS-C71	S	12	0.24	2.88	3010	27.3	0.128	31.4	70	1	UL,CSA,CE	200	35.20
80 X 80 X 20	AD0812HS-C72	S	12	0.24	2.88	3010	27.3	0.128	31.4	70	2	CE	200	35.20
80 X 80 X 20	AD0824MX-C70	HYPRO	24	0.13	3.12	2440	22.1	2.210	25.4	66	0,1,2,3	UL,CUL,TUV,CSA,CE	200	35.20

NOTE B=Ball S=Sleeve X=Hypro AT= Terminals AW= Wires

ALL RIGHTS RESERVED

ADDA USA
DC FAN SPECIFICATIONS

Frame Dimensions (mm)	Model Part Number	Bearing Type	Volts (V)	Current (A)	Power (W)	Speed (RPM)	Air Flow (CFM)	Pressure (Inches)	Noise (dB/A)	Weight (g)	Features Available	Safety Approvals	Units Per Box	Box Wt. (lbs.)
80 X 80 X 20	AD0824HX-C70	HYPRO	24	0.15	3.60	3010	27.3	0.128	31.4	70	0	UL,CUL,CSA,CE	200	35.20
80 X 80 X 20	AD0824MB-C70	BALL	24	0.13	3.12	2440	22.1	0.087	25.4	70	0	UL,CUL,TUV,CSA,CE	200	35.20
80 X 80 X 20	AD0824MB-C71	BALL	24	0.13	3.12	2440	22.1	0.087	25.4	70	1	UL,CSA,CE	200	35.20
80 X 80 X 20	AD0824HB-C70	BALL	24	0.15	3.60	3010	27.3	0.128	31.4	70	0	UL,CUL,TUV,CSA,CE	200	35.20
80 X 80 X 20	AD0824HB-C71	BALL	24	0.15	3.60	3010	27.3	0.128	31.4	70	1	UL,TUV,CSA,CE	200	35.20
80 X 80 X 20	AD0824HB-C72	BALL	24	0.15	3.60	3010	27.3	0.128	31.4	70	2	CE	200	35.20
80 X 80 X 20	AD0824MS-C70	S	24	0.13	3.12	2440	22.1	0.087	25.4	70	0	UL,CUL,TUV,CSA,CE	200	35.20
80 X 80 X 20	AD0824MS-C71	S	24	0.13	3.12	2440	22.1	0.087	25.4	70	1	UL,CSA,CE	200	35.20
80 X 80 X 20	AD0824HS-C70	S	24	0.15	3.60	3010	27.3	0.128	31.4	70	0	UL,CUL,TUV,CSA,CE	200	35.20
80 X 80 X 20	AD0824HS-C71	S	24	0.15	3.60	3010	27.3	0.128	31.4	70	1	UL,TUV,CSA,CE	200	35.20
80 X 80 X 25	AD0812DX-A70GL	HYPRO	12	0.08	0.96	1600	20.5	0.051	14.0	86	0,1,2	CE	200	35.20
80 X 80 X 25	AD0812LX-A70GL	HYPRO	12	0.12	1.44	2030	25.0	0.090	22.0	86	0	UL,TUV,CSA,CE	200	35.20
80 X 80 X 25	AD0812LX-A72GL	HYPRO	12	0.12	1.44	2030	25.0	0.090	22.0	86	2	UL,CE	200	35.20
80 X 80 X 25	AD0812LX-A73GL	HYPRO	12	0.12	1.44	2030	26.2	0.078	22.5	86	3	UL,TUV,CE	200	35.20
80 X 80 X 25	AD0812LX-A76GL	HYPRO	12	0.12	1.44	2030	25.0	0.090	22.0	86	6	UL,CUL,TUV,CE	200	35.20
80 X 80 X 25	AD0812MX-A70GL	HYPRO	12	0.15	1.80	2440	31.4	0.114	28.3	86	0	UL,TUV,CSA,CE	200	35.20
80 X 80 X 25	AD0812MX-A71GL	HYPRO	12	0.15	1.80	2450	31.5	0.115	27.6	86	1	UL,CSA,CE	200	35.20
80 X 80 X 25	AD0812MX-A76GL	HYPRO	12	0.15	1.80	2440	31.4	0.114	28.3	86	6	UL,CUL,TUV,CSA,CE	200	35.20
80 X 80 X 25	AD0812HX-A70GL	HYPRO	12	0.25	3.00	3010	38.6	0.160	34.4	86	0,6	UL,TUV,CSA,CE	200	35.20
80 X 80 X 25	AD0812HX-A71GL	HYPRO	12	0.25	3.00	3010	38.6	0.160	34.4	86	1	UL,CSA,CE	200	35.20
80 X 80 X 25	AD0812HX-A72GL	HYPRO	12	0.25	3.00	3010	38.6	0.160	34.4	86	2,3	UL,CE	200	35.20
80 X 80 X 25	AD0812UX-A70GL	HYPRO	12	0.50	6.00	3700	48.3	0.268	40.0	86	0	UL,CUL,TUV,CE	200	35.20
80 X 80 X 25	AD0812UX-A71GL	HYPRO	12	0.45	5.40	3900	50.0	0.279	41.0	86	1	TUV,CE	200	35.20
80 X 80 X 25	AD0812UX-A72GL	HYPRO	12	0.45	5.40	3900	50.0	0.279	41.0	86	2,3	CE	200	35.20
80 X 80 X 25	AD0812DB-A70GL	BALL	12	0.08	0.96	1600	20.5	0.050	15.0	86	0,1,3	CE	200	35.20
80 X 80 X 25	AD0812LB-A70GL	BALL	12	0.12	1.44	2030	26.2	0.078	22.5	86	0,6	UL,TUV,CSA,CE	200	35.20
80 X 80 X 25	AD0812LB-A71GL	BALL	12	0.12	1.44	2030	26.2	0.078	22.5	86	1	UL,CSA,CE	200	35.20
80 X 80 X 25	AD0812LB-A72GL	BALL	12	0.12	1.44	2030	26.2	0.078	22.5	86	2,3	UL,TUV,CE	200	35.20
80 X 80 X 25	AD0812MB-A70GL	BALL	12	0.15	1.80	2440	31.4	0.114	28.3	86	0	UL,TUV,CSA,CE	200	35.20
80 X 80 X 25	AD0812MB-A70TS	BALL	12	0.15	1.80	2700	33.0	0.130	29.0	86	0	UL,TUV,CSA,CE	200	35.20
80 X 80 X 25	AD0812MB-A71GL	BALL	12	0.15	1.80	2440	31.4	0.114	28.3	86	1,2	UL,CSA,CE	200	35.20
80 X 80 X 25	AD0812MB-A73GL	BALL	12	0.15	1.80	2440	31.4	0.114	28.3	86	3	UL,CE	200	35.20
80 X 80 X 25	AD0812MB-A76GL	BALL	12	0.15	1.80	2440	31.4	0.114	28.3	86	6	UL,CUL,TUV,CSA,CE	200	35.20
80 X 80 X 25	AD0812HB-A70GL	BALL	12	0.25	3.00	3010	38.6	0.160	34.4	86	0,1	UL,TUV,CSA,CE	200	35.20
80 X 80 X 25	AD0812HB-A72GL	BALL	12	0.25	3.00	3010	38.6	0.160	34.4	86	2,3	UL,TUV,CE	200	35.20
80 X 80 X 25	AD0812HB-A74GL	BALL	12	0.29	3.48	3010	38.6	0.160	34.4	86	4	TUV,CE	200	35.20
80 X 80 X 25	AD0812HB-A76GL	BALL	12	0.25	3.00	3010	38.6	0.160	34.4	86	6	UL,CUL,TUV,CSA,CE	200	35.20
80 X 80 X 25	AD0812UB-A70GL	BALL	12	0.30	3.60	3400	43.8	0.190	40.0	86	0	UL,CUL,TUV,CE	200	35.20
80 X 80 X 25	AD0812UB-A71GL	BALL	12	0.45	5.40	3900	50.0	0.279	41.0	86	1	UL,CUL,TUV,CE	200	35.20
80 X 80 X 25	AD0812UB-A72GL	BALL	12	0.45	5.40	3900	50.0	0.279	41.0	86	2	UL,CUL,CE	200	35.20
80 X 80 X 25	AD0812UB-A73GL	BALL	12	0.45	5.40	3900	50.0	0.279	41.0	86	3	UL,CUL,CE	200	35.20
80 X 80 X 25	AD0812DS-A70GL	S	12	0.08	0.96	1600	20.5	0.050	15.0	86	0,6	CE	200	35.20
80 X 80 X 25	AD0812LS-A70GL	S	12	0.12	1.44	2030	26.2	0.078	22.5	86	0	UL,TUV,CSA,CE	200	35.20

NOTE B=Ball S=Sleeve X=Hypro AT= Terminals AW= Wires

ALL RIGHTS RESERVED

ADDA USA
DC FAN SPECIFICATIONS

Frame Dimensions (mm)	Model Part Number	Bearing Type	Volts (V)	Current (A)	Power (W)	Speed (RPM)	Air Flow (CFM)	Pressure (Inches)	Noise (dB/A)	Weight (g)	Features Available	Safety Approvals	Units Per Box	Box Wt. (lbs.)
80 X 80 X 25	AD0812LS-A71GL	S	12	0.12	1.44	2030	26.2	0.078	22.5	86	1	UL,CSA,CE	200	35.20
80 X 80 X 25	AD0812LS-A73GL	S	12	0.12	1.44	2030	26.2	0.078	22.5	86	3	UL,TUL,CE	200	35.20
80 X 80 X 25	AD0812LS-A76GL	S	12	0.12	1.44	2030	26.2	0.078	22.5	86	6	UL,CUL,TUV,CE	200	35.20
80 X 80 X 25	AD0812MS-A70GL	S	12	0.15	1.80	2440	31.4	0.114	28.3	86	0	UL,TUV,CSA,CE	200	35.20
80 X 80 X 25	AD0812MS-A71GL	S	12	0.15	1.80	2440	31.4	0.114	28.3	86	1,2	UL,CSA,CE	200	35.20
80 X 80 X 25	AD0812MS-A73GL	S	12	0.15	1.80	2440	31.4	0.114	28.3	86	3	UL,CE	200	35.20
80 X 80 X 25	AD0812MS-A76GL	S	12	0.15	1.80	2440	31.4	0.114	28.3	86	6	UL,CUL,TUV,CSA,CE	200	35.20
80 X 80 X 25	AD0812HS-A70GL	S	12	0.25	3.00	3010	38.6	0.160	34.4	86	0	UL,TUV,CSA,CE	200	35.20
80 X 80 X 25	AD0812HS-A71GL	S	12	0.25	3.00	3010	38.6	0.160	34.4	86	1	UL,TUL,CE	200	35.20
80 X 80 X 25	AD0812HS-A72GL	S	12	0.25	3.00	3010	38.6	0.160	34.4	86	2,3	UL,CE	200	35.20
80 X 80 X 25	AD0812HS-A76GL	S	12	0.25	3.00	3010	38.6	0.160	34.4	86	6	UL,CUL,TUV,CE	200	35.20
80 X 80 X 25	AD0812US-A70GL	S	12	0.38	4.56	3700	46.7	0.226	38.5	86	0	CE	200	35.20
80 X 80 X 25	AD0812US-A71GL	S	12	0.45	5.40	3900	50.0	0.279	41.0	86	1	TUV,CE	200	35.20
80 X 80 X 25	AD0812US-A73GL	S	12	0.45	5.40	3900	50.0	0.279	41.0	86	3	CE	200	35.20
80 X 80 X 25	AD0812US-A76GL	S	12	0.38	4.56	3700	46.7	0.226	38.5	86	6	UL,CUL,TUV,CE	200	35.20
80 X 80 X 25	AD0824LX-A70GL	HYPRO	24	0.09	2.16	2030	26.2	0.078	22.5	86	0	UL,CSA,CE	200	35.20
80 X 80 X 25	AD0824MX-A70GL	HYPRO	24	0.10	2.40	2440	31.4	0.114	28.3	86	0	UL,TUV,CSA,CE	200	35.20
80 X 80 X 25	AD0824MX-A72GL	HYPRO	24	0.09	2.16	2440	31.4	0.114	28.3	86	2	UL,CE	200	35.20
80 X 80 X 25	AD0824HX-A70GL	HYPRO	24	0.16	3.84	3010	38.6	0.166	34.0	86	0	UL,TUV,CSA,CE	200	35.20
80 X 80 X 25	AD0824HX-A71GL	HYPRO	24	0.16	3.84	3010	38.6	0.166	34.0	86	1	UL,CSA,CE	200	35.20
80 X 80 X 25	AD0824HX-A72GL	HYPRO	24	0.16	3.84	3010	38.6	0.166	34.0	86	2	UL,CE	200	35.20
80 X 80 X 25	AD0824UX-A71GL	HYPRO	24	0.26	6.24	3900	50.0	0.279	41.0	86	0,1,2,3	CE	200	35.20
80 X 80 X 25	AD0824LB-A70GL	BALL	24	0.09	2.16	2030	26.2	0.078	22.5	86	0	UL,TUV,CSA,CE	200	35.20
80 X 80 X 25	AD0824LB-A71GL	BALL	24	0.09	2.16	2030	26.2	0.078	22.5	86	1	UL,CSA,CE	200	35.20
80 X 80 X 25	AD0824LB-A73GL	BALL	24	0.09	2.16	2030	26.2	0.078	22.5	86	3	UL,CE	200	35.20
80 X 80 X 25	AD0824MB-A70GL	BALL	24	0.10	2.40	2440	31.4	0.114	28.3	86	0	UL,TUV,CSA,CE	200	35.20
80 X 80 X 25	AD0824MB-A71GL	BALL	24	0.10	2.40	2440	31.4	0.114	28.3	86	1	UL,CUL,TUV,CSA,CE	200	35.20
80 X 80 X 25	AD0824MB-A73GL	BALL	24	0.10	2.40	2440	31.4	0.114	28.3	86	3	UL,CE	200	35.20
80 X 80 X 25	AD0824HB-A70GL	BALL	24	0.16	3.84	3010	38.6	0.160	34.4	86	0	UL,TUV,CSA,CE	200	35.20
80 X 80 X 25	AD0824HB-A71GL	BALL	24	0.16	3.84	3010	38.6	0.160	34.4	86	1	UL,TUV,CSA,CE	200	35.20
80 X 80 X 25	AD0824HB-A72GL	BALL	24	0.16	3.84	3010	38.6	0.160	34.4	86	2	UL,TUV,CE	200	35.20
80 X 80 X 25	AD0824HB-A73GL	BALL	24	0.16	3.84	3010	38.6	0.160	34.4	86	3	UL,CE	200	35.20
80 X 80 X 25	AD0824HB-A76GL	BALL	24	0.16	3.84	3200	40.0	0.171	35.0	86	6	UL,CE	200	35.20
80 X 80 X 25	AD0824UB-A71GL	BALL	24	0.26	6.24	3900	50.0	0.279	41.0	86	1	UL,CUL,TUV,CE	200	35.20
80 X 80 X 25	AD0824UB-A72GL	BALL	24	0.26	6.24	3900	50.0	0.279	41.0	86	2	UL,CUL,CE	200	35.20
80 X 80 X 25	AD0824UB-A73GL	BALL	24	0.26	6.24	3900	50.0	0.279	41.0	86	3	CE	200	35.20
80 X 80 X 25	AD0824LS-A70GL	S	24	0.09	2.16	2030	26.2	0.078	22.5	86	0,1	UL,CSA,CE	200	35.20
80 X 80 X 25	AD0824LS-A76GL	S	24	0.09	2.16	2030	26.2	0.078	22.5	86	6	UL,CE	200	35.20
80 X 80 X 25	AD0824MS-A70GL	S	24	0.10	2.40	2440	31.4	0.114	28.3	86	0	UL,TUV,CSA,CE	200	35.20
80 X 80 X 25	AD0824MS-A71GL	S	24	0.10	2.40	2440	31.4	0.114	28.3	86	1	UL,CSA,CE	200	35.20
80 X 80 X 25	AD0824MS-A72GL	S	24	0.10	2.40	2440	31.4	0.114	28.3	86	2	UL,CE	200	35.20
80 X 80 X 25	AD0824MS-A76GL	S	24	0.10	2.40	2400	30.0	0.100	27.0	86	6	UL,CE	200	35.20
80 X 80 X 25	AD0824HS-A70GL	S	24	0.16	3.84	3010	38.6	0.160	34.4	86	0	UL,TUV,CSA,CE	200	35.20

NOTE B=Ball S=Sleeve X=Hypro AT=Terminals AW=Wires

ALL RIGHTS RESERVED

ADDA USA
DC FAN SPECIFICATIONS

Frame Dimensions (mm)	Model Part Number	Bearing Type	Volts (V)	Current (A)	Power (W)	Speed (RPM)	Air Flow (CFM)	Pressure (Inches)	Noise (dB/A)	Weight (g)	Features Available	Safety Approvals	Units Per Box	Box Wt. (lbs.)
80 X 80 X 25	AD0824HS-A71GL	S	24	0.16	3.84	3010	38.6	0.160	34.4	86	1,2	UL,CSA,CE	200	35.20
80 X 80 X 25	AD0824US-A70GL	S	24	0.29	6.96	4100	52.5	0.253	42.0	86	0	CE	200	35.20
80 X 80 X 25	AD0824US-A71GL	S	24	0.26	6.24	3900	50.0	0.279	41.0	86	1	CE	200	35.20
80 X 80 X 25	AD0848HB-A71GL	BALL	48	0.11	5.28	3010	38.6	0.160	34.4	86	1	UL,CUL,TUV,CE	200	35.20
80 X 80 X 25	AD0848HB-A73GL	BALL	48	0.11	5.28	3010	38.6	0.160	34.4	86	3,6	CE	200	35.20
80 X 80 X 25	AD0848XB-A76GL	BALL	48	0.13	6.24	4500	55.2	0.302	44.8	86	6	CE	200	35.20
80 X 80 X 25	AD0848HS-A71GL	S	48	0.11	5.28	3010	38.6	0.160	34.4	86	1	UL,CUL,TUV,CE	200	35.20
80 X 80 X 25	AD0848HS-A73GL	S	48	0.08	3.84	3010	38.6	0.160	34.4	86	3,6	CE	200	35.20
92 X 92 X 20	AD0912MX-C70	HYPRO	12	0.16	1.92	2430	29.0	0.083	28.9	85	0	TUV,CSA,CE	200	41.30
92 X 92 X 20	AD0912HX-C70	HYPRO	12	0.25	3.00	2740	32.8	0.106	32.8	85	0	UL,TUV,CSA,CE	200	41.30
92 X 92 X 20	AD0912HX-C7	HYPRO	12	0.25	3.00	2740	32.8	0.106	32.8	85	6	CE	200	41.30
92 X 92 X 20	AD0912MB-C70	BALL	12	0.16	1.92	2430	29.0	0.083	28.9	85	0	UL,CUL,TUV,CSA,CE	200	41.30
92 X 92 X 20	AD0912MB-C71	BALL	12	0.16	1.92	2430	29.0	0.083	28.9	85	1	UL,TUV,CSA,CE	200	41.30
92 X 92 X 20	AD0912MB-C72	BALL	12	0.16	1.92	2430	29.0	0.083	28.9	85	2	TUV,CE	200	41.30
92 X 92 X 20	AD0912MB-C76	BALL	12	0.16	1.92	2430	29.0	0.083	28.9	85	6	CE	200	41.30
92 X 92 X 20	AD0912HB-C70	BALL	12	0.25	3.00	2740	32.8	0.106	32.8	85	0,6	UL,CUL,TUV,CSA,CE	200	41.30
92 X 92 X 20	AD0912HB-C71	BALL	12	0.25	3.00	2740	32.8	0.106	32.8	85	1	UL,TUV,CSA,CE	200	41.30
92 X 92 X 20	AD0912HB-C72	BALL	12	0.25	3.00	2740	32.8	0.106	32.8	85	2,3	TUV,CE	200	41.30
92 X 92 X 20	AD0912MS-C70	S	12	0.16	1.92	2430	29.0	0.083	28.9	85	0	UL,CUL,TUV,CSA,CE	200	41.30
92 X 92 X 20	AD0912MS-C71	S	12	0.16	1.92	2430	29.0	0.083	28.9	85	1	UL,TUV,CSA,CE	200	41.30
92 X 92 X 20	AD0912HS-C70	S	12	0.25	3.00	2740	32.8	0.106	32.8	85	0	UL,CUL,TUV,CSA,CE	200	41.30
92 X 92 X 20	AD0912HS-C71	S	12	0.25	3.00	2740	32.8	0.106	32.8	85	1	UL,TUV,CSA,CE	200	41.30
92 X 92 X 20	AD0912HS-C76	S	12	0.25	3.00	2740	32.8	0.106	32.8	85	6	CE	200	41.30
92 X 92 X 20	AD0924MX-C70	HYPRO	24	0.10	2.40	2430	29.0	2.110	28.9	78	0,1,2,3	UL,CUL,TUV,CSA,CE	200	41.30
92 X 92 X 20	AD0924HX-C70	HYPRO	24	0.14	3.36	2740	32.8	0.106	32.8	85	0	TUV,CSA,CE	200	41.30
92 X 92 X 20	AD0924MB-C70	BALL	24	0.10	2.40	2430	29.0	0.083	28.9	85	0	UL,CUL,TUV,CSA,CE	200	41.30
92 X 92 X 20	AD0924MB-C71	BALL	24	0.10	2.40	2430	29.0	0.083	28.9	85	1	UL,TUV,CSA,CE	200	41.30
92 X 92 X 20	AD0924HB-C70	BALL	24	0.14	3.36	2740	32.8	0.106	32.8	85	0	UL,CUL,TUV,CSA,CE	200	41.30
92 X 92 X 20	AD0924HB-C71	BALL	24	0.14	3.36	2740	32.8	0.106	32.8	85	1	UL,TUV,CSA,CE	200	41.30
92 X 92 X 20	AD0924HB-C73	BALL	24	0.14	3.36	2740	32.8	0.106	32.8	85	3	UL,CSA,CE	200	41.30
92 X 92 X 20	AD0924MS-C70	S	24	0.10	2.40	2430	29.0	0.083	28.9	85	0	UL,CUL,TUV,CSA,CE	200	41.30
92 X 92 X 20	AD0924MS-C71	S	24	0.10	2.40	2430	29.0	0.083	28.9	85	1	UL,TUV,CSA,CE	200	41.30
92 X 92 X 20	AD0924HS-C70	S	24	0.14	3.36	2740	32.8	0.106	32.8	85	0	UL,CUL,TUV,CSA,CE	200	41.30
92 X 92 X 20	AD0924HS-C71	S	24	0.14	3.36	2740	32.8	0.106	32.8	85	1	UL,TUV,CSA,CE	200	41.30
92 X 92 X 25	AD0912DX-A70GL	HYPRO	12	0.09	1.08	1600	28.0	0.060	22.0	101	0	UL,CUL,TUV,CE	200	52.36
92 X 92 X 25	AD0912DX-A71GL	HYPRO	12	0.07	0.84	1600	28.0	0.060	22.0	101	1	CE	200	52.36
92 X 92 X 25	AD0912LX-A70GL	HYPRO	12	0.12	1.44	2100	37.9	0.073	26.5	101	0	UL,CUL,TUV,CE	200	52.36
92 X 92 X 25	AD0912LX-A72GL	HYPRO	12	0.13	1.56	2200	35.9	0.097	29.3	101	2	UL,CUL,TUV,CE	200	52.36
92 X 92 X 25	AD0912LX-A76GL	HYPRO	12	0.13	1.56	2000	32.4	0.054	23.5	101	6	UL,CUL,CE	200	52.36
92 X 92 X 25	AD0912MX-A70GL	HYPRO	12	0.17	2.04	2400	43.5	0.094	31.3	101	0,2,3	UL,CUL,TUV,CE	200	52.36
92 X 92 X 25	AD0912HX-A70GL	HYPRO	12	0.25	3.00	2700	50.0	0.117	33.7	101	0,2,3	UL,CUL,TUV,CE	200	52.36
92 X 92 X 25	AD0912HX-A76GL	HYPRO	12	0.25	3.00	2700	50.0	0.117	33.7	101	6	UL,CUL,CE	200	52.36
92 X 92 X 25	AD0912UX-A71GL	HYPRO	12	0.39	4.68	3200	57.8	0.158	38.6	101	1,2	UL,CUL,TUV,CE	200	52.36

NOTE B=Ball S=Sleeve X=Hypro AT= Terminals AW= Wires

ALL RIGHTS RESERVED

ADDA USA
DC FAN SPECIFICATIONS

Frame Dimensions (mm)	Model Part Number	Bearing Type	Volts (V)	Current (A)	Power (W)	Speed (RPM)	Air Flow (CFM)	Pressure (Inches)	Noise (dB/A)	Weight (g)	Features Available	Safety Approvals	Units Per Box	Box Wt. (lbs.)
92 X 92 X 25	AD0912UX-A76GL	HYPRO	12	0.30	3.60	3300	60.0	0.166	39.4	101	6	UL,CUL,TUV,CE	200	52.36
92 X 92 X 25	AD0912DB-A71GL	BALL	12	0.07	0.84	1600	28.0	0.060	22.0	101	1	CE	200	52.36
92 X 92 X 25	AD0912LB-A70GL	BALL	12	0.13	1.56	2050	36.0	0.063	25.0	101	0	UL,CUL,TUV,CE	200	52.36
92 X 92 X 25	AD0912LB-A702GL	BALL	12	0.12	1.44	2300	41.6	0.087	29.8	101	2,3	UL,CUL,TUV,CE	200	52.36
92 X 92 X 25	AD0912LB-A76GL	BALL	12	0.12	1.44	2300	41.6	0.087	29.8	101	6	UL,CUL,CE	200	52.36
92 X 92 X 25	AD0912MB-A70GL	BALL	12	0.17	2.04	2600	47.2	0.108	32.7	101	0,1,2,3	UL,CUL,TUV,CE	200	52.36
92 X 92 X 25	AD0912MB-A76GL	BALL	12	0.17	2.04	2600	47.2	0.108	32.7	101	6	UL,CUL,CE	200	52.36
92 X 92 X 25	AD0912HB-A70GL	BALL	12	0.25	3.00	2900	52.5	0.133	35.0	101	0,1,2,3	UL,CUL,TUV,CE	200	52.36
92 X 92 X 25	AD0912HB-A76GL	BALL	12	0.25	3.00	2900	52.5	0.133	35.0	101	6	UL,CUL,CE	200	52.36
92 X 92 X 25	AD0912UB-A71GL	BALL	12	0.39	4.68	3300	60.0	0.166	39.4	101	1,2,3	UL,CUL,TUV,CE	200	52.36
92 X 92 X 25	AD0912UB-A76GL	BALL	12	0.39	4.68	3300	60.0	0.166	39.4	101	6	UL,CUL,TUV,CE	200	52.36
92 X 92 X 25	AD0912XB-A71GL	BALL	12	0.55	6.60	3800	67.0	0.198	43.9	101	1	CE	200	52.36
92 X 92 X 25	AD0912DS-A70GL	S	12	0.09	1.08	1600	28.0	0.060	22.0	101	0	UL,CUL,TUV,CE	200	52.36
92 X 92 X 25	AD0912DS-A71GL	S	12	0.07	1.08	1600	28.0	0.060	22.0	101	1	CE	200	52.36
92 X 92 X 25	AD0912LS-A70GL	S	12	0.13	1.56	2000	32.4	0.054	23.5	101	0	UL,CUL,TUV,CE	200	52.36
92 X 92 X 25	AD0912LS-A73GL	S	12	0.13	1.56	2100	37.9	0.073	26.5	101	3	UL,CUL,TUV,CE	200	52.36
92 X 92 X 25	AD0912LS-A76GL	S	12	0.13	1.56	2000	32.4	0.054	23.5	101	6	UL,CUL,CE	200	52.36
92 X 92 X 25	AD0912MS-A70GL	S	12	0.17	2.04	2350	43.0	0.087	31.0	101	0,3	UL,CUL,TUV,CE	200	52.36
92 X 92 X 25	AD0912MS-A76GL	S	12	0.17	2.04	2350	43.0	0.087	31.0	101	6	UL,CUL,CE	200	52.36
92 X 92 X 25	AD0912HS-A70GL	S	12	0.25	3.00	2700	50.0	0.117	33.7	101	0,1,2,3	UL,CUL,TUV,CE	200	52.36
92 X 92 X 25	AD0912HS-A76GL	S	12	0.25	3.00	2700	50.0	0.117	33.7	101	6	UL,CUL,CE	200	52.36
92 X 92 X 25	AD0912US-A70GL	S	12	0.39	4.68	3200	57.8	0.156	39.4	101	0	UL,CUL,TUV,CE	200	52.36
92 X 92 X 25	AD0912US-A71GL	S	12	0.39	4.68	3300	60.0	0.198	39.1	101	1,2	UL,CUL,TUV,CE	200	52.36
92 X 92 X 25	AD0912US-A76GL	S	12	0.30	3.60	3300	60.0	0.166	39.4	101	6	UL,CUL,TUV,CE	200	52.36
92 X 92 X 25	AD0924LX-A70GL	HYPRO	24	0.08	1.92	2100	37.9	0.073	26.5	101	0	UL,CUL,TUV,CE	200	52.36
92 X 92 X 25	AD0924MX-A70GL	HYPRO	24	0.12	2.88	2400	43.5	0.094	31.3	101	0,2	UL,CUL,TUV,CE	200	52.36
92 X 92 X 25	AD0924MX-A71GL	HYPRO	24	0.17	2.04	2700	43.2	0.140	35.0	101	1	UL,CUL,TUV,CE	200	52.36
92 X 92 X 25	AD0924HX-A70GL	HYPRO	24	0.15	3.60	2700	50.0	0.115	33.7	101	0	UL,CUL,TUV,CE	200	52.36
92 X 92 X 25	AD0924UX-A71GL	HYPRO	24	0.21	5.04	3200	57.8	0.156	38.6	101	1,2	UL,CUL,TUV,CE	200	52.36
92 X 92 X 25	AD0924UX-A73GL	HYPRO	24	0.21	5.04	3200	57.8	0.156	38.6	101	3	CE	200	52.36
92 X 92 X 25	AD0924LB-A70GL	BALL	24	0.08	1.92	2100	37.9	0.074	26.5	101	0	UL,CUL,TUV,CE	200	52.36
92 X 92 X 25	AD0924LB-A72GL	BALL	24	0.08	1.92	2300	41.6	0.086	29.8	101	2	UL,CUL,TUV,CE	200	52.36
92 X 92 X 25	AD0924LB-A76GL	BALL	24	0.08	1.92	2300	41.6	0.086	29.8	101	6	CE	200	52.36
92 X 92 X 25	AD0924MB-A70GL	BALL	24	0.12	2.88	2600	47.2	0.106	32.7	101	0,2	UL,CUL,TUV,CE	200	52.36
92 X 92 X 25	AD0924HB-A70GL	BALL	24	0.15	3.60	2900	52.5	0.131	35.0	101	0,1,2,3	UL,CUL,TUV,CE	200	52.36
92 X 92 X 25	AD0924HB-A76GL	BALL	24	0.15	3.60	2900	52.5	0.131	35.0	101	6	CE	200	52.36
92 X 92 X 25	AD0924UB-A72GL	BALL	24	0.21	5.04	3300	60.0	0.166	39.4	101	2	UL,CUL,TUV,CE	200	52.36
92 X 92 X 25	AD0924XB-A71GL	BALL	24	0.25	6.00	3800	66.9	0.186	42.6	101	1,2	CE	200	25.36
92 X 92 X 25	AD0924LS-A70GL	S	24	0.08	1.92	2100	37.9	0.073	26.5	101	0,2	CE	200	52.36
92 X 92 X 25	AD0924MS-A70GL	S	24	0.12	2.88	2400	43.5	0.094	31.3	101	0,2	UL,CUL,TUV,CE	200	52.36
92 X 92 X 25	AD0924HS-A70GL	S	24	0.15	3.60	2700	48.0	0.115	33.7	101	0	UL,CUL,TUV,CE	200	52.36
92 X 92 X 25	AD0924HS-A72GL	S	24	0.20	4.80	3000	48.4	0.169	38.0	101	2	UL,CUL,CE	200	52.36
92 X 92 X 25	AD0924HS-A73GL	S	24	0.20	4.80	3000	48.4	0.169	38.0	101	3	UL,CUL,TUV,CE	200	52.36

NOTE B=Ball S=Sleeve X=Hypro AT=Terminals AW=Wires

ALL RIGHTS RESERVED

**ADDA USA
DC FAN SPECIFICATIONS**

Frame Dimensions (mm)	Model Part Number	Bearing Type	Volts (V)	Current (A)	Power (W)	Speed (RPM)	Air Flow (CFM)	Pressure (Inches)	Noise (dB/A)	Weight (g)	Features Available	Safety Approvals	Units Per Box	Box Wt. (lbs.)
92 X 92 X 25	AD0924US-A70GL	S	24	0.21	5.04	3300	60.0	0.166	39.4	101	0	UL,CUL,TUV,CE	200	52.36
92 X 92 X 25	AD0924US-A71GL	S	24	0.21	5.04	3200	57.8	0.158	38.6	101	1	UL,CE	200	52.36
92 X 92 X 25	AD0924US-A72GL	S	24	0.21	5.04	3200	57.8	0.158	38.6	101	2	UL,CUL,TUV,CE	200	52.36
92 X 92 X 25	AD0948HB-A71GL	BALL	48	0.13	6.24	2900	52.5	0.133	35.0	101	1	UL,CUL,TUV,CE	200	52.36
92 X 92 X 25	AD0948UB-A71GL	BALL	48	0.16	7.68	3300	60.0	0.163	39.4	101	1	CE	200	52.36
92 X 92 X 25	AD0948HS-A72GL	S	48	0.07	3.36	2900	52.0	0.177	34.0	101	2	CE	200	52.36
120 X 120 X 25	AD1212LX-A71GL	HYPRO	12	0.24	2.88	1800	72.0	0.095	34.4	156	1	UL,CUL,CE	90	30.80
120 X 120 X 25	AD1212LX-A72GL	HYPRO	12	0.24	2.88	1800	72.0	0.095	34.4	156	2	UL,CUL,TUV,CE	90	30.80
120 X 120 X 25	AD1212MX-A71GL	HYPRO	12	0.34	4.08	2050	80.5	0.117	38.0	156	1	UL,CUL,TUV,CE	90	30.80
120 X 120 X 25	AD1212MX-A73GL	HYPRO	12	0.34	4.08	2050	80.5	0.117	38.0	156	3	CE	90	30.80
120 X 120 X 25	AD1212HX-A71GL	HYPRO	12	0.44	5.28	2200	85.2	0.136	39.1	156	1	UL,CUL,TUV,CE	90	30.80
120 X 120 X 25	AD1212HX-A73GL	HYPRO	12	0.44	5.28	2200	85.2	0.136	39.1	156	3	CE	90	30.80
120 X 120 X 25	AD1212UX-A71GL	HYPRO	12	0.50	6.00	2500	98.6	0.179	43.3	156	1	CE	90	30.80
120 X 120 X 25	AD1212LB-A71GL	BALL	12	0.24	2.88	1800	72.0	0.095	34.4	156	1,2	UL,CUL,TUV,CE	90	30.80
120 X 120 X 25	AD1212LB-A73GL	BALL	12	0.24	2.88	1800	72.0	0.095	34.4	156	3	CE	90	30.80
120 X 120 X 25	AD1212MB-A71GL	BALL	12	0.33	3.96	2050	80.5	0.117	38.0	156	1	UL,CUL,TUV,CE	90	30.80
120 X 120 X 25	AD1212MB-A72GL	BALL	12	0.33	3.96	2050	80.5	0.117	38.0	156	2	UL,CUL,CE	90	30.80
120 X 120 X 25	AD1212MB-A73GL	BALL	12	0.33	3.96	2050	80.5	0.117	38.0	156	3	CE	90	30.80
120 X 120 X 25	AD1212HB-A71GL	BALL	12	0.37	4.44	2200	85.2	0.136	39.1	156	1	UL,CUL,TUV,CE	90	30.80
120 X 120 X 25	AD1212HB-A72GL	BALL	12	0.37	4.44	2200	85.2	0.136	39.1	156	2	UL,CUL,CE	90	30.80
120 X 120 X 25	AD1212HB-A73GL	BALL	12	0.37	4.44	2200	85.2	0.136	39.1	156	3	CE	90	30.80
120 X 120 X 25	AD1212UB-A71GL	BALL	12	0.50	6.00	2500	98.6	0.179	43.3	156	1	TUV,CE	90	30.80
120 X 120 X 25	AD1212UB-A72GL	BALL	12	0.50	6.00	2500	98.6	0.179	43.3	156	2,3	CE	90	30.80
120 X 120 X 25	AD1212LS-A71GL	S	12	0.24	2.88	1800	72.0	0.095	34.4	156	1,3	UL,CUL,TUV,CE	90	30.80
120 X 120 X 25	AD1212MS-A71GL	S	12	0.34	4.08	2050	80.5	0.117	38.0	156	1,3	UL,CUL,TUV,CE	90	30.80
120 X 120 X 25	AD1212MS-A72GL	S	12	0.34	4.08	2050	80.5	0.117	38.0	156	2	UL,CUL,CE	90	30.80
120 X 120 X 25	AD1212HS-A71GL	S	12	0.44	5.28	220	85.2	0.136	39.1	158	1	UL,CUL,TUV,CE	90	30.80
120 X 120 X 25	AD1212HS-A72GL	S	12	0.44	5.28	220	85.2	0.136	39.1	158	2	UL,CUL,CE	90	30.80
120 X 120 X 25	AD1212HS-A73GL	S	12	0.44	5.28	220	85.2	0.136	39.1	158	3	CE	90	30.80
120 X 120 X 25	AD1212HS-A74GL	S	12	0.40	4.80	2200	85.2	0.134	39.1	156	4	TUV,CE	90	30.80
120 X 120 X 25	AD1212US-A71GL	S	12	0.50	6.00	2500	98.6	0.179	43.3	156	1,2,3	CE	90	30.80
120 X 120 X 25	AD1224LX-A71GL	HYPRO	24	0.14	3.36	1800	72.0	0.095	34.4	156	1	UL,CUL,TUV,CE	90	30.80
120 X 120 X 25	AD1224MX-A71GL	HYPRO	24	0.20	4.80	2050	80.5	0.117	38.0	156	1	UL,CUL,TUV,CE	90	30.80
120 X 120 X 25	AD1224HX-A71GL	HYPRO	24	0.24	5.76	2200	85.2	0.136	39.1	156	1,2	UL,CUL,TUV,CE	90	30.80
120 X 120 X 25	AD1224HX-A73GL	HYPRO	24	0.24	5.76	2200	85.2	0.136	39.1	156	3	CE	90	30.80
120 X 120 X 25	AD1224UX-A72GL	HYPRO	24	0.25	6.00	2500	98.6	0.176	43.3	156	2	CE	90	30.80
120 X 120 X 25	AD1224LB-A71GL	BALL	24	0.14	3.36	1800	72.0	0.095	34.3	156	1,2	UL,CUL,TUV,CE	90	30.80
120 X 120 X 25	AD1224MB-A71GL	BALL	24	0.17	4.08	2050	80.5	0.117	38.0	156	1	UL,CUL,TUV,CE	90	30.80
120 X 120 X 25	AD1224HB-A71GL	BALL	24	0.19	4.56	2200	85.2	0.136	39.1	156	1,2,3	UL,CUL,TUV,CE	90	30.80
120 X 120 X 25	AD1224UB-A71GL	BALL	24	0.25	6.00	2500	98.6	0.176	43.3	156	1	TUV,CE	90	30.80
120 X 120 X 25	AD1224UB-A72GL	BALL	24	0.25	6.00	2500	98.6	0.176	43.3	156	2,3	CE	90	30.80
120 X 120 X 25	AD1224LS-A71GL	S	24	0.14	3.36	1800	72.0	0.095	34.4	156	1	UL,CUL,TUV,CE	90	30.80
120 X 120 X 25	AD1224MS-A71GL	S	24	0.20	4.80	2050	80.5	0.117	38.0	156	1	UL,CUL,TUV,CE	90	30.80

NOTE B=Ball S=Sleeve X=Hypro AT=Terminals AW=Wires

ALL RIGHTS RESERVED

**ADDA USA
DC FAN SPECIFICATIONS**

Frame Dimensions (mm)	Model Part Number	Bearing Type	Volts (V)	Current (A)	Power (W)	Speed (RPM)	Air Flow (CFM)	Pressure (Inches)	Noise (dB/A)	Weight (g)	Features Available	Safety Approvals	Units Per Box	Box Wt. (lbs.)
120 X 120 X 25	AD1224HS-A71GL	S	24	0.24	5.76	2200	85.2	0.136	39.1	156	1	UL,CUL,TUV,CE	90	30.80
120 X 120 X 25	AD1224HS-A73GL	S	24	0.24	5.76	2200	85.2	0.136	39.1	156	3	CE	90	30.80
120 X 120 X 25	AD1224US-A71GL	S	24	0.25	6.00	2500	98.6	0.176	43.3	156	1	CE	90	30.80
120 X 120 X 25	AD1248HB-A71GL	BALL	48	0.25	9.60	2200	85.2	0.136	39.1	156	1	CE	90	30.80
120 X 120 X 32	AD2512LX	HYPRO	12	0.15	1.80	1200	12.0	0.109	34.3	276	0	TUV,CE		
120 X 120 X 32	AD2512MX	HYPRO	12	0.60	7.20	2300	23.7	0.621	51.1	276	0	UL,CUL,CE		
120 X 120 X 32	AD2512LB	BALL	12	0.15	1.80	1200	12.0	0.109	34.3	276	0,3	TUV,CE		
120 X 120 X 32	AD2512MB	BALL	12	0.60	7.20	2300	23.7	0.621	51.1	276	0	UL,CUL,TUV,CE		
120 X 120 X 32	AD2512MB	BALL	12	0.60	7.20	2300	23.7	0.621	51.1	276	2	TUV,CE		
120 X 120 X 32	AD2512MB	BALL	12	0.60	7.20	2300	23.7	0.621	51.1	276	3	CE		
120 X 120 X 32	AD2512HB	BALL	12	0.65	7.80	2500	25.2	0.640	51.0	276	0,3	CE		
120 X 120 X 32	AD2512UB	BALL	12	1.00	8.00	3200	33.1	1.121	55.8	276	0,2,3	CE		
120 X 120 X 32	AD2512LS	S	12	0.15	1.80	1200	12.0	0.109	34.3	276	0	TUV,CE		
120 X 120 X 32	AD2512MS	S	12	0.60	7.20	2300	23.7	0.621	51.1	276	0	TUV,CE		
120 X 120 X 32	AD2512HS	S	12	0.65	7.80	2500	25.2	0.640	51.0	276	0	CE		
120 X 120 X 32	AD2512US	S	12	1.00	8.00	3200	33.1	1.121	55.8	276	0	CE		
120 X 120 X 32	AD2524MX	HYPRO	24	0.40	9.60	2300	23.7	0.621	51.1	276	0	UL,TUV,CE		
120 X 120 X 32	AD2524MB	BALL	24	0.40	9.60	2300	23.7	0.621	51.1	276	0	UL,CUL,CSA,TUV,CE		
120 X 120 X 32	AD2524HB	BALL	24	0.43	9.80	2500	25.2	0.640	51.0	276	0	CE		
120 X 120 X 32	AD2524UB	BALL	24	0.50	9.80	2800	29.4	0.800	52.5	276	0	CE		
120 X 120 X 32	AD2524MS	S	24	0.40	9.60	2300	23.7	0.621	51.1	276	0	UL,CSA,TUV,CE		
120 X 120 X 32	AD2524US	S	24	0.50	9.80	2800	29.4	0.800	52.5	276	0	CE		
120 X 120 X 38	AD1212LX-F51	HYPRO	12	0.24	2.88	1950	72.3	0.135	32.9	297	1	UL,CUL,TUV,CE	40	33.66
120 X 120 X 38	AD1212LX-F53	HYPRO	12	0.24	2.88	1950	72.3	0.135	32.9	297	3	CE	40	33.66
120 X 120 X 38	AD1212MX-F51	HYPRO	12	0.35	4.20	2540	94.0	0.244	41.0	297	1	UL,CUL,CSA,CE	40	33.66
120 X 120 X 38	AD1212MX-F53	HYPRO	12	0.35	4.20	2540	94.0	0.244	41.0	297	3	CSA,CE	40	33.66
120 X 120 X 38	AD1212HX-F51	HYPRO	12	0.50	6.00	2800	104.8	0.270	42.8	297	1,4	UL,CUL,TUV,CSA,CE	40	33.66
120 X 120 X 38	AD1212HX-F52	HYPRO	12	0.50	6.00	2800	104.8	0.270	42.8	297	2	CSA,CE	40	33.66
120 X 120 X 38	AD1212HX-Y51	HYPRO	12	0.40	4.80	2750	108.0	0.215	43.3	213	1	CE	40	33.66
120 X 120 X 38	AD1212LB-F51	BALL	12	0.24	2.88	1950	72.3	0.135	32.9	297	1,3	UL,CUL,TUV,CE	40	33.66
120 X 120 X 38	AD1212LB-F52	BALL	12	0.24	2.88	1950	72.3	0.135	32.9	297	2	UL,CE	40	33.66
120 X 120 X 38	AD1212MB-F51	BALL	12	0.35	4.20	2540	94.0	0.244	41.0	297	1	UL,CUL,TUV,CSA,CE	40	33.66
120 X 120 X 38	AD1212MB-F52	BALL	12	0.35	4.20	2540	94.0	0.244	41.0	297	2,3,4,7	CSA,CE	40	33.66
120 X 120 X 38	AD1212HB-F51	BALL	12	0.50	6.00	2800	104.8	0.270	42.8	297	1,3	UL,CUL,TUV,CSA,CE	40	33.66
120 X 120 X 38	AD1212HB-F52	BALL	12	0.50	6.00	2800	104.8	0.270	42.8	297	2,4	UL,CUL,TUV,CE	40	33.66
120 X 120 X 38	AD1212HB-F57	BALL	12	0.50	6.00	2800	104.8	0.270	42.8	297	7	CSA,CE	40	33.66
120 X 120 X 38	AD1212HB-Y51	BALL	12	0.40	4.80	2750	108.0	0.215	43.3	213	1,3	CE	40	33.66
120 X 120 X 38	AD1212UB-F51	BALL	12	0.07	0.84	3200	122.0	0.394	48.0	297	1,2,4	CE	40	33.66
120 X 120 X 38	AD1212UB-F53	BALL	12	0.07	0.84	3200	122.0	0.394	48.0	297	3	UL,CUL,CE	40	33.66
120 X 120 X 38	AD1212LS-F51	S	12	0.24	2.88	1950	72.3	0.135	32.9	297	1	UL,CUL,TUV,CE	40	33.66
120 X 120 X 38	AD1212MS-F51	S	12	0.35	4.20	2540	94.0	0.244	41.0	297	1	UL,CUL,TUV,CSA,CE	40	33.66
120 X 120 X 38	AD1212MS-F52	S	12	0.35	4.20	2540	94.0	0.244	41.0	297	2,3,4,7	CSA,CE	40	33.66
120 X 120 X 38	AD1212HS-F51	S	12	0.50	6.00	2800	104.8	0.270	42.8	297	1,4	UL,CUL,TUV,CSA,CE	40	33.66

NOTE B=Ball S=Sleeve X=Hypro AT=Terminals AW=Wires

ALL RIGHTS RESERVED

**ADDA USA
DC FAN SPECIFICATIONS**

Frame Dimensions (mm)	Model Part Number	Bearing Type	Volts (V)	Current (A)	Power (W)	Speed (RPM)	Air Flow (CFM)	Pressure (Inches)	Noise (dB/A)	Weight (g)	Features Available	Safety Approvals	Units Per Box	Box Wt. (lbs.)
120 X 120 X 38	AD1212HS-F52	S	12	0.50	6.00	2800	104.8	0.270	42.8	297	2,3,7	CSA,CE	40	33.66
120 X 120 X 38	AD1212US-F51	S	12	0.70	8.40	3200	122.0	0.394	48.0	297	1	CE	40	33.66
120 X 120 X 38	AD1224MX-F51	HYPRO	24	0.23	5.52	2540	94.0	0.244	41.0	297	1	UL,CUL,TUV,CSA,CE	40	33.66
120 X 120 X 38	AD1224HX-F51	HYPRO	24	0.32	7.68	2800	104.8	0.270	42.8	297	1,2	UL,CUL,TUV,CSA,CE	40	33.66
120 X 120 X 38	AD1224UX-F51	HYPRO	24	0.40	9.60	3200	122.0	0.394	48.0	297	1	UL,CUL,CE	40	33.66
120 X 120 X 38	AD1224UX-F52F	HYPRO	24	0.40	9.60	3200	122.0	0.394	48.0	297	2	CE	40	33.66
120 X 120 X 38	AD1224LB-F51	BALL	24	0.14	3.36	1950	72.3	0.135	32.9	297	1	UL,CUL,TUV,CE	40	33.66
120 X 120 X 38	AD1224MB-F51	BALL	24	0.23	5.52	2540	94.0	0.244	41.0	297	1,3	UL,CUL,TUV,CSA,CE	40	33.66
120 X 120 X 38	AD1224MB-F52	BALL	24	0.23	5.52	2540	94.0	0.244	41.0	297	2	UL,CSA,CE	40	33.66
120 X 120 X 38	AD1224MB-F54	BALL	24	0.23	5.52	2540	94.0	0.244	41.0	297	4	CSA,CE	40	33.66
120 X 120 X 38	AD1224HB-F51	BALL	24	0.32	7.68	2800	104.8	0.270	42.8	297	1	UL,CUL,TUV,CSA,CE	40	33.66
120 X 120 X 38	AD1224HB-F52	BALL	24	0.32	7.68	2800	104.8	0.270	42.8	297	2,3	UL,CSA,TUV,CE	40	33.66
120 X 120 X 38	AD1224HB-F54	BALL	24	0.32	7.68	2800	104.8	0.270	42.8	297	4,7	CSA,CE	40	33.66
120 X 120 X 38	AD1224UB-F51	BALL	24	0.40	9.60	3200	122.0	0.394	48.0	297	1,2,3	UL,CUL,CE	40	33.66
120 X 120 X 38	AD1224LS-F51	S	24	0.14	3.36	1950	72.3	0.135	32.9	297	1	UL,CUL,TUV,CE	40	33.66
120 X 120 X 38	AD1224MS-F51	S	24	0.23	5.52	2540	94.0	0.244	41.0	297	1	UL,CUL,TUV,CSA,CE	40	33.66
120 X 120 X 38	AD1224MS-F52	S	24	0.23	5.52	2540	94.0	0.244	41.0	297	2,3,4	CSA,CE	40	33.66
120 X 120 X 38	AD1224HS-F51	S	24	0.32	7.68	2800	104.8	0.270	42.8	297	1	UL,CUL,TUV,CSA,CE	40	33.66
120 X 120 X 38	AD1224HS-F52	S	24	0.32	7.68	2800	104.8	0.270	42.8	297	2,3,4	CSA,CE	40	33.66
120 X 120 X 38	AD1224US-F51	S	24	0.40	9.60	3200	122.0	0.394	48.0	297	1	UL,CUL,CE	40	33.66
120 X 120 X 38	AD1248MX-F52	HYPRO	48	0.14	6.72	2540	94.0	0.244	41.0	297	2	UL,CE	40	33.66
120 X 120 X 38	AD1248HX-F51	HYPRO	48	0.20	9.60	2800	104.8	0.270	42.8	297	1	UL,CUL,TUV,CSA,CE	40	33.66
120 X 120 X 38	AD1248HX-F52	HYPRO	48	0.20	9.60	2800	104.8	0.270	42.8	297	2	UL,CUL,CSA,CE	40	33.66
120 X 120 X 38	AD1248LS-F51	S	48	0.10	4.80	1950	72.3	0.135	32.9	297	1	UL,CUL,TUV,CSA,CE	40	33.66
120 X 120 X 38	AD1248MS-F51	S	48	0.14	6.72	2540	94.0	0.244	41.0	297	1	UL,CUL,TUV,CSA,CE	40	33.66
120 X 120 X 38	AD1248MS-F52	S	48	0.14	6.72	2540	94.0	0.244	41.0	297	2	UL,CE	40	33.66
120 X 120 X 38	AD1248LB-F51	BALL	48	0.10	4.80	1950	72.3	0.135	32.9	297	1,3	UL,CUL,TUV,CSA,CE	40	33.66
120 X 120 X 38	AD1248MB-F51	BALL	48	0.14	6.72	2540	94.0	0.244	41.0	297	1	UL,CUL,TUV,CSA,CE	40	33.66
120 X 120 X 38	AD1248MB-F52	BALL	48	0.14	6.72	2540	94.0	0.244	41.0	297	2,3	CE	40	33.66
120 X 120 X 38	AD1248HB-F51	BALL	48	0.20	9.60	2800	104.8	0.270	42.8	297	1,2	UL,CUL,TUV,CSA,CE	40	33.66
120 X 120 X 38	AD1248HB-F53	BALL	48	0.20	9.60	2800	104.8	0.270	42.8	297	3	UL,CE	40	33.66
120 X 120 X 38	AD1248HB-F54	BALL	48	0.20	9.60	2800	104.8	0.270	42.8	297	4	CE	40	33.66
120 X 120 X 38	AD1248HB-Y56	BALL	48	0.13	6.24	2750	108.0	0.215	43.3	213	6	CE	40	33.66
120 X 120 X 38	AD1248UB-F51	BALL	48	0.23	9.80	3200	122.0	0.394	48.0	297	1,3	CE	40	33.66
120 X 120 X 38	AD1248HS-F51	S	48	0.20	9.60	2800	104.8	0.270	42.8	297	1,2	UL,CUL,TUV,CSA,CE	40	33.66
120 X 120 X 38	AD1248HS-F53	S	48	0.20	9.60	2800	104.8	0.270	42.8	297	3	CE	40	33.66

NOTE B=Ball S=Sleeve X= Hypro AT= Terminals AW= Wires

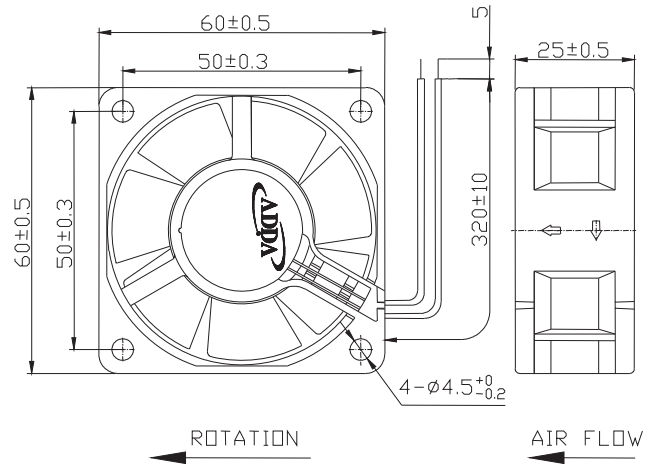
ALL RIGHTS RESERVED



AQ6025 SERIES



External Dimensions



Frame: Plastic(UL:94V-0)
 Impeller: Plastic(UL:94V-0)
 Lead wire: UL1571AWG24

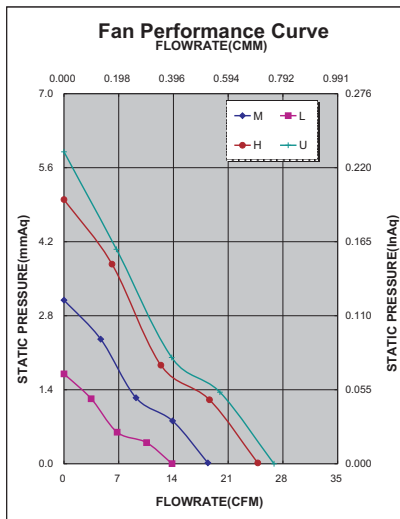
Specifications(Nominal)

*Noise is measured at the distance of one (1) meter from the axis of intake.

Bearing type: ☉=Ball ⚙=Sleeve ●=Hypro bearing

Frame size (mm)	Model No.	Bearing System Type	Rated Voltage (VDC)	Current (A)	Power (W)	Rated Speed (rpm)	Maximum AirFlow (CMM)	Maximum AirFlow (CFM)	Maximum Pressure (InAq)	Maximum Pressure (mmAq)	*Noise Level (dB/A)	Weight (g)
60x60x25	AQ0612LB-A70GL(T)	☉	12	0.07	0.84	2500	0.374	13.20	0.063	1.60	18.1	68
	AQ0612MB-A71GL(T)	☉	12	0.10	1.20	3500	0.510	18.18	0.122	3.00	28.6	
	AQ0612HB-A71GL(T)	☉	12	0.16	1.92	4500	0.708	24.48	0.200	4.78	35.2	
	AQ0612UB-A71GL(T)	☉	12	0.19	2.28	5000	0.765	27.00	0.230	5.84	40.0	
	AQ0624HB-A70GL(T)	☉	24	0.12	2.88	4500	0.708	24.48	0.200	4.78	35.2	
	AQ0624UB-A71GL(T)	☉	24	0.14	3.36	5000	0.765	27.00	0.230	5.84	40.0	

Specifications subject to change without notice.



*Motor protective circuit and third lead wire functions

0	1	2	3	4	6	7	8	9	A	B
✓	✓	✓	✓		✓					

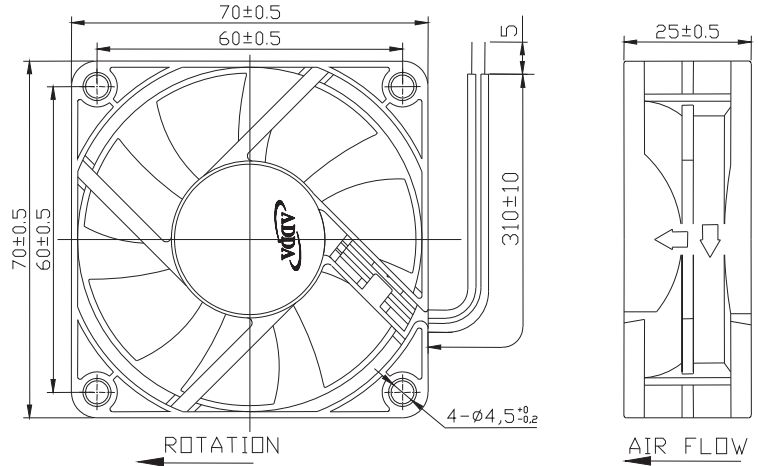
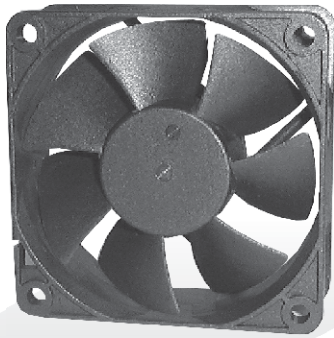
*Safety approvals

				✓



AQ7025 SERIES

External Dimensions



Frame:Plastic(UL:94V-0)
 Impeller:Plastic(UL:94V-0)
 Lead wire:UL1007AWG24

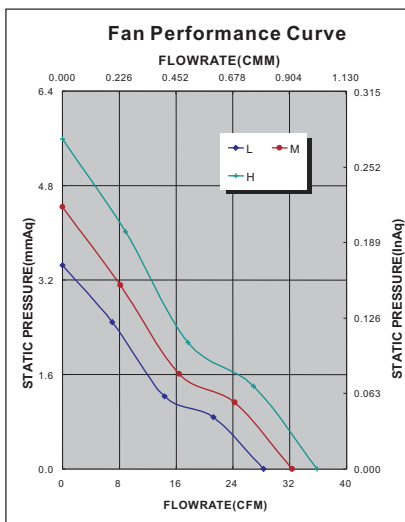
Specifications(Nominal)

*Noise is measured at the distance of one (1) meter from the axis of intake.

Bearing type: ◎=Ball ※=Sleeve ●=Hypro bearing

Frame size (mm)	Model No.	Bearing System Type	Rated Voltage (VDC)	Current (A)	Power (W)	Rated Speed (rpm)	Maximum AirFlow (CMM)	Maximum AirFlow (CFM)	Maximum Pressure (InAq)	Maximum Pressure (mmAq)	*Noise Level (dB/A)	Weight (g)
70x70x25	AQ0712LB-A70GL(T)	◎	12	0.10	1.20	3300	0.798	28.20	0.150	3.81	31.6	61.0
	AQ0712MB-A70GL(T)	◎	12	0.12	1.44	3800	0.914	32.30	0.176	4.47	33.6	
	AQ0712HB-A70GL(T)	◎	12	0.18	2.16	4200	1.005	35.50	0.217	5.51	38.0	

Specifications subject to change without notice.



*Motor protective circuit and third lead wire functions

0	1	2	3	4	6	7	8	9	A	B
✓					✓					

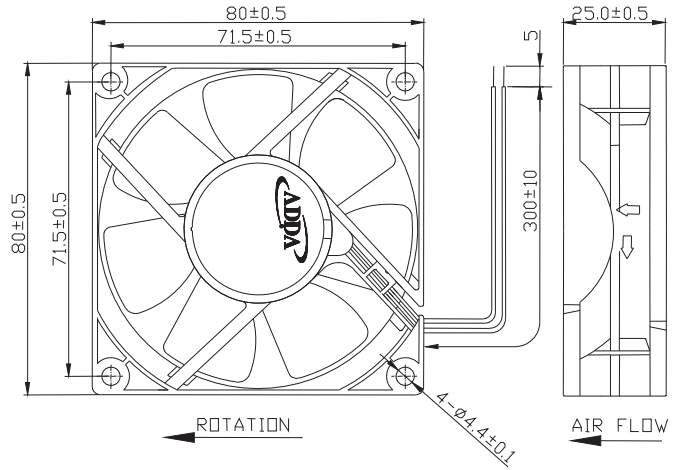
*Safety approvals

				✓



AQ8025 SERIES

External Dimensions



Frame:Plastic(UL:94V-0)
 Impeller:Plastic(UL:94V-0)
 Lead wire:UL1007AWG24

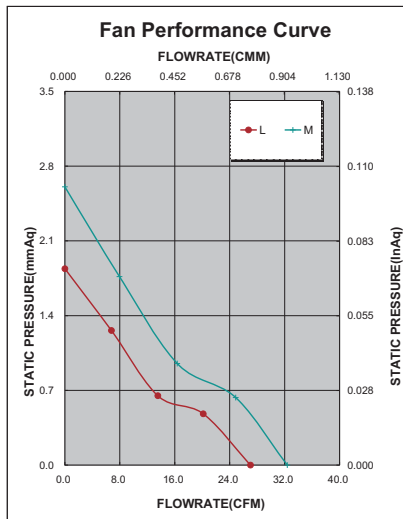
Specifications(Nominal)

*:Noise is measured at the distance of one (1) meter from the axis of intake.

Bearing type: ◎=Ball ※=Sleeve ●=Hypro bearing

Frame size (mm)	Model No.	Bearing System Type	Rated Voltage (VDC)	Current (A)	Power (W)	Rated Speed (rpm)	Maximum AirFlow (CMM)	Maximum AirFlow (CFM)	Maximum Pressure (InAq)	Maximum Pressure (mmAq)	*Noise Level (dB/A)	Weight (g)
80x80x25	AQ0812LB-A70GL(T)	◎	12	0.08	0.96	2100	0.764	27.019	0.072	1.828	22.3	86.0
	AQ0812MB-A70GL(T)	◎	12	0.12	1.44	2500	0.916	32.384	0.102	2.590	29.4	
	AQ0824LB-A70GL(T)	◎	24	0.04	0.96	2100	0.764	27.019	0.072	1.828	22.3	
	AQ0824MB-A70GL(T)	◎	24	0.07	1.68	2500	0.916	32.384	0.102	2.590	29.4	

Specifications subject to change without notice.



*Motor protective circuit and third lead wire functions

0	1	2	3	4	6	7	8	9	A	B
✓					✓					

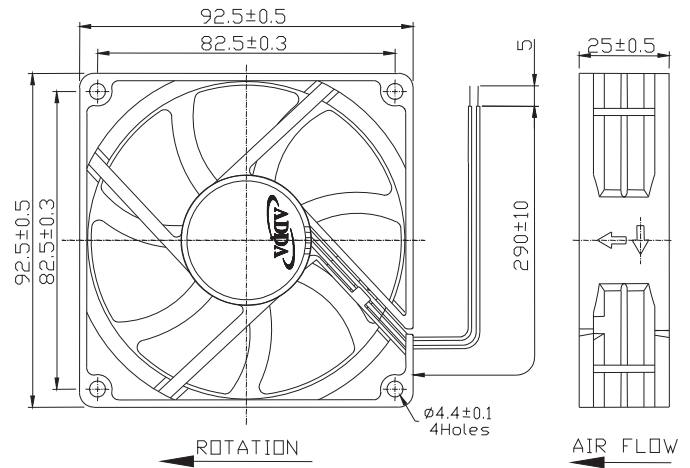
*Safety approvals

✓	✓		✓	✓



AQ9225 SERIES

External Dimensions



Frame:Plastic(UL:94V-0)
 Impeller:Plastic(UL:94V-0)
 Lead wire:UL1007AWG24

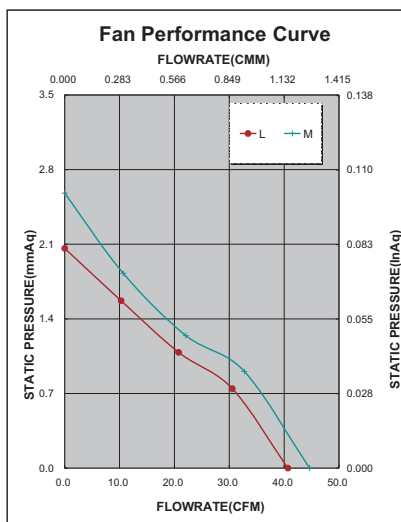
Specifications(Nominal)

*Noise is measured at the distance of one (1) meter from the axis of intake.

Bearing type: ⊙=Ball ⊛=Sleeve ●=Hypro bearing

Frame size (mm)	Model No.	Bearing System Type	Rated Voltage (VDC)	Current (A)	Power (W)	Rated Speed (rpm)	Maximum AirFlow (CMM)	Maximum AirFlow (CFM)	Maximum Pressure (InAq)	Maximum Pressure (mmAq)	*Noise Level (dB/A)	Weight (g)
92x92x25	AQ0912LB-A70GL(T)	⊙	12	0.10	1.20	2100	1.151	40.689	0.081	2.057	29.2	92.0
	AQ0912MB-A70GL(T)	⊙	12	0.15	1.80	2400	1.263	44.655	0.101	2.565	31.2	

Specifications subject to change without notice.



*Motor protective circuit and third lead wire functions

0	1	2	3	4	6	7	8	9	A	B
✓					✓					

*Safety approvals

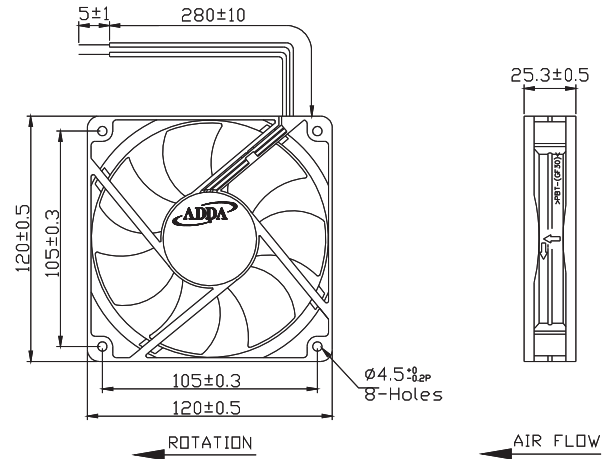
			✓	✓



AQ12025 SERIES



External Dimensions



Frame:Plastic(UL:94V-0)
 Impeller:Plastic(UL:94V-0)
 Lead wire:UL1007AWG24

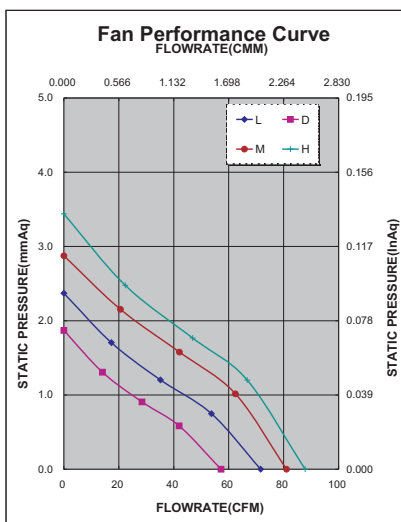
Specifications(Nominal)

*Noise is measured at the distance of one (1) meter from the axis of intake.

Bearing type: ◎=Ball ※=Sleeve ●=Hypro bearing

Frame size (mm)	Model No.	Bearing System Type	Rated Voltage (VDC)	Current (A)	Power (W)	Rated Speed (rpm)	Maximum AirFlow (CMM)	Maximum AirFlow (CFM)	Maximum Pressure (InAq)	Maximum Pressure (mmAq)	*Noise Level (dB/A)	Weight (g)
120x120x25	AQ1212DB-A71GL(N)	◎	12	0.11	1.32	1500	1.618	57.205	0.074	1.879	27.2	156.0
	AQ1212LB-A71GL(N)	◎	12	0.15	1.80	1800	2.032	71.806	0.093	2.362	34.3	
	AQ1212MB-A71GL(N)	◎	12	0.16	1.92	2050	2.293	81.054	0.113	2.870	38.0	
	AQ1212HB-A71GL(N)	◎	12	0.29	3.48	2200	2.486	87.870	0.134	3.403	39.1	
	AQ1224DB-A71GL(N)	◎	24	0.06	1.44	1500	1.618	57.205	0.074	1.879	27.2	
	AQ1224LB-A71GL(N)	◎	24	0.08	1.92	1800	2.032	71.806	0.093	2.362	34.3	
	AQ1224MB-A71GL(N)	◎	24	0.11	2.64	2050	2.293	81.054	0.113	2.870	38.0	
	AQ1224HB-A71GL(N)	◎	24	0.13	3.12	2200	2.486	87.870	0.134	3.403	39.1	

Specifications subject to change without notice.



*Motor protective circuit and third lead wire functions

0	1	2	3	4	6	7	8	9	A	B
	✓	✓	✓							

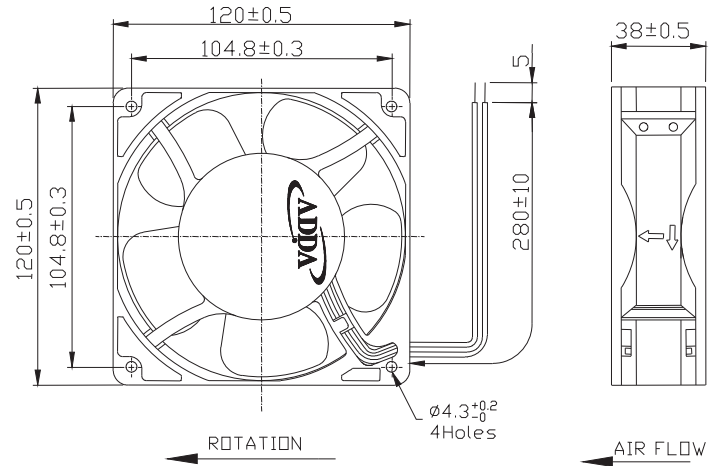
*Safety approvals

✓	✓		✓	✓



AQ12038 SERIES

External Dimensions



Frame:Plastic(UL:94V-0)
 Impeller:Plastic(UL:94V-0)
 Lead wire:UL1007AWG24

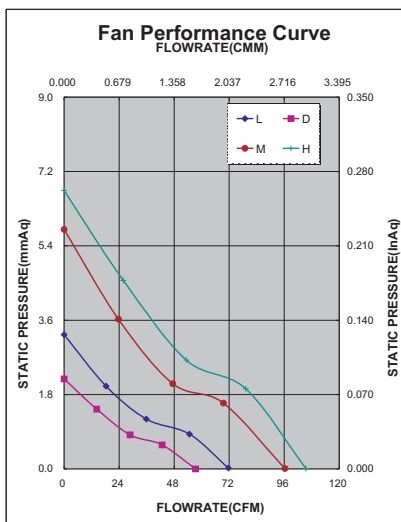
Specifications(Nominal)

*Noise is measured at the distance of one (1) meter from the axis of intake.

Bearing type: ⊙=Ball ⊛=Sleeve ●=Hypro bearing

Frame size (mm)	Model No.	Bearing System Type	Rated Voltage (VDC)	Current (A)	Power (W)	Rated Speed (rpm)	Maximum AirFlow (CMM)	Maximum AirFlow (CFM)	Maximum Pressure (InAq)	Maximum Pressure (mmAq)	*Noise Level (dB/A)	Weight (g)
120x120x38	AQ1212DB-F51(FN)	⊙	12	0.11	1.32	1500	1.621	57.292	0.085	2.159	28.4	290.0
	AQ1212LB-F51(FN)	⊙	12	0.19	2.28	1950	2.027	71.635	0.128	3.251	36.2	
	AQ1212MB-F51(FN)	⊙	12	0.33	3.96	2540	2.725	96.300	0.228	5.791	45.0	
	AQ1212HB-F51(FN)	⊙	12	0.45	5.40	2800	2.984	105.461	0.265	6.731	46.7	
	AQ1224DB-F51(FN)	⊙	24	0.08	1.92	1500	1.621	57.292	0.085	2.159	28.4	
	AQ1224LB-F51(FN)	⊙	24	0.12	2.88	1950	2.027	71.635	0.128	3.251	36.2	
	AQ1224MB-F51(FN)	⊙	24	0.19	4.56	2540	2.725	96.300	0.228	5.791	45.0	
	AQ1224HB-F51(FN)	⊙	24	0.24	5.76	2800	2.984	105.461	0.265	6.731	46.7	
	AQ1248LB-F51(FN)	⊙	48	0.06	2.88	1950	2.027	71.635	0.128	3.251	36.2	
	AQ1248MB-F51(FN)	⊙	48	0.10	4.80	2540	2.725	96.300	0.228	5.791	45.0	
AQ1248HB-F51(FN)	⊙	48	0.18	8.64	2800	2.984	105.461	0.265	6.731	46.7		

Specifications subject to change without notice.



*Motor protective circuit and third lead wire functions

0	1	2	3	4	6	7	8	9	A	B
	✓	✓	✓							

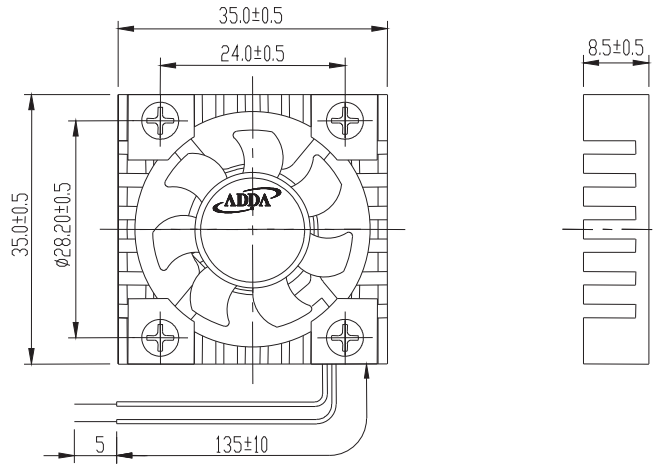
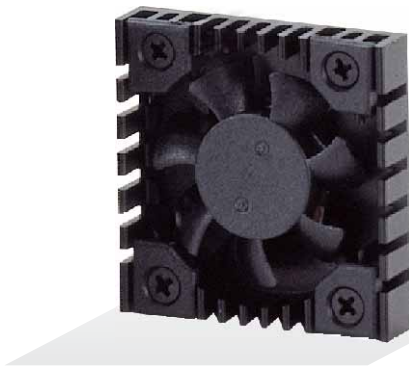
*Safety approvals

✓	✓		✓	✓



AP3508 SERIES

External Dimensions



Frame: Aluminum alloy
 Impeller: Plastic (UL:94V-0)
 Lead wire: UL1571AWG28

Specifications(Nominal)

*Noise is measured at the distance of one (1) meter from the axis of intake.

Bearing type: ○=Ball ※=Sleeve ●=Hypro bearing

Frame size (mm)	Model No.	Bearing System Type	Rated Voltage (VDC)	Current (A)	Power (W)	Rated Speed (rpm)	Maximum AirFlow (CMM)	Maximum AirFlow (CFM)	Maximum Pressure (InAq)	Maximum Pressure (mmAq)	*Noise Level (dB/A)	Weight (g)
35x35x08	AP3505LX-J70	●	5	0.07	0.35	7500	0.071	2.50	0.082	2.05	20.0	6.0
	AP3505MX-J70	●	5	0.11	0.55	9000	0.093	3.30	0.138	3.45	27.9	
	AP3505HX-J70	●	5	0.13	0.65	10500	0.116	4.10	0.151	3.78	32.0	
	AP3512MX-J70	●	12	0.06	0.72	9000	0.093	3.30	0.138	3.45	27.9	
	AP3512HX-J70	●	12	0.09	1.08	10500	0.116	4.10	0.151	3.78	32.0	

Specifications subject to change without notice.

The specification for bearing type is for reference only, for more bearing types information, please contact with your ADDA sales representative, thanks!!
 (網頁上呈現產品軸承資訊均以參考為主，若需其他產品資訊請聯絡您在ADDA的業務代表，謝謝!!)

*Motor protective circuit and third lead wire functions

0	1	2	3	4	6	7	8	9	A	B
✓										

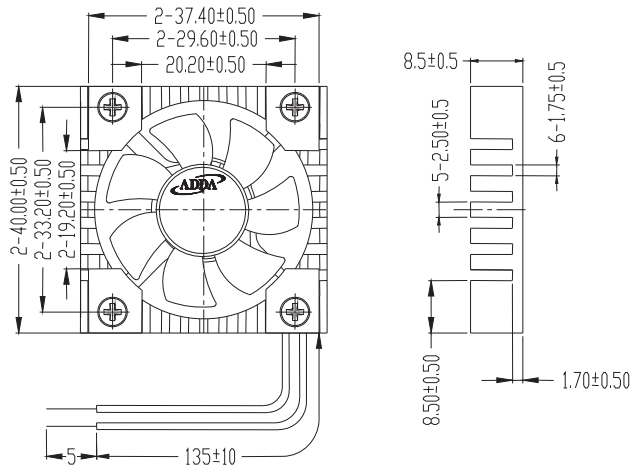
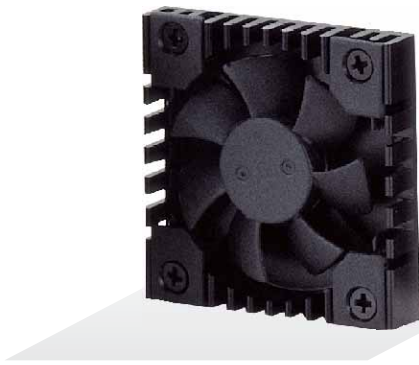
*Safety approvals

✓	✓		✓	✓



AP4008 SERIES

External Dimensions



Frame:Plastic(UL:94V-0)
 Impeller:Plastic(UL:94V-0)
 Lead wire:UL1571AWG28

Specifications(Nominal)

*:Noise is measured at the distance of one (1) meter from the axis of intake.

Bearing type: ◎=Ball ※=Sleeve ●=Hypro bearing

Frame size (mm)	Model No.	Bearing System Type	Rated Voltage (VDC)	Current (A)	Power (W)	Rated Speed (rpm)	Maximum AirFlow (CMM) (CFM)		Maximum Pressure (InAq) (mmAq)		*Noise Level (dB/A)	Weight (g)
40x40x08	AP0405MX-J70	●	5	0.10	0.50	7000	0.133	4.70	0.111	2.78	28.0	15.0
	AP0412MX-J70	●	12	0.06	0.72	7000	0.133	4.70	0.111	2.78	28.0	

Specifications subject to change without notice.

The specification for bearing type is for reference only , for more bearing types information, please contact with your ADDA sales representative, thanks!!
 (網頁上呈現產品軸承資訊均以參考為主，若需其他產品資訊請聯絡您在ADDA的業務代表，謝謝!!)

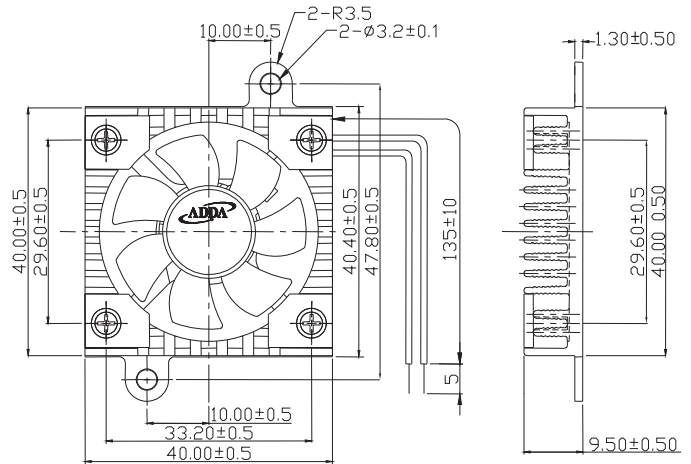
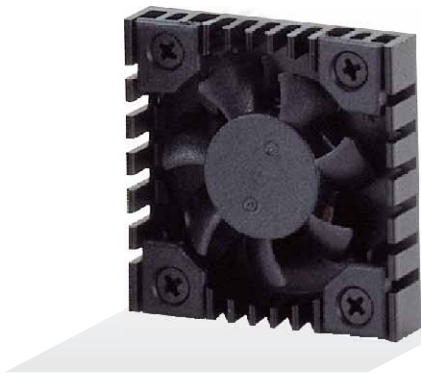
*Motor protective circuit and third lead wire functions

0	1	2	3	4	6	7	8	9	A	B
✓			✓							

*Safety approvals

				✓

External Dimensions



Frame:Plastic(UL:94V-0)
 Impeller:Plastic(UL:94V-0)
 Lead wire:UL1571AWG28

Specifications(Nominal)

*Noise is measured at the distance of one (1) meter from the axis of intake.

Bearing type: ⊙=Ball ⊛=Sleeve ●=Hypro bearing

Frame size (mm)	Model No.	Bearing System Type	Rated Voltage (VDC)	Current (A)	Power (W)	Rated Speed (rpm)	Maximum AirFlow (CMM) (CFM)		Maximum Pressure (InAq) (mmAq)		*Noise Level (dB/A)	Weight (g)
40x40x10	AP0405MX-G70	●	5	0.13	0.65	8000	0.133	4.70	0.111	2.78	28.0	
	AP0412LX-G70	●	12	0.05	0.60	6500	0.099	3.50	0.063	1.58	19.0	19.2
	AP0412MX-G70	●	12	0.07	0.84	8000	0.133	4.70	0.111	2.78	28.0	






Specifications subject to change without notice.

The specification for bearing type is for reference only , for more bearing types information, please contact with your ADDA sales representative, thanks!!
 (網頁上呈現產品軸承資訊均以參考為主，若需其他產品資訊請聯絡您在ADDA的業務代表，謝謝!!)

*Motor protective circuit and third lead wire functions

0	1	2	3	4	6	7	8	9	A	B
✓			✓							

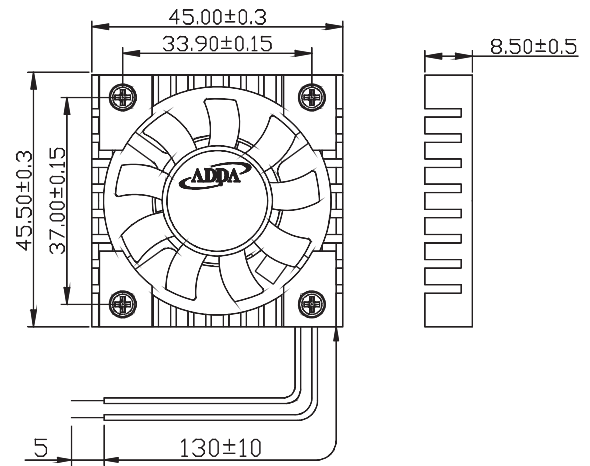
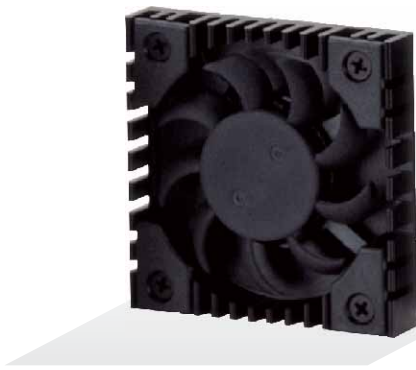
*Safety approvals

				
				✓



AP4508 SERIES

External Dimensions



Frame: Aluminum alloy
 Impeller: Plastic (UL:94V-0)
 Lead wire: UL1571AWG28

Specifications(Nominal)

*Noise is measured at the distance of one (1) meter from the axis of intake.

Bearing type: ○=Ball ※=Sleeve ●=Hypro bearing

Frame size (mm)	Model No.	Bearing System Type	Rated Voltage (VDC)	Current (A)	Power (W)	Rated Speed (rpm)	Maximum AirFlow (CMM)	Maximum AirFlow (CFM)	Maximum Pressure (InAq)	Maximum Pressure (mmAq)	*Noise Level (dB/A)	Weight (g)
45x45x08	AP4505LX-J90	●	5	0.04	0.20	4500	0.120	4.20	0.044	1.12	19.5	18.0
	AP4505MX-J90	●	5	0.07	0.35	5500	0.148	5.20	0.064	1.63	23.8	
	AP4505HX-J90	●	5	0.09	0.45	6200	0.171	6.00	0.090	2.29	30.0	
	AP4512LX-J90	●	12	0.04	0.48	4500	0.120	4.20	0.044	1.12	19.5	
	AP4512MX-J90	●	12	0.05	0.60	5500	0.148	5.20	0.064	1.63	23.8	
	AP4512HX-J90	●	12	0.05	0.60	6200	0.171	6.00	0.090	2.29	30.0	

Specifications subject to change without notice.

The specification for bearing type is for reference only, for more bearing types information, please contact with your ADDA sales representative, thanks!!
 (網頁上呈現產品軸承資訊均以參考為主，若需其他產品資訊請聯絡您在ADDA的業務代表，謝謝!!)

*Motor protective circuit and third lead wire functions

0	1	2	3	4	6	7	8	9	A	B
✓					✓					

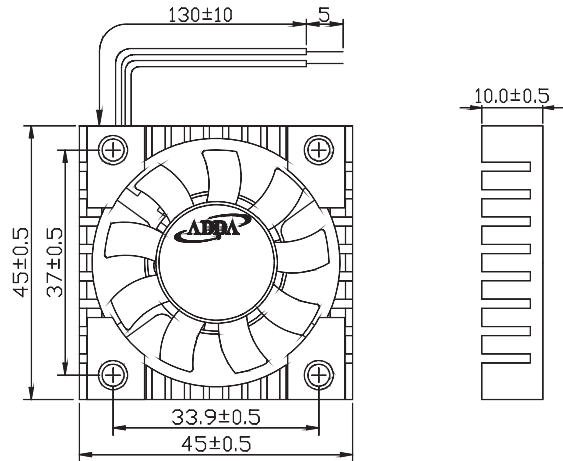
*Safety approvals

✓	✓			✓



AP4510 SERIES

External Dimensions



Frame: Aluminum alloy
 Impeller: Plastic (UL:94V-0)
 Lead wire: UL1571AWG28

Specifications(Nominal)

*:Noise is measured at the distance of one (1) meter from the axis of intake.

Bearing type: ⊙=Ball ⊛=Sleeve ●=Hypro bearing

Frame size (mm)	Model No.	Bearing System Type	Rated Voltage (VDC)	Current (A)	Power (W)	Rated Speed (rpm)	Maximum AirFlow (CMM)	Maximum AirFlow (CFM)	Maximum Pressure (InAq)	Maximum Pressure (mmAq)	*Noise Level (dB/A)	Weight (g)
45x45x10	AP4505LX-G90	●	5	0.05	0.25	4800	0.128	4.50	0.051	1.30	19.9	18.0
	AP4505MX-G90	●	5	0.08	0.40	5800	0.157	5.50	0.067	1.70	25.0	
	AP4505HX-G90	●	5	0.09	0.45	6500	0.171	6.00	0.090	2.29	30.0	
	AP4512LX-G90	●	12	0.04	0.48	4800	0.128	4.50	0.051	1.30	19.9	
	AP4512MX-G90	●	12	0.05	0.60	5800	0.157	5.50	0.067	1.70	25.0	
	AP4512HX-G90	●	12	0.05	0.60	6500	0.171	6.00	0.090	2.29	30.0	

Specifications subject to change without notice.

The specification for bearing type is for reference only, for more bearing types information, please contact with your ADDA sales representative, thanks!!
 (網頁上呈現產品軸承資訊均以參考為主, 若需其他產品資訊請聯絡您在ADDA的業務代表, 謝謝!!)

*Motor protective circuit and third lead wire functions

0	1	2	3	4	6	7	8	9	A	B
✓					✓					

*Safety approvals

✓	✓			✓

Вентилятор ADDA купить в Минске tel. +375447584780
www.fotorele.net www.tiristor.by радиодетали, электронные компоненты
email minsk17@tut.by tel.+375 29 758 47 80 МТС

каталог, описание, технические, характеристики, datasheet, параметры, маркировка, габариты, фото,

QR код

